

**Aim:** To study the artist’s style and technique to help you further explore the use of collage, layout & composition.

**Deadline:** To complete by the benchmark assessment hand in 3.11.20

**Task:** Produce 2x A4 pages, covering the work of HANNAH HOCH

**TASKS:**

**1. RESEARCH**

Research work by artist HANNAH HOCH, include: written research (250 words), biography about Hannah Hoch (+ analysis of her artwork + selection of artworks by Hoch. Print as tracing paper overlay. Attach to page using glue paper clips.

<https://www.pinterest.co.uk/armandcordero/hannah-hoch-%2B/>

<https://www.theartstory.org/artist-hoch-hannah.htm>

<https://www.whitechapelgallery.org/about/press/hannah-hoch/>

<https://www.moma.org/artists/2675>

<https://www.britannica.com/biography/Hannah-Hoch>

**2. A4 sides 1 and 2**

You are ultimately going to produce designs in the style of Hannah Hoch covering the techniques/styles that Hoch uses in her designs. On side 1 and side 2, you are to create 4 small designs and 1 large design = total of 10 collage designs.

Use the following:

- Choose a selection of Hannah Hoch artworks to use as references, save them and use them whilst you create your own designs.
- Plan your designs – search through magazines/newspapers for images to use to create your designs, cut out pieces that you need before sticking down with glue stick e.g. see image on right.
- Intricate and neat cut outs directly from magazines/newspapers (you can also use HQ scanned copies of magazines/newspapers)
- Plan interesting layouts and compositions before you glue images down e.g. see images below



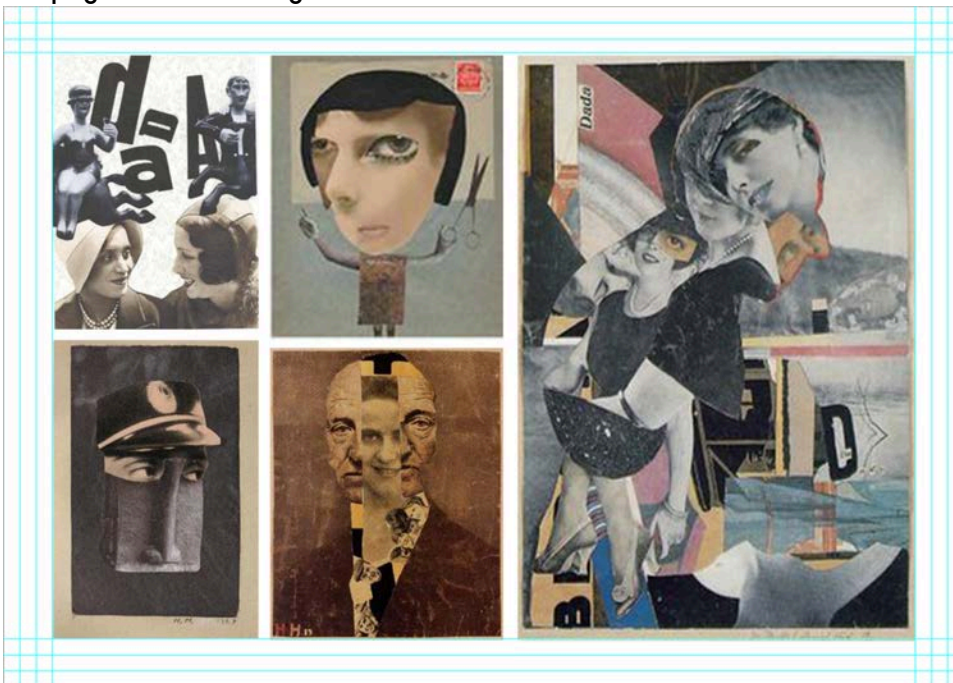
- Layering of collage
- Use a range of different papers for the base of your designs e.g. cream, grey, tea stained, colour papers
- Typography related to 'DADA' movement and/or to you as a designer/illustrator/ animator etc. – cut out different letters from magazines/newspapers
- Try to use interesting colour palettes
- Exploration of small, medium and large images
- Collaging with images to create repeat patterns

**How to approach task 2:**

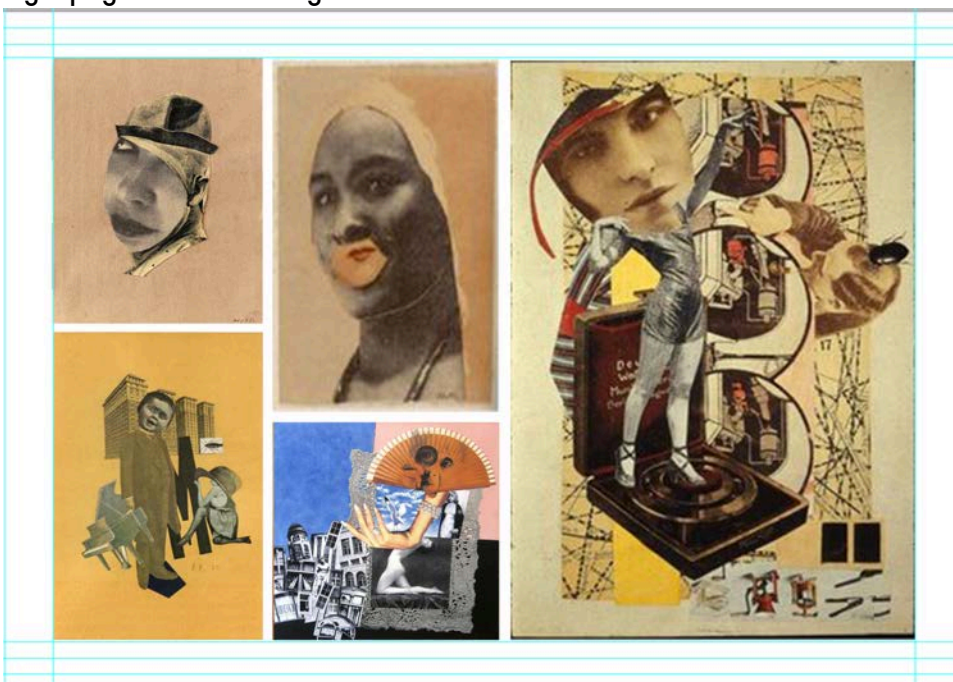
Select your reference to inspire your designs

Choose Hannah Hoch artworks to use as reference for your own designs, arrange them in a document e.g.

**Left page reference images**



**Right page reference images**





Task 2 examples – scan & save both A4 sides of your collage designs. Mount your collages to a double page spread

Left page example



Right page example



### 3. TRANSPARENCY OVERLAY X2

You are to use the photocopier to create colour photocopies of both sides of your Hannah Hoch inspired collages onto sheets of A4 acetate. Please ask technician to help you with this.

#### Presentation

Use paperclips to overlay the colour photocopy of side 1 directly on top of side 2. Use paperclips to overlay the colour photocopy of side 2 directly on top of side 1. Attach task 1 (tracing paper research flap) to side 1 of this homework.



More examples of completed Hannah Hoch homework

