

GRAPHIC DESIGN Henri Matisse

Aim: To study the artist's style and technique to help you explore the use of surface pattern, texture, collage, layout and composition.

3B1 Deadline: 3rd Half Term Week 4 Homework sett on MONDAY 28/1/19. Due lesson MONDAY 4/2/19

Task: Produce 2x A4 pages covering the work of HENRI MATISSE (see examples below). Present the 2 A4 pages of designs on page 24.

TASK 1 RESEARCH

Research the work by artist HENRI MATISSE

<https://www.tate.org.uk/art/artists/henri-matisse-1593> - written research (approx. 250 words), biography about Matisse + analysis of an artwork, ideally the artwork which you are going to create a copy of – *this is to be word processed (size 10pt). Attach as tracing paper flap to top left of page.*

TASK 2 CREATE COPIES

Create copies of paper cutout artworks by Matisse:

- Create 1x handmade off-screen collage copy (13cm x 19cm)
- Create 2x digital copies (both 13cm x19cm) – Adobe Illustrator & Photoshop.

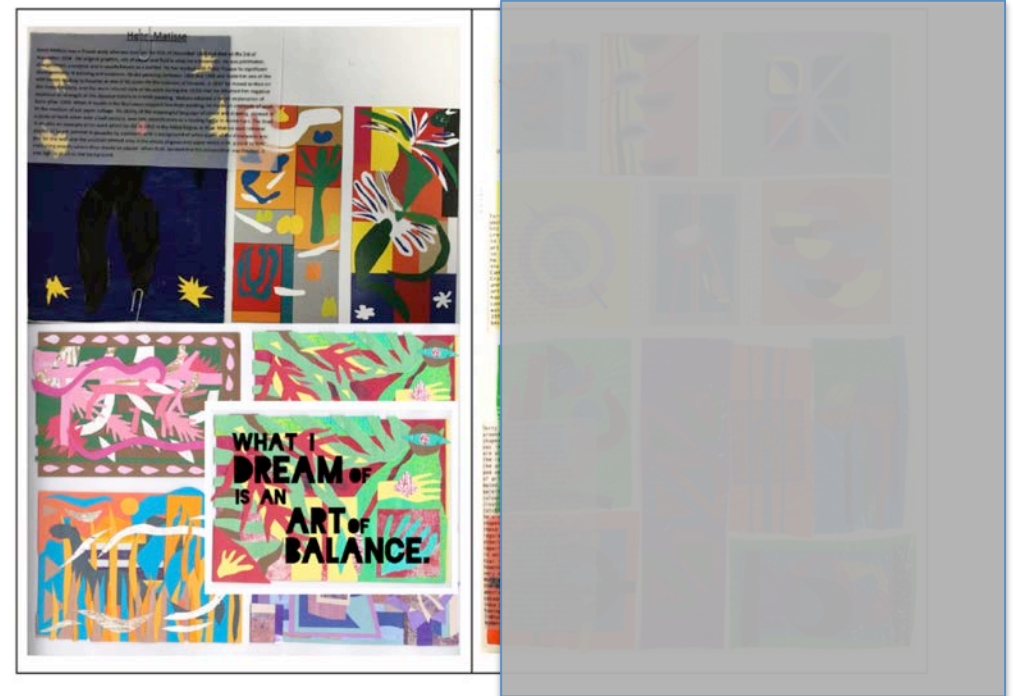
For your copies you must choose artworks from the selection:

<https://online.godalming.ac.uk/mod/folder/view.php?id=61781&forceview=1>

For the handmade collage copy, you are to use a combination of:

- coloured card
- pre-prepared acrylic painted papers.

There is a range of different coloured card/paper + paint in the design dept. Plan your work and select the right colours for your copy.



Page 24
Henri Matisse

Page 25
Terry Frost

TASK 3 CREATE YOUR OWN REFERENCE IMAGES

Take 4 photos of interesting plants (e.g. leaves, potted plants, cacti) – these could be plants either in your home, outdoors or in a garden centre. Print them onto a strip of tracing paper (dimensions approx. 15cm x 6cm) – attach to left page using glue stick or double sided tape.

Example (see right)



TASK 4 'PREP AND PLANNING'

Next, on a separate piece of A6 cartridge paper you are to prep and plan your own designs using 2B or 4B pencil. Create outline drawings of your photos, thinking about layout and composition. You must simplify what you can see in your photos to the utmost – in the style of Henri Matisse. Attach paper to left page using paper clip.

Example (see right) of 'prep and planning' A6 page



Example of task 4:



TASK 5 'ADD TYPOGRAPHY'

Select one of your own collage designs and scan to your email. Download (save target as pdf) and open the scanned file in Adobe Photoshop, edit your design by:

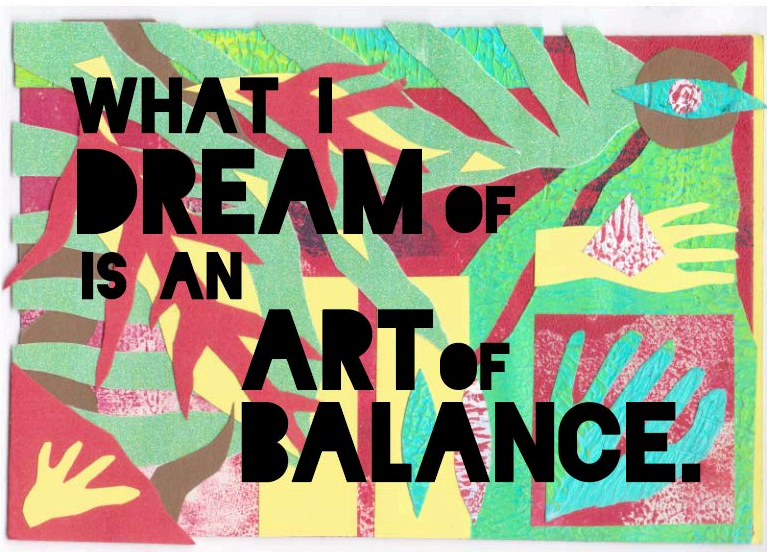
Top Menu Bar > Image > Adjustments > Levels. Copy and Paste your design into Adobe Illustrator.

Use the 'Blackout Midnight' typeface to add typography to your design. The typography must be a short quote of Henri Matisse. His quotes can be found via: https://www.brainyquote.com/authors/henri_matisse / <http://www.henri-matisse.net/quotes.html> / <https://quotes.thefamouspeople.com/henri-matisse-4821.php>

The 'Blackout Midnight' typeface can be downloaded as an Illustrator file via Godalming Online: <https://online.godalming.ac.uk/mod/folder/view.php?id=61781&forceview=1>

Print onto tracing paper (dimensions of design approx. 13cm x 9cm) trim to size and attach to page 9 as a flap using paper clip.

Example of task 5 and Blackout Midnight typeface:



BLACKOUT MIDNIGHT TYPEFACE

A	B	C	D	E	F
G	H	I	J	K	L
M	N	O	P	Q	R
S	T	U	V	W	X
Y	Z	0	1	2	3
4	5	6	7	8	9

Example of completed homework presented on A3 page

Henri Matisse
Matisse was a French artist born in 1869 who was part of the fauvism, modernism and post-impressionist movements of the early 20th century. He was a print maker, sculptor and painter. He is known for his distinctive style including his dimensional flattened forms and decorative patterns. The colour palette he worked from included mostly bright primary colours. Many of his greatest works were made in the decade following 1945 when he was living in Paris, so that was when his style was fully realized. In 1917 he relocated to Nice on the French Riviera and began to work in a more relaxed style similar to the tradition in French painting. After 1930 however, he worked with more simplified forms. His old age he still produced pieces however developed techniques of paper cutting and collage due to his ill health resulting from rheumatoid arthritis. Matisse died in 1954 at the age of 84.

Personally, I admire Matisse's work, I feel he was an all-round creative developing skills in many different mediums at the same time in being the way into a modern way of creating art. Although I do like the experimental and surprising colours used in Matisse's painting, I don't particularly enjoy the actual subject matter. However, I do like his colour palette work. This was unique at the time however was the beginning of new types of work and showed people that even the simplest can be beautiful.

"There are always flowers for those who want to see them" - Henri Matisse

Using coloured card and some prepared backgrounds of acrylic paint I made collages in the style of Matisse using colourful shapes. The main shapes were based off the shapes of leaves from photos I took. I did these other studies on Illustrator using tracing tools and the colour dropper tool.

The Eskimo 1947

Pierrots funeral 1947

THERE ARE ALWAYS FLOWERS FOR THOSE WHO WANT TO SEE THEM