

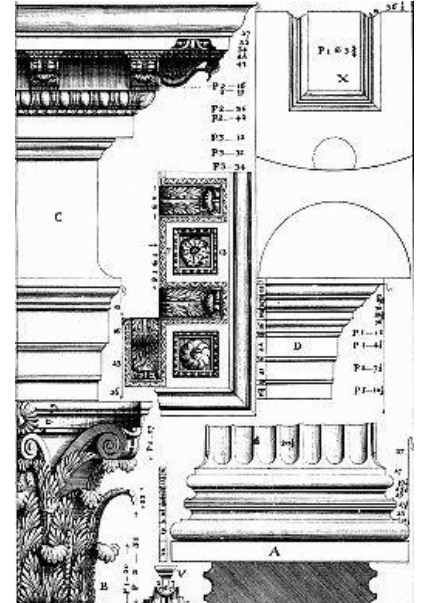
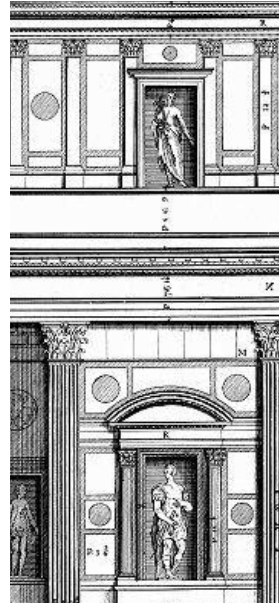
James M. Smith, AIA, LEED AP

E: firstname.lastname@email.com

T: 555.458.6584

Pantheon *Temple with the world's largest unreinforced concrete dome (142')*
Rome, Italy

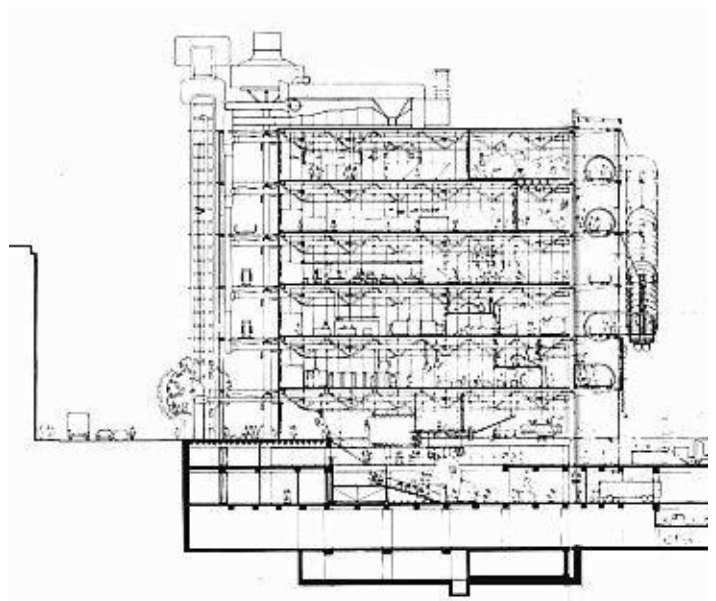
Apollodorus Architects



- + Programmed spaces by type and area based on functional requirements and the client's criteria
- + Determined building envelope configuration and public access routes to comply with planning guidelines

Centre Pompidou *1.1 million sq. ft., \$600 million museum and library*
Paris, France

Rogers and Piano



- + Managed consultants to develop efficient structural and mechanical systems within fixed budget
- + Presented multiple conceptual design iterations incorporating consultant, planning and client input

For more helpful resources on architecture applications, interviews and more, visit [The Architect's Guide Store](https://www.thearchitectsguide.com).

James M. Smith, AIA, LEED AP

E: firstname.lastname@email.com

T: 555.458.6584

Salk Institute 300,000 sq. ft., non-profit, scientific research institute
La Jolla, California

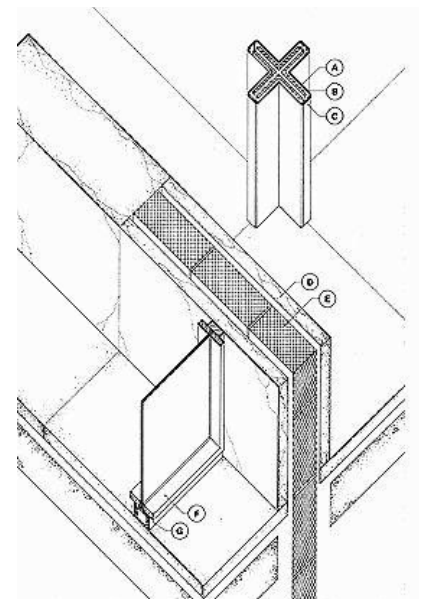
Kahn Architects



- + Reviewed contractor's proposals for material and product substitutions to determine design suitability
- + Evaluated construction documents, reviewed bids and specifications for accurate implementation on site

Barcelona Pavilion German Pavilion for the International Exposition
Barcelona, Spain

Mies Architects



- + Detailed standardized fabrication methods to ensure project stayed within constrained budget requirements
- + Coordinated technical detail drawings, allowing initial concrete pour to occur a month ahead of schedule

For more helpful resources on architecture applications, interviews and more, visit [The Architect's Guide Store](#).