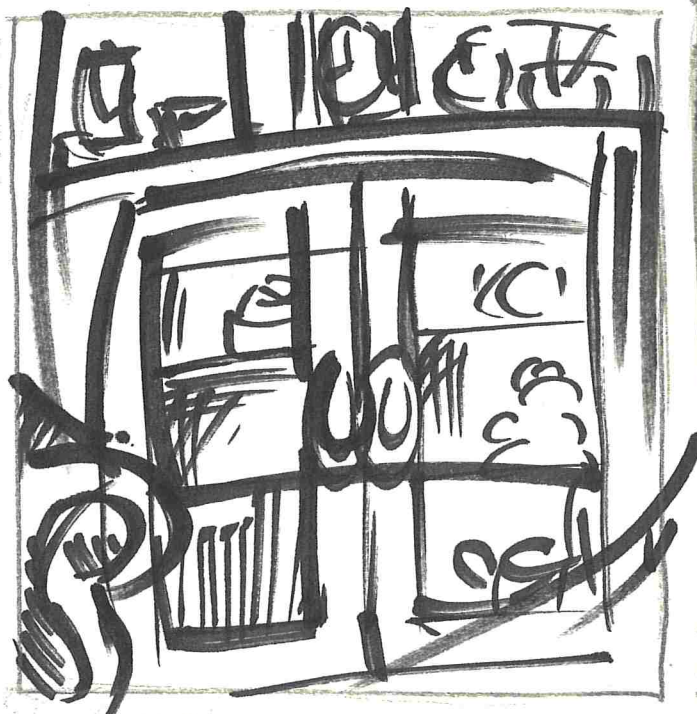
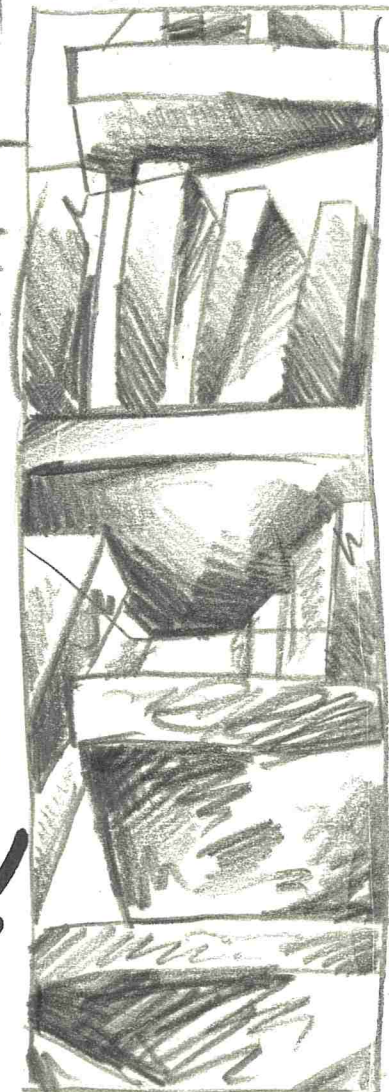
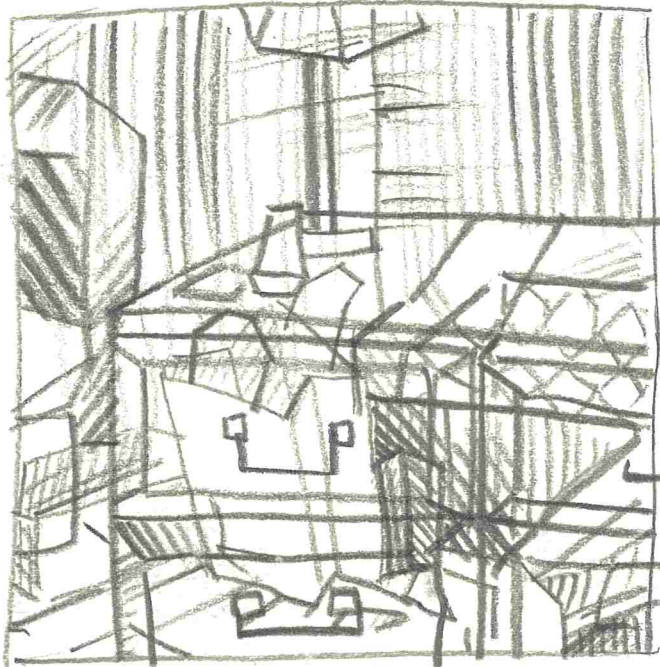
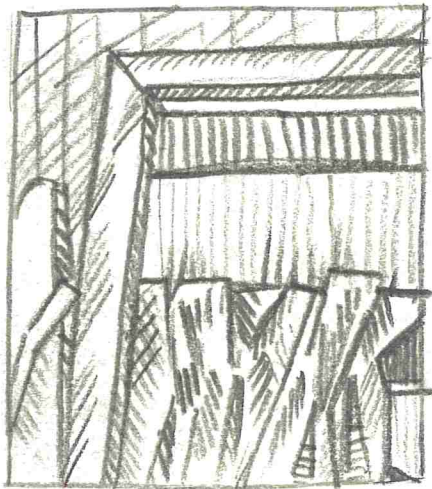
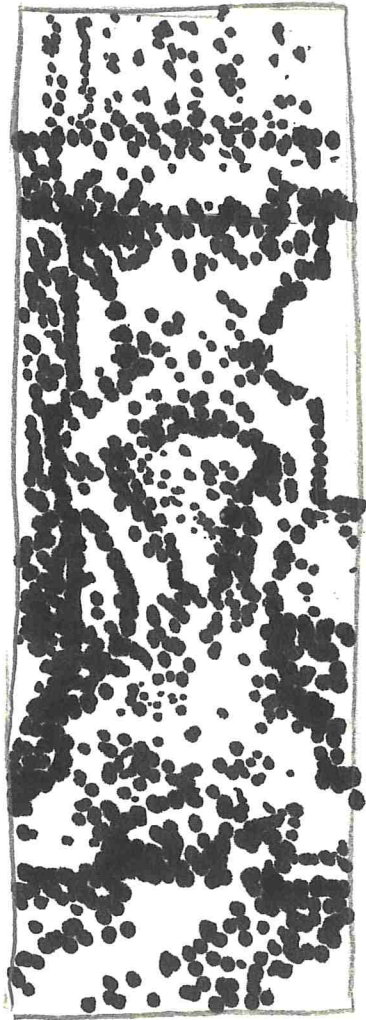
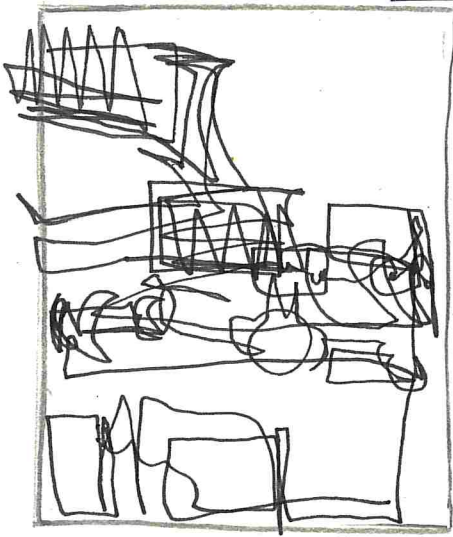
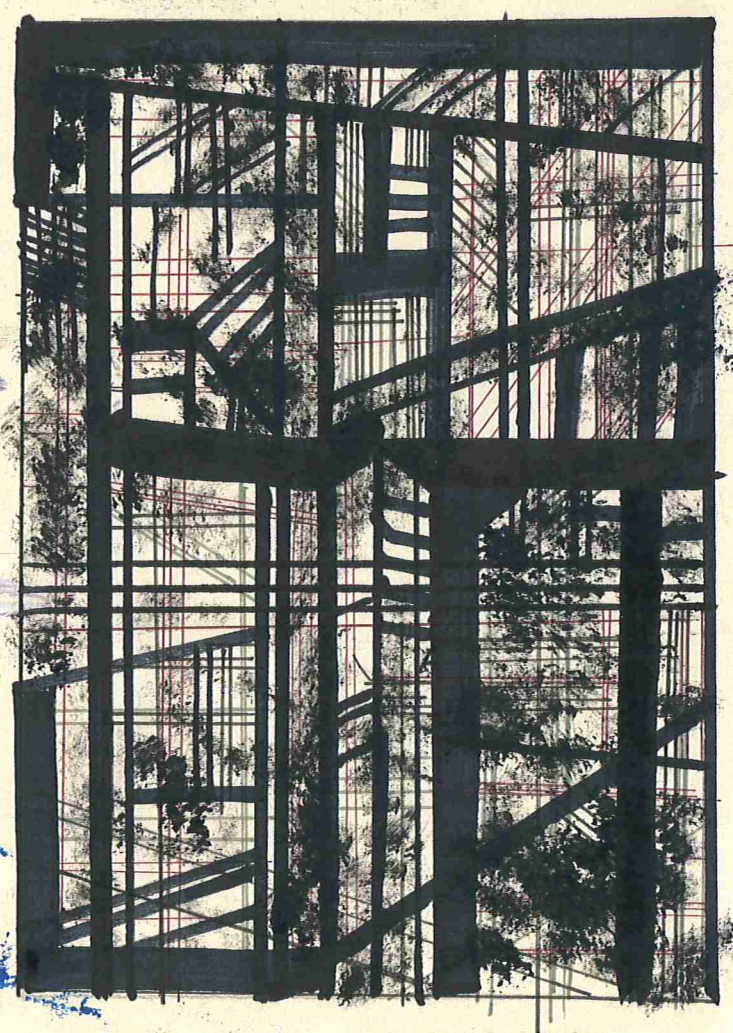
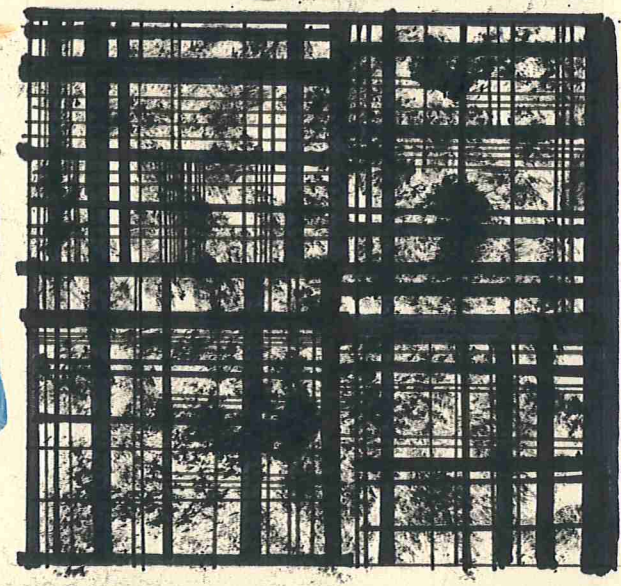
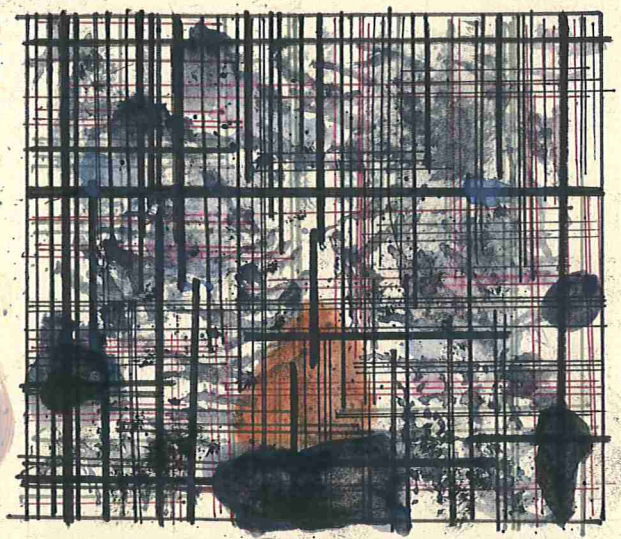
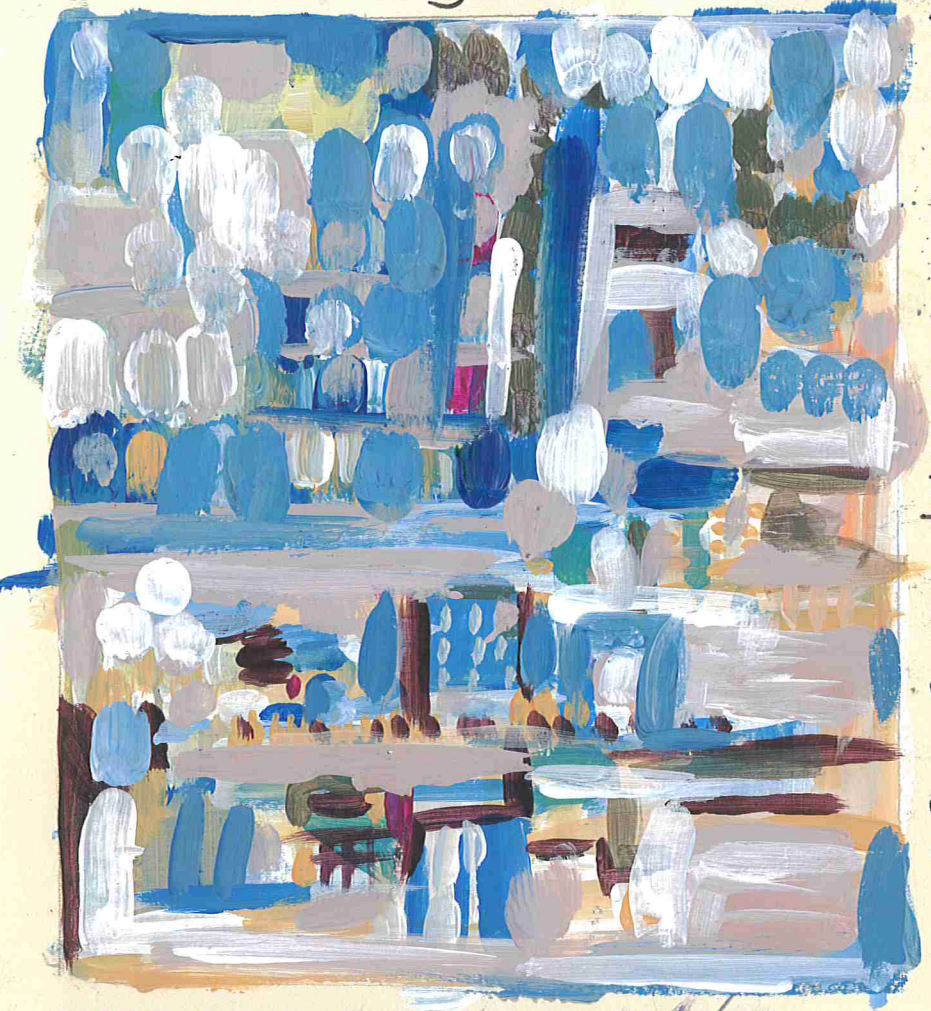


Views around the room



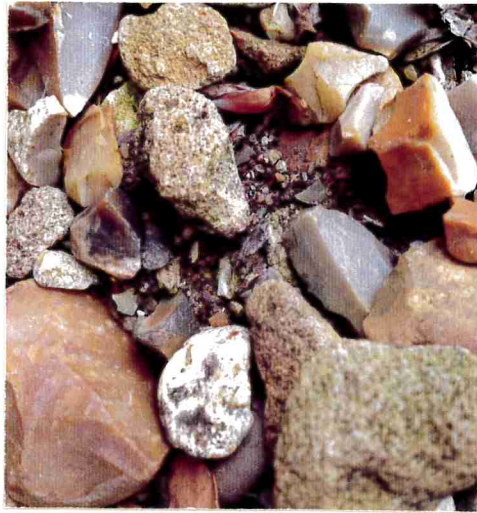
Moving into abstraction



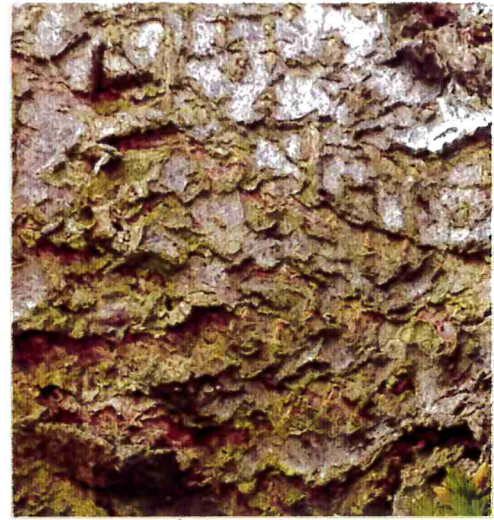
Texture Photographs



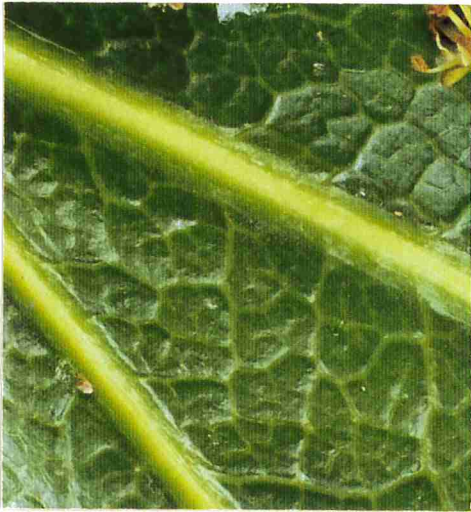
Wooden bench ↗



stones ↗



Bank ↗



leaf ↗



close-up of a rock ↗



Leather suitcase ↗



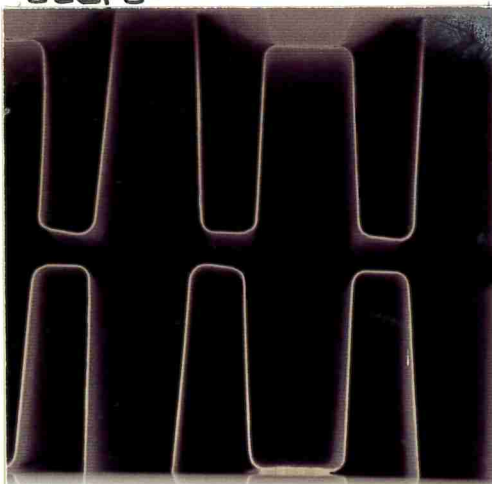
steps ↗



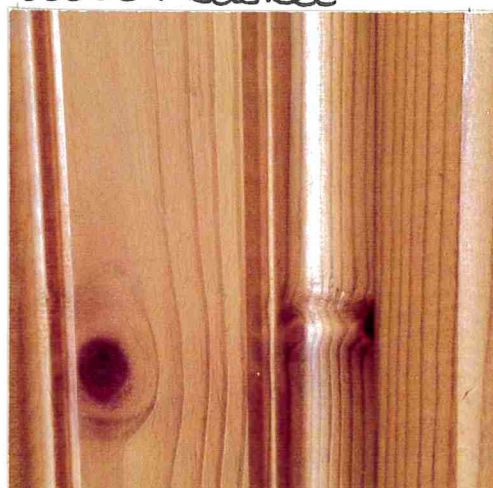
woven basket ↗



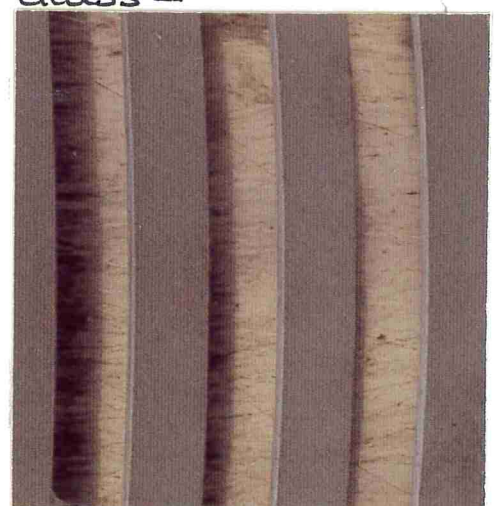
glass ↗



inside of a radiator ↗

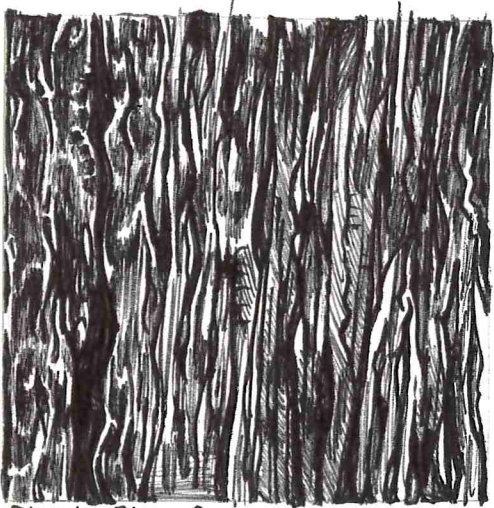


carved wood ↗

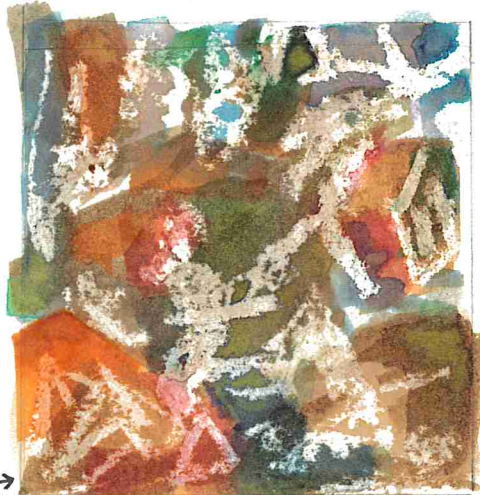


close-up of a bin ↗

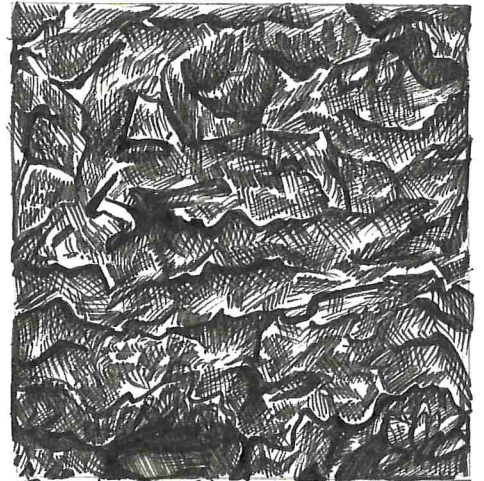
Texture Photo studies



Black Biro ↗



Wax resist + coloured inks ↗



Black fineliner ↗



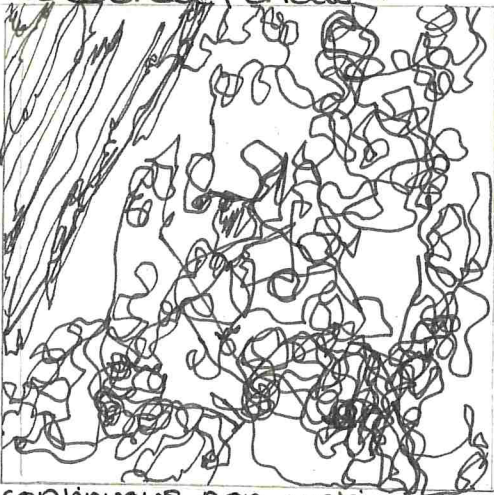
coloured Pencils ↗



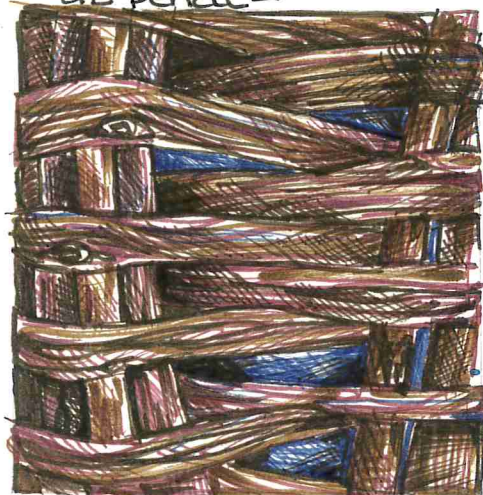
4B pencil ↗



Torn paper collage ↗



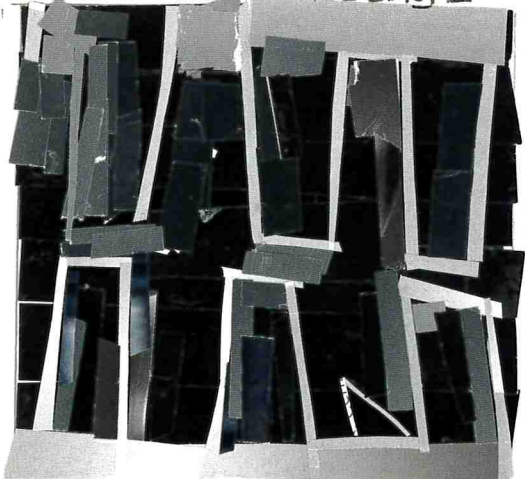
continuous, non-looking ↗



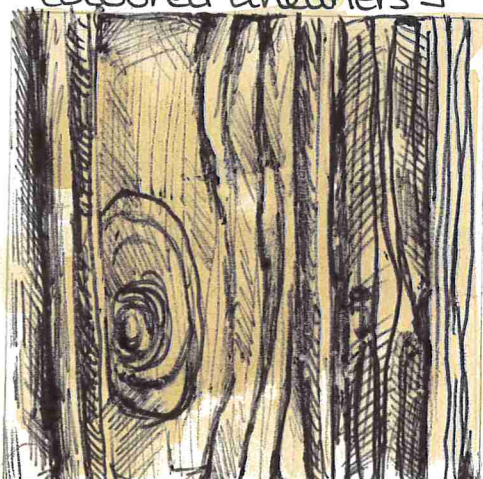
coloured fineliners ↗



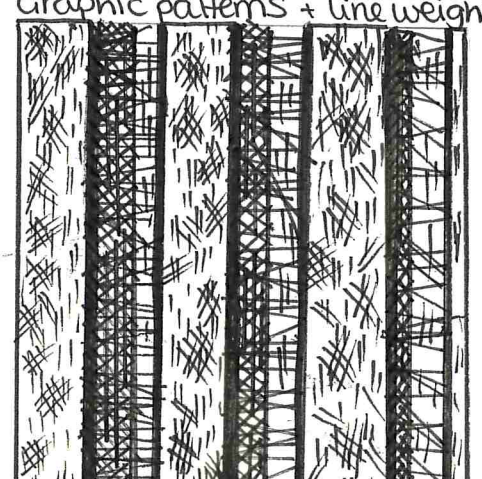
Graphic patterns + line weights ↗



Cut Paper collage ↗

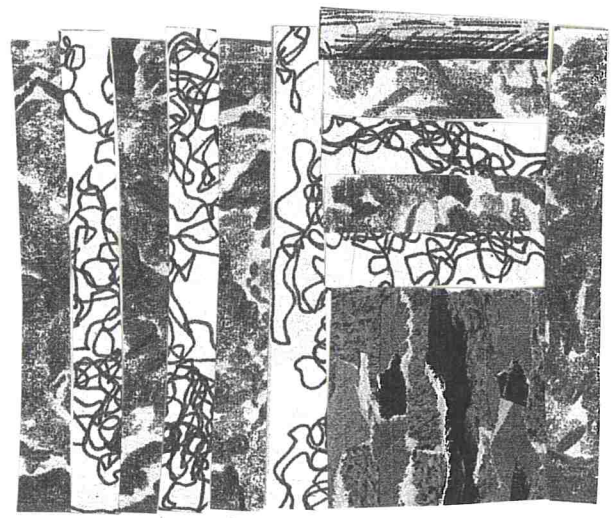
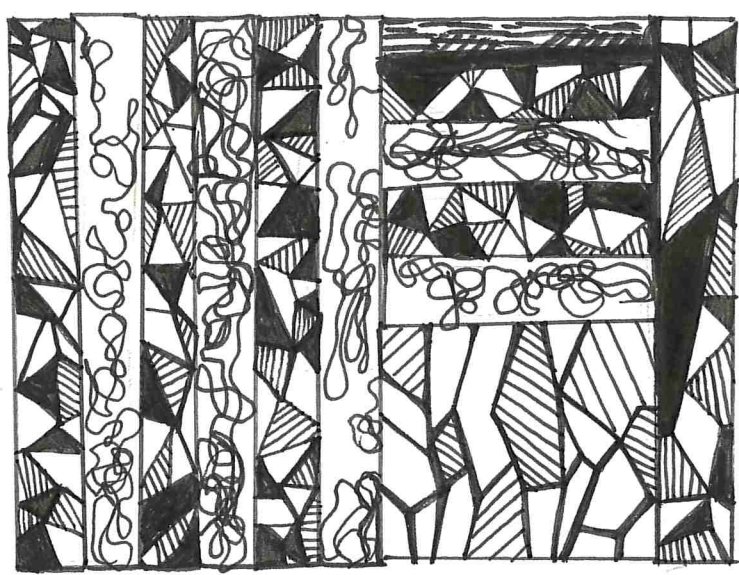
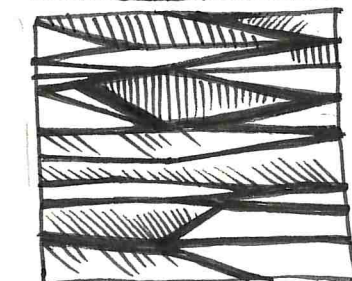
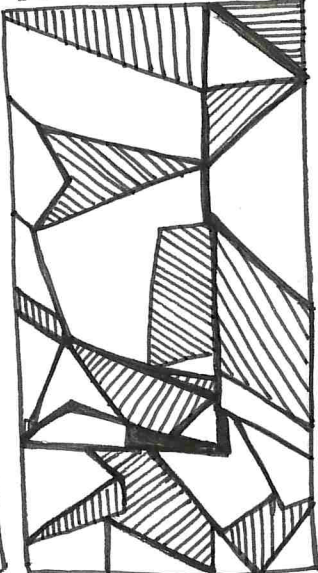
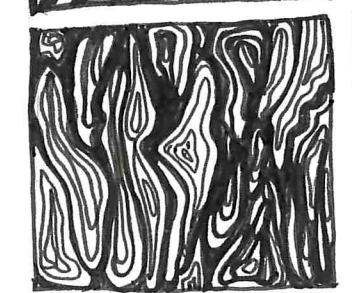
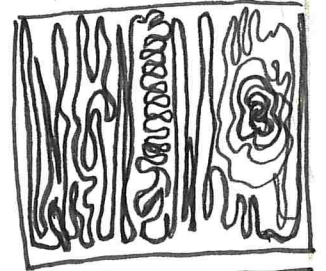
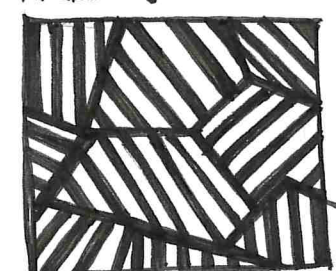
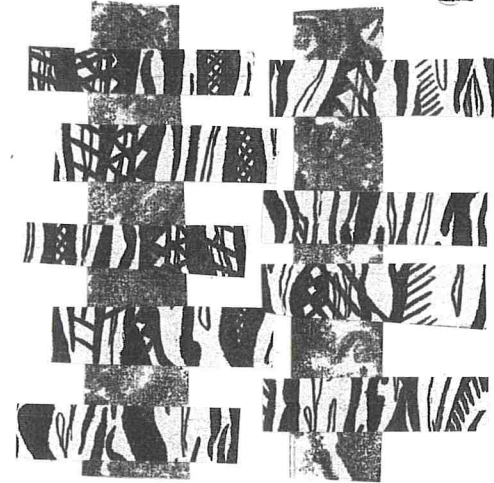
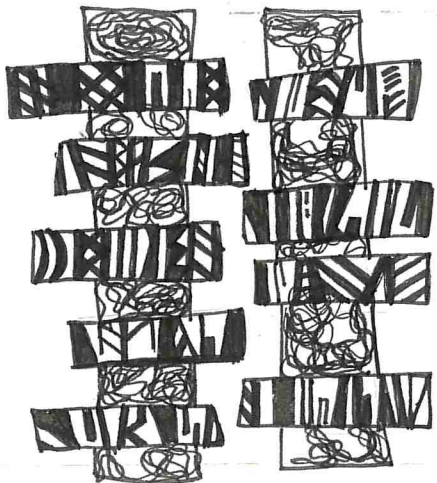
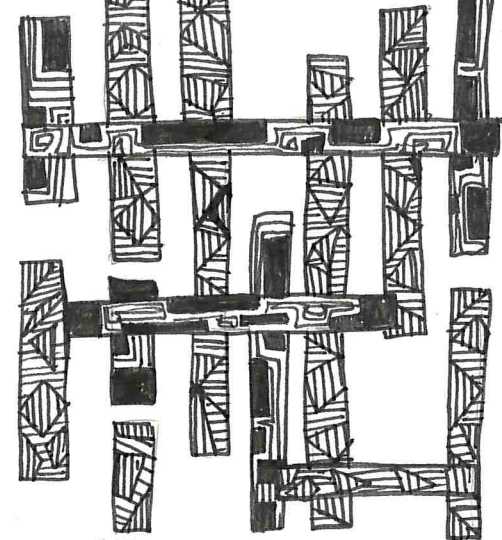
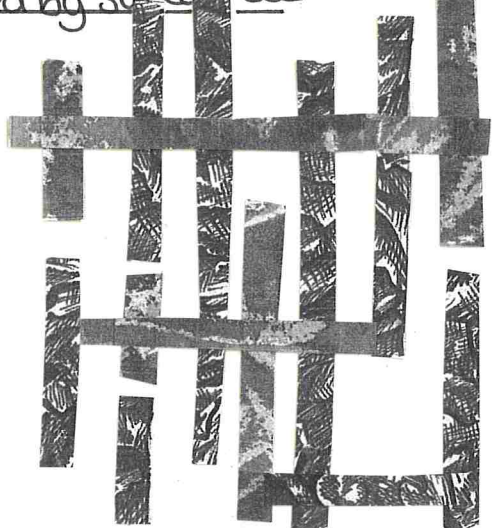
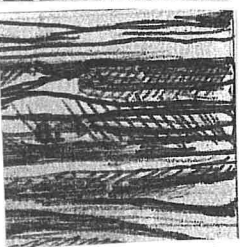
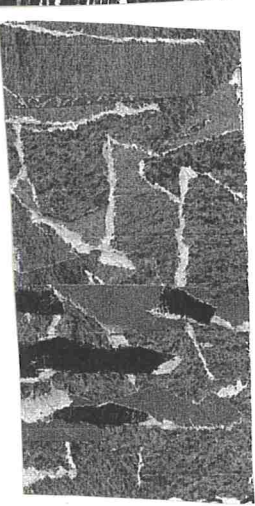
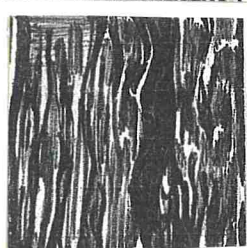
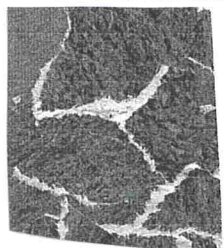


Tea stain and Black Biro ↗



Straight line only ↗

collages + studies inspired by Sol LeWitt



Collages + Studies inspired by sean scully

