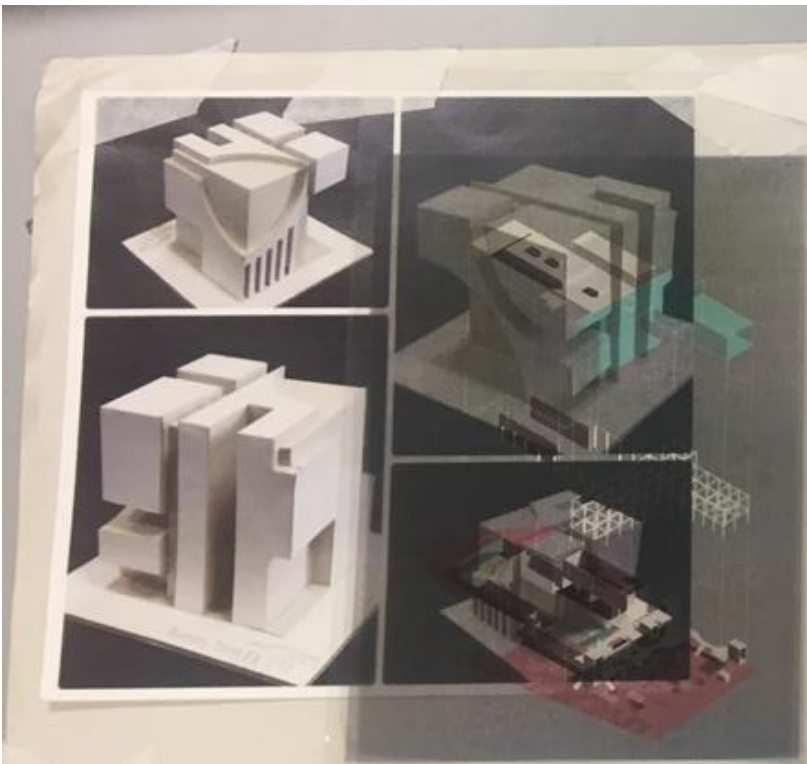


BAF Presentation & Personal study further research



MODEL PHOTOS + CAD



PERSONAL STUDY RESEARCH #12

1+2

Altelier FCJZ & Yung Ho Chang



- Led by architect Yung Ho Chang collaborated with Oroni
- Fascinated by the tradition of the revolutionary technology and prized heritage which is best plywood
- "The strength, balance and flexibility of the final products bring to mind the postures of yogi" it reflects the emphasis on the craft of making rather than a fixed style
- Each piece in the series is made from one single piece of plywood without any connection joinery
- Giving each piece a slight springiness
- Some pieces reflect some traditional Chinese furniture e.g. "Tiao Ji" while others echo European typologies like sofas and lounge chairs
- "we believe that the notion of a uniform set of furniture contradicts our multifaceted lifestyle"

I like the redesign of the traditional table and stool design, taking the legs and bending them inwards instead of them being vertically down set it still maintains a simple and modern aesthetic with a durability factor as there are no parts that can break off



X bench



Y stool



Double V coffee table



Yak table

I like use of the double V's to support the coffee table as it provides a futuristic looking aesthetic whilst providing a multifunctionality of storage. I also like the contrast between the flat surface and the sharp angles of the Vs.

I like the simplicity of the design, how it is one piece of laminated wood so therefore it creates an image of fluidity. However, I dislike the shallowness of the curves on the corners if it not aesthetically pleasing in my opinion.

INITIAL RESEARCH PRESENTED FROM PERSONAL STUDY HW

REFERENCE ARCHITECTURE PRODUCT + FURNITURE

MUST !!! INFLUENCE DESIGN

FORM
SCALE
BALANCE
DETAILS
MATERIAL
TEXTURE

BARBER AND OSGERBY



- Founded studio in 1996
- First worked with nylon in 1996
- Work with curves to recreate and re-model traditional shapes to products and furniture.
- Have worked with designers such as the London Olympic committee to redesign the shape of a torch completely

- Was designed to produce a children's piece of furniture from a single bit of plywood
- Was CNC routed - to ensure accuracy of interlocking
- Shape allows multiple uses - natural shape set stool or inverted form to make a rocking stool
- Open volume at centre - light weight

I like how the stool is lightweight, it allows it to be easily moved by the user and the parents of the child. Furthermore, the simplicity of the use of a single shape in its design is aesthetically pleasing and will provide a fresh and clean image that contrasts among the bright colours that a child's room traditionally has. Finally as it is made of plywood the stool would be affordable to most price ranges.

- Break away from traditional dining tables which are pivoted on central support
- Uses completely curved edges - rounded shapes
- Made from ESG 18/10/14C

I like the futuristic look of this table as it has redesigned the original dining tables which are usually supported by the use of one singular pivot with 4 feet which bars the weight; however, this table is supported by 10 offset panels providing the table with a modernistic look. The price of the table, however, makes the table inaccessible for the majority of customers.

- Outer shell is made out of one piece of laminated oak, walnut or birch
- Multifunctionality due to the several shelves

I like the simplicity of the shelf as it is made from two singular pieces of laminated wood sheets and a solid piece of wooden veneer which provides a simple and clean aesthetic which is pleasing to the eye. Due to the multi compartments to the shelf which will allow the user to store many items within the shelf. However, the price of the shelf is a bit expensive for the non specialist customer so therefore it isn't accessible to all.

- Outer shell is made out of one piece of laminated oak, walnut or birch
- Multifunctionality provided by the surface and compartments
- Simplicity of the table - the legs run down from the compartments

I like the simplicity of the table - the legs have the same lines from the compartments are running down into them. There is further aesthetically pleasing aspect of the look being one piece of wood which helps provide towards the simplicity. As the table is user friendly due to the curved



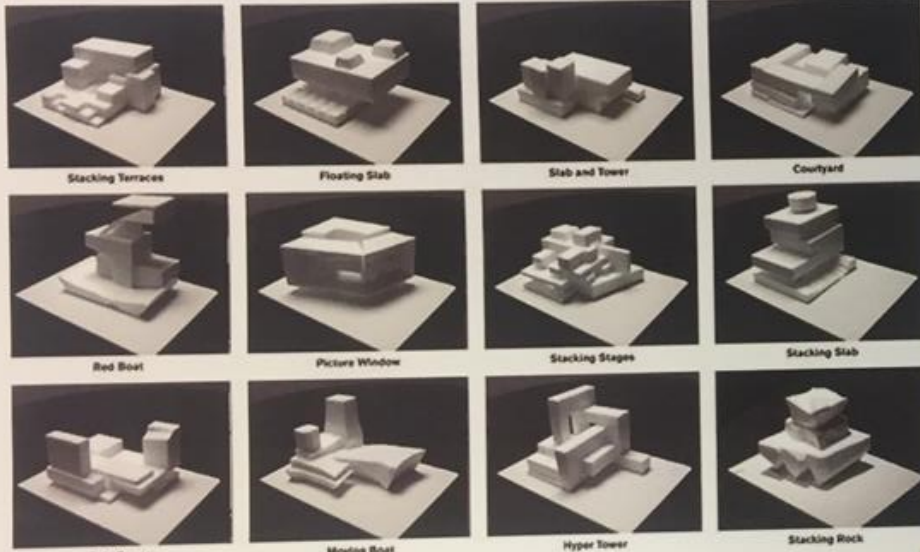
BAF MODEL PRESENTATION #2

Design Brief, Specification Site plan (Context) & transition models and sketches



Development of 4 ideas- models, cad sketches

USING MODELS TO GENERATE IDEAS
REFERENCE RESEARCH, PICTURES...???

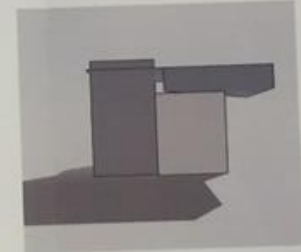
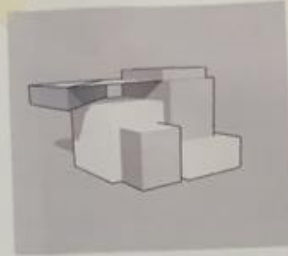


ISOMETRIC HIW



ISOMETRIC
DRAWINGS
FROM 4 MODELS.

INITIAL INVE

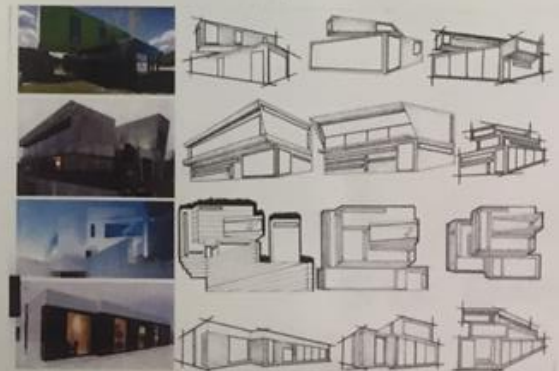


CAD
FROM MSP @



ELEVATION
SPINENT
CORAL ILLUSTRATOR
Special Idioms

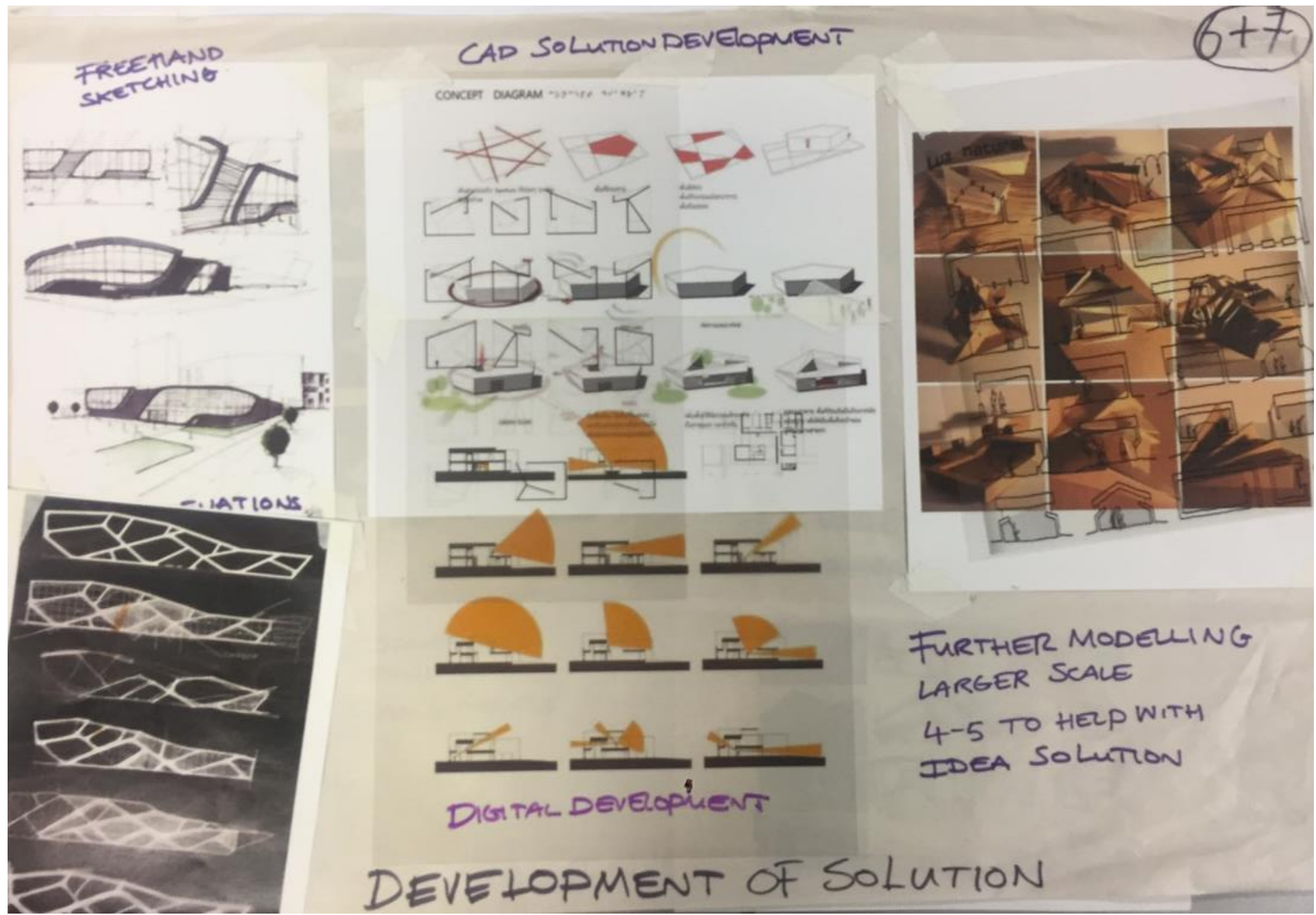
IDEAS HIW



(5+6)

SS HAND

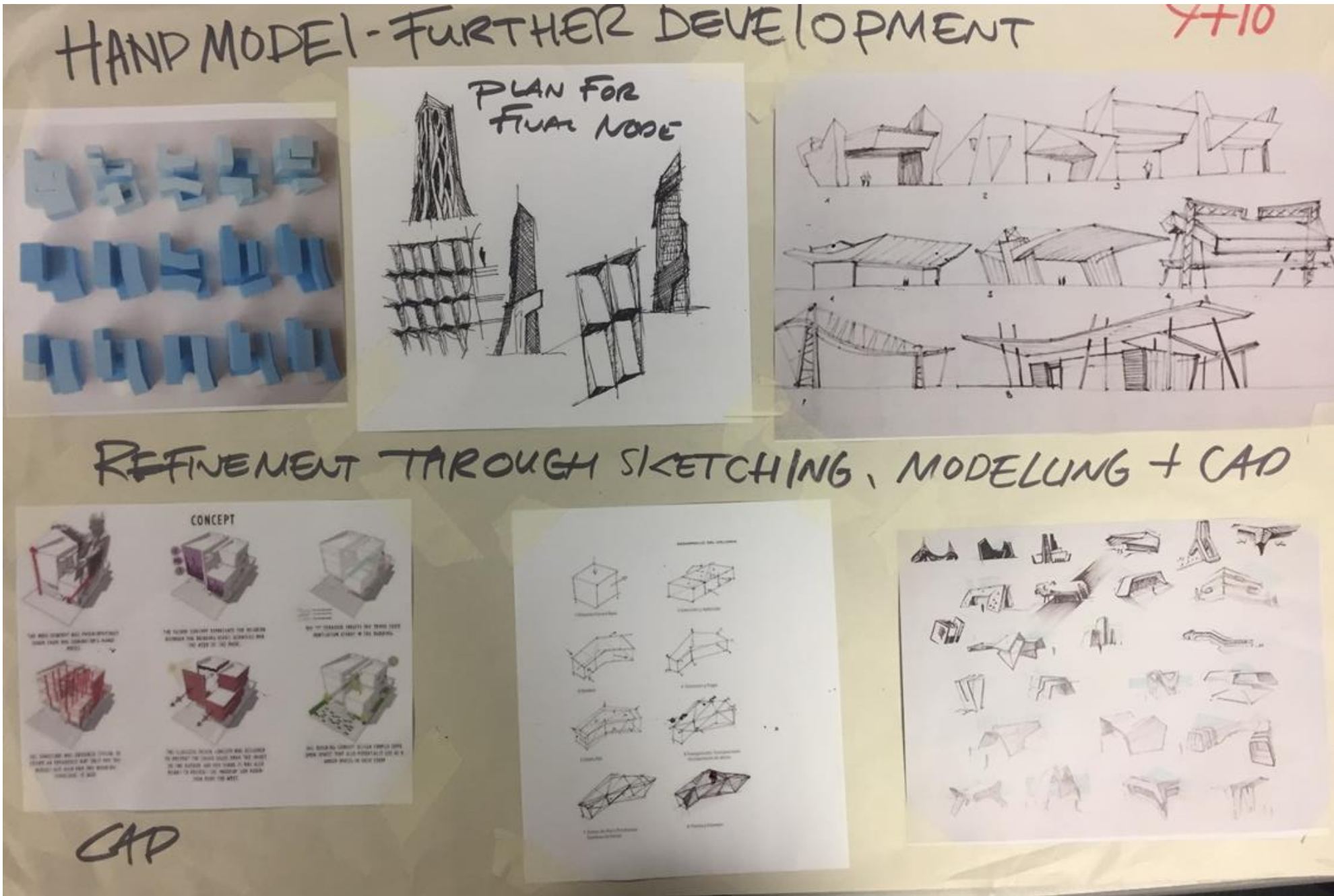
Analysis of ideas and development of final solution



Mark 2 plan and documentation of model

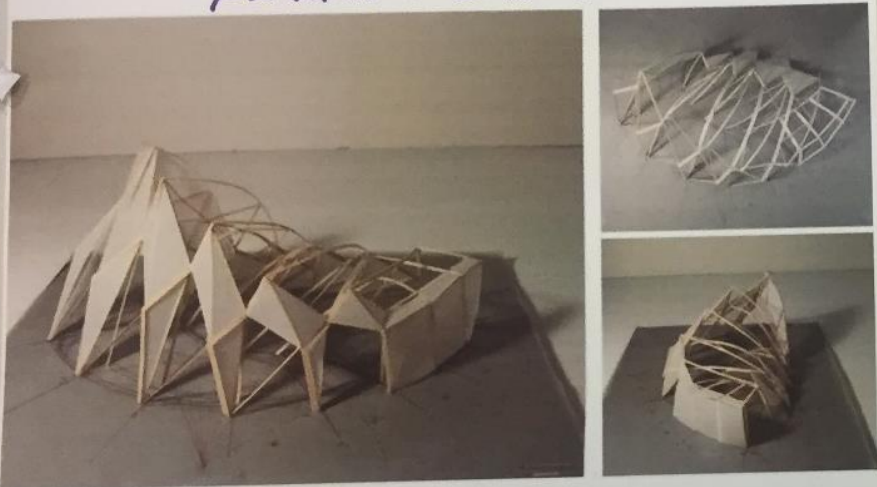


Mark 2 Model development For final model

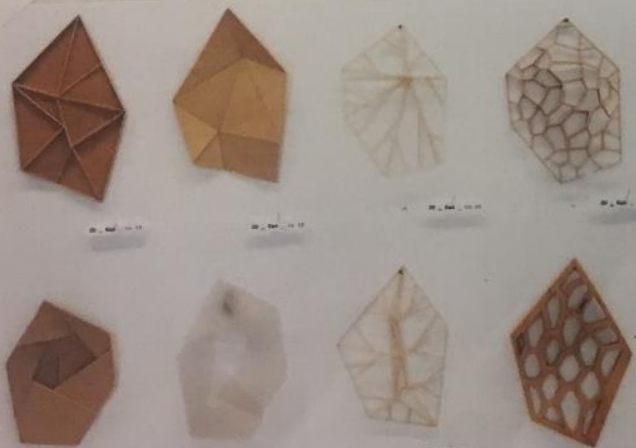


Making of final model, techniques, processes and problems

CONSTRUCTION FINAL MODEL
PLANNING-CONTEXT



TEXTING FIXTURES, FITTINGS,
MATERIALS SCALE



(10+11)
ENVIRONMENT
ISSUES-
SCALE: ?
PEOPLE ?
LIGHT ?
MOVEMENT!

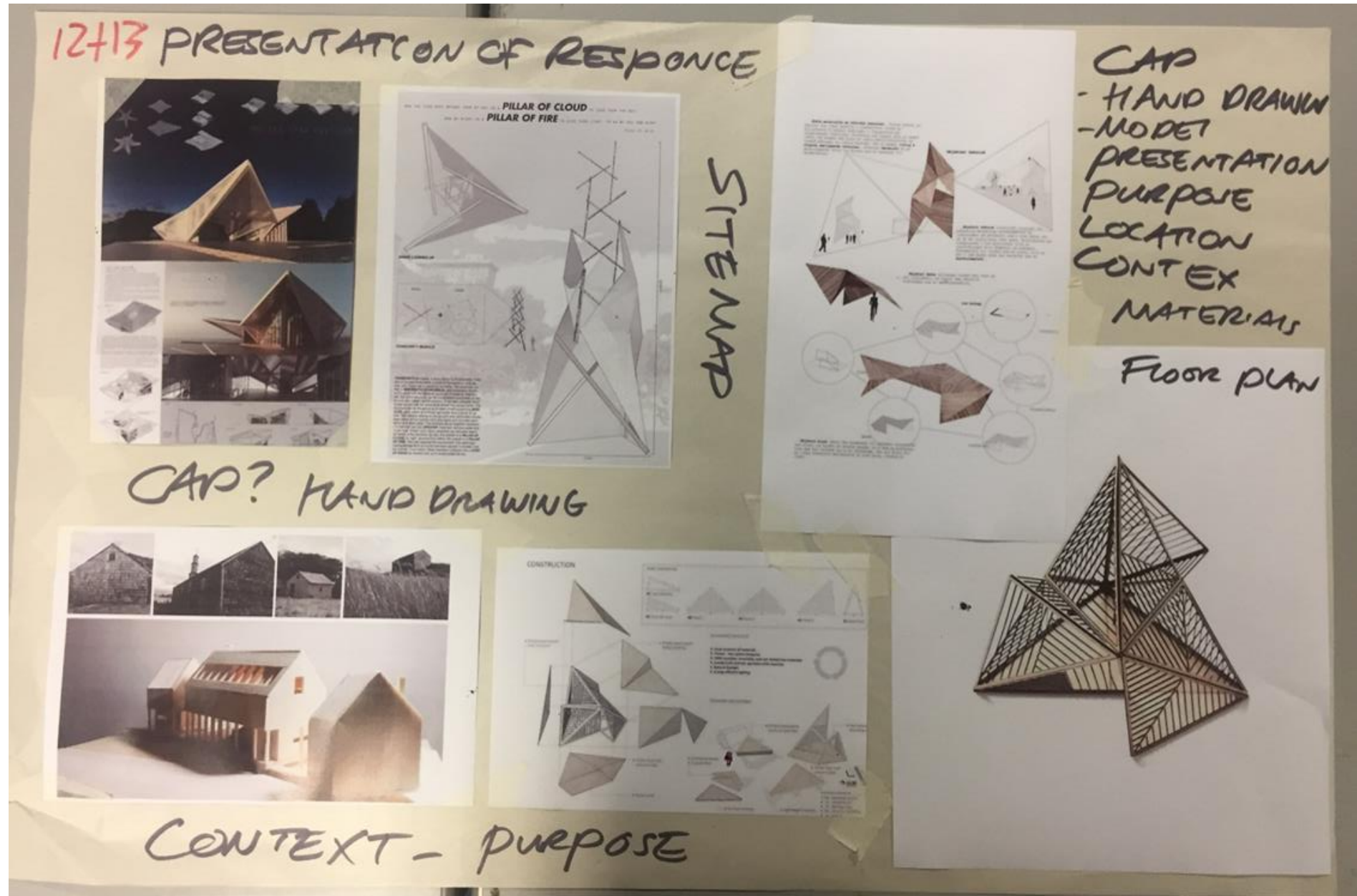


MARK 3 FINAL MODEL MATERIALS



PROBLEMS +
CHANGES... ?

Final presentation of response (Model) Purpose, location, context



Personal study overview.
Making links to Brutalist,
Angular, Fluid and further PS
reserach

LINKS..?

