



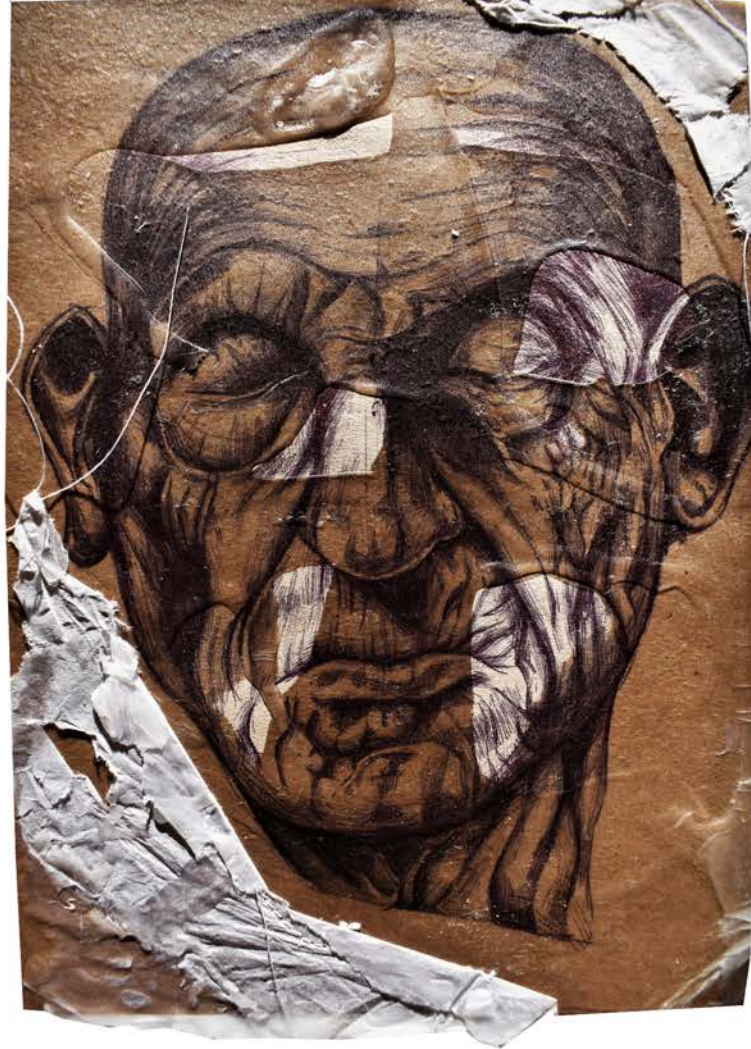
'The Commute' Final piece
old train tickets, paint, stitching



'Eyeball' final piece
wire, tissue paper, molten wax, wasps



Studies into the topic of Death
wax, tissue paper, canvas, acrylic paint,
stitching, biro, collages



Further studies into the topic of Death and using wax in portraits
biro, newspaper, molten wax, tissue paper, stitching



Bog Body Head Drawing
Biro, handmade paper, wrapping paper



Exploration into portraiture
canvas, acrylic paint, ink, biro, stitching



Portraitue inspired by the work of Elly Smalwood
Accrylic paint, black biro, fineliners



Pieces exploring portraiture
biro, stitching, collage, molten wax



Linocut prints
printing ink, tissue paper



Studies of garden tools
Graphite stick, calico, tea stain, ink



Natural Forms drypoint prints
printing ink, a variety of different papers



Studies of natural forms
 blind drawings, ink, bleach, monotyping, calico,
 collages, teastain, wax paper, white paint



A series of studies of circuit boards
fineliners, monotyping, collaging, ink, acrylic paint,
coloured pencils, multi-layered glue collages



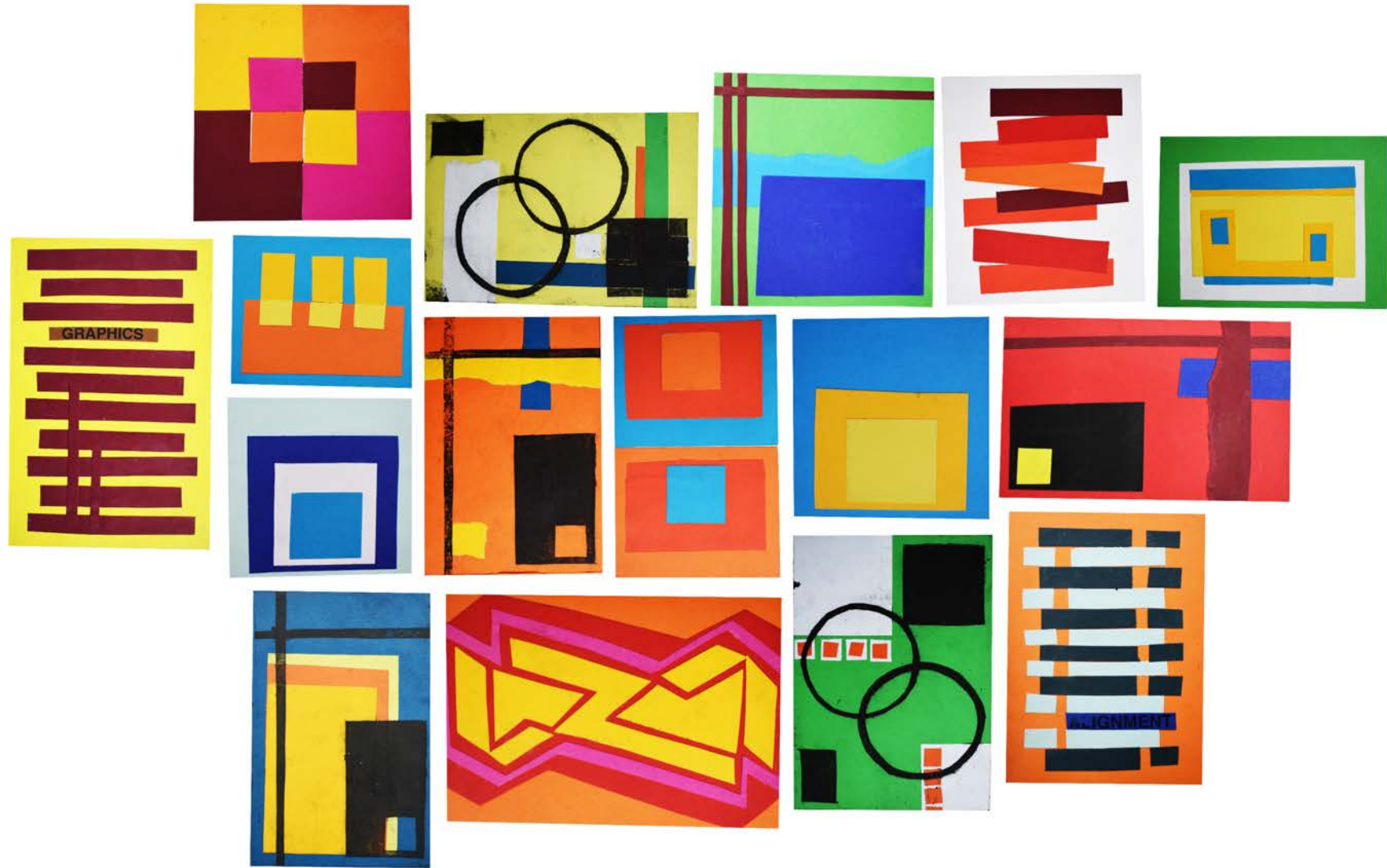
Fineliner Studies of textures and landscapes
fineliners, collages using paper, thread and netting



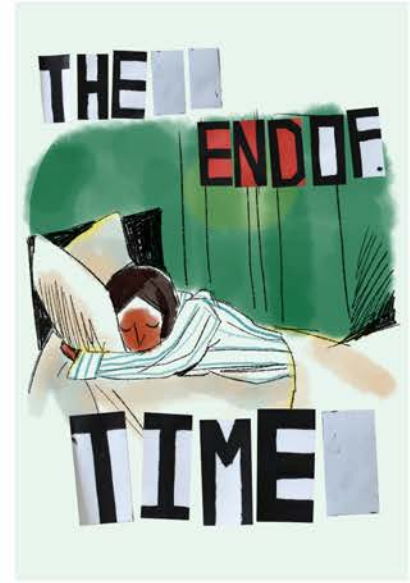
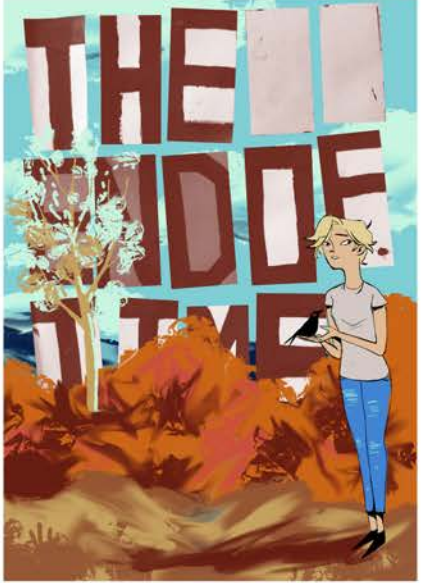
Exploration into typography
paint, felt pens, adobe photoshop



Designs inspired by the Constructivist Movement
coloured paper, tape, Adobe Illustrator







Promotional posters for the webcomic 'The End of Time' using Adobe Photoshop and Clip Studio Paint

