

Data trends, extrapolation and correlation

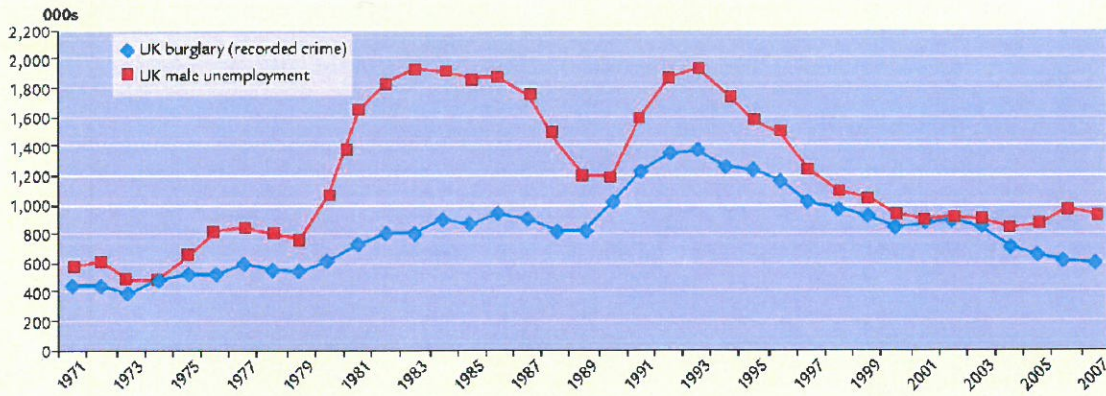


Figure 1 Burglary and unemployment — correlation or coincidence?

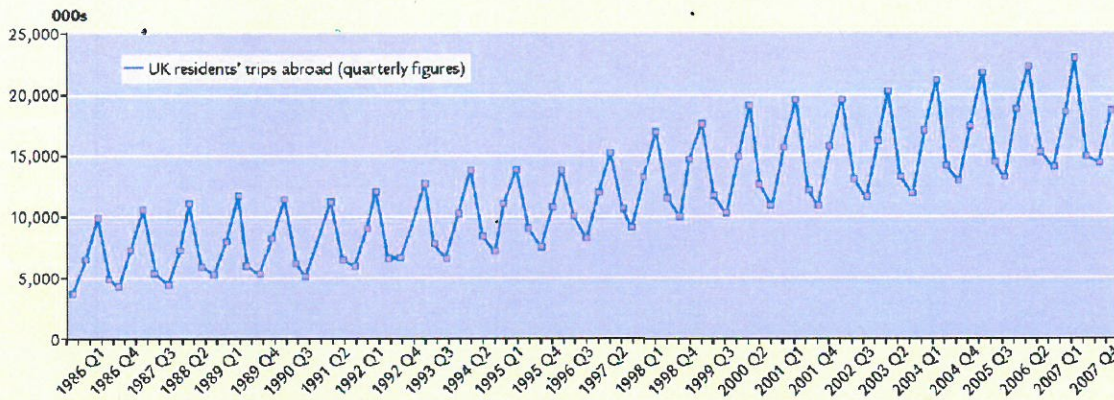


Figure 2 Travel overseas — trends and seasonality

Discussion points

- (1) In Figure 1, how close does the correlation seem to be between male unemployment and burglaries?
- (2) Correlation is not a proof of cause, but what logical reasons might link burglary to unemployment?
- (3) In Figure 2, how could the 1986–2008 trend in trips abroad be described with the greatest accuracy?
- (4) If you ran British Airways, what conclusions would you draw from Figure 2?

Forthcoming in Volume 15, Number 4, April 2009

Regular columns

External Influences
Finance
Marketing
Operations Management
People
Upgrades

Regular authors

Stephen Barnes
Helen Coupland-Smith
Andrew Gillespie
Geoffrey Stanford
Malcolm Surridge
Lisa Walkley