

## A-level GEOGRAPHY

Paper 1 Physical Geography

---

### Insert

This insert contains:

- Figure 1 for use with Question 1
- Figure 2 for use with Question 1
- Figures 3a and 3b for use with Question 2
- Figures 5a and 5b for use with Question 3
- Figures 7a and 7b for use with Question 4
- Figure 9 for use with Question 5
- Figures 10a, 10b and 10c for use with Question 5
- Figures 11a and 11b for use with Question 6
- Figure 12 for use with Question 6.

Figure 1

Changes in the terrestrial water system in response to human activity and climate change between 2012 and 2016

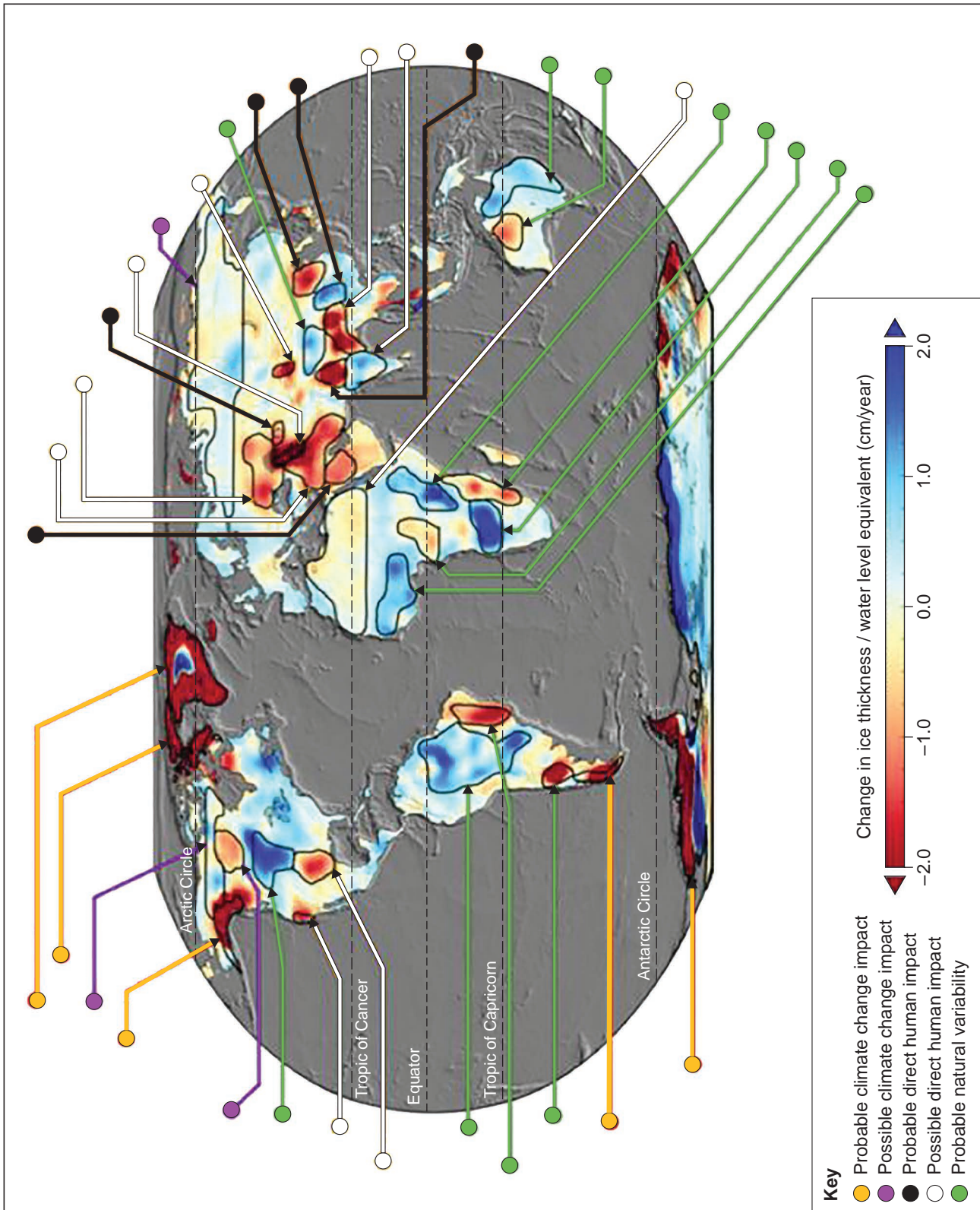
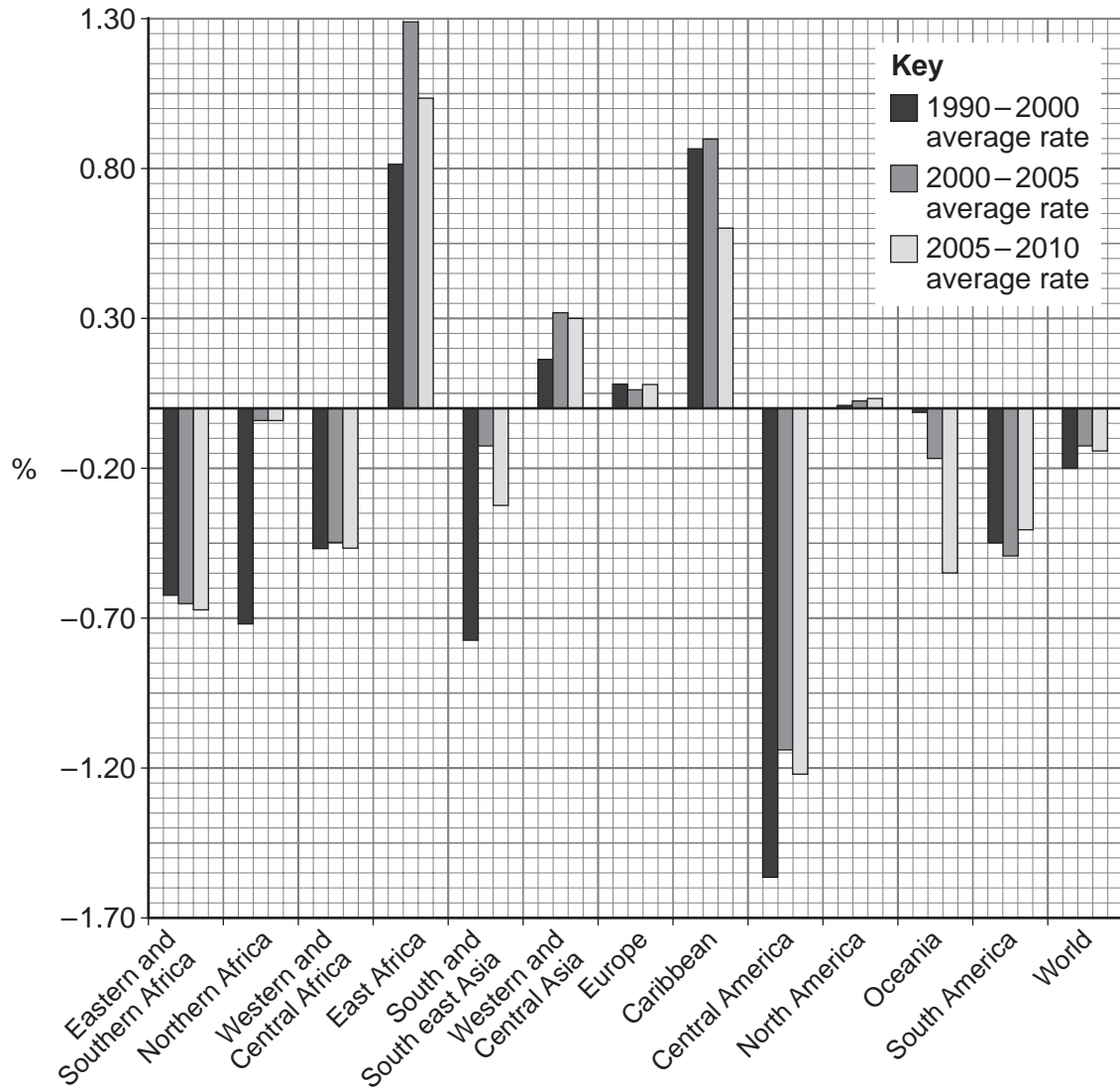


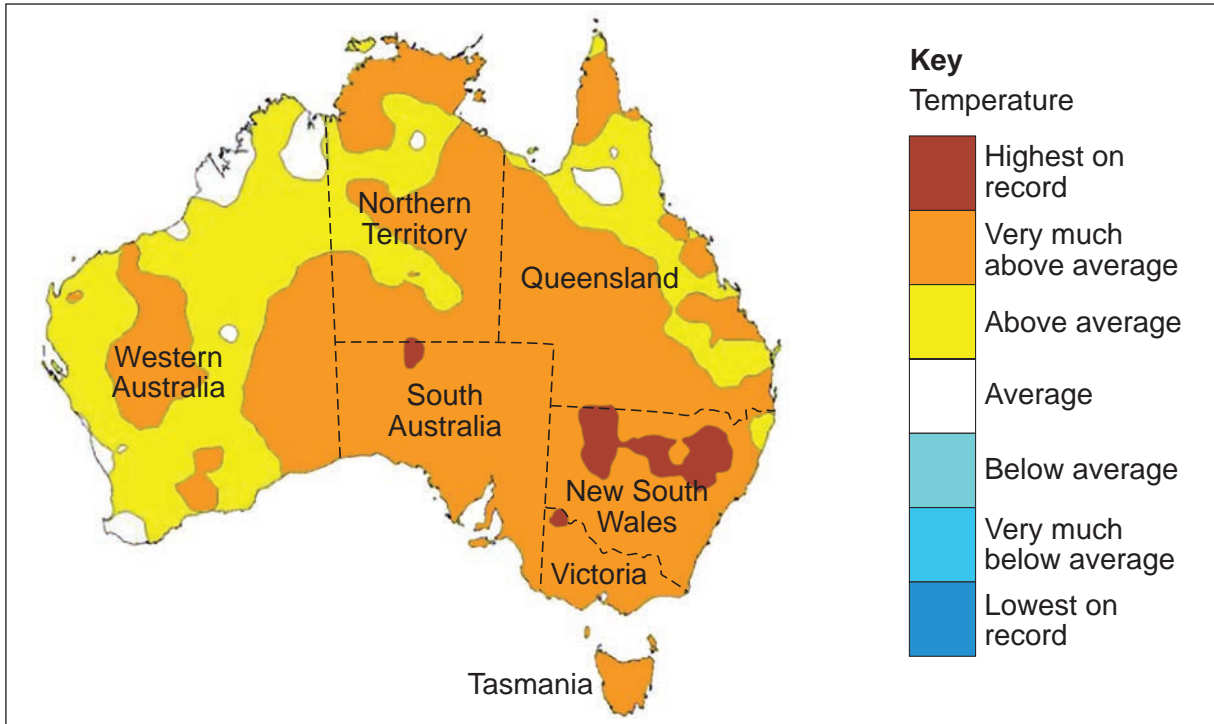
Figure 2

## Regional changes in forest cover between 1990 and 2010



**Figure 3a**

**Annual mean temperatures in Australia in 2018 compared to historical temperature observations**



**Figure 3b**

**Annual rainfall in Australia in 2018 compared to historical rainfall observations**

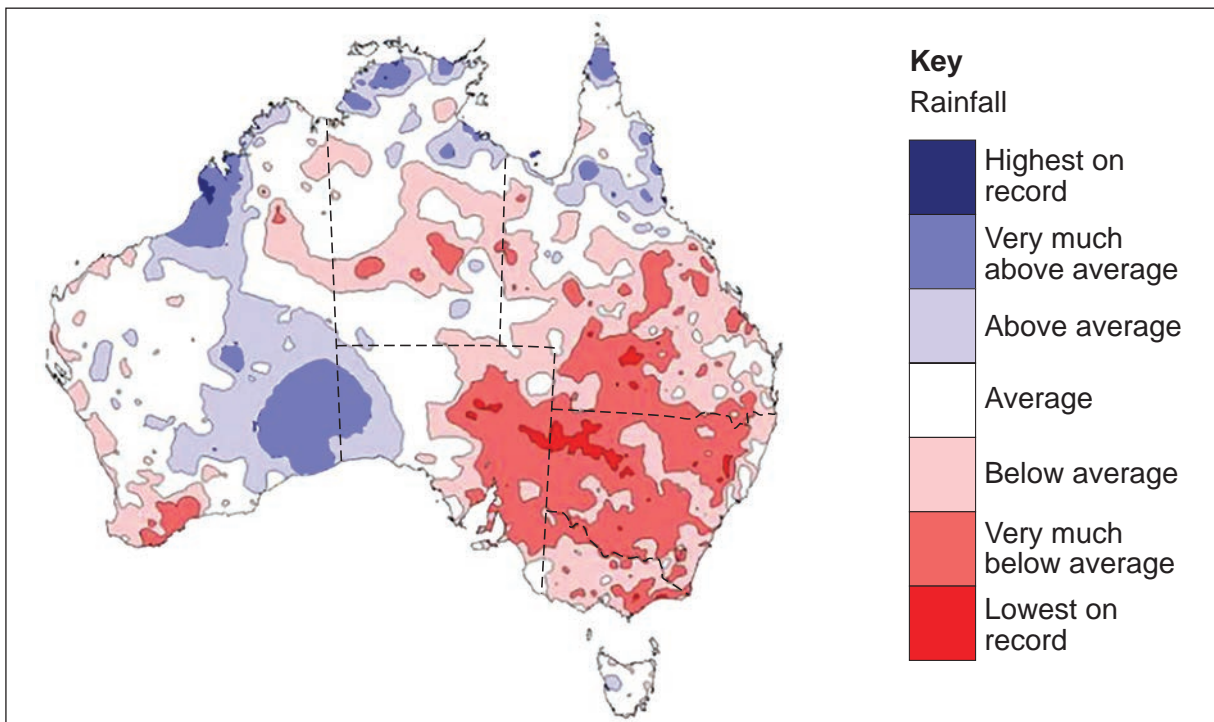




Figure 5a

Geographical variation in the 1992–2014 global sea level change using satellite data

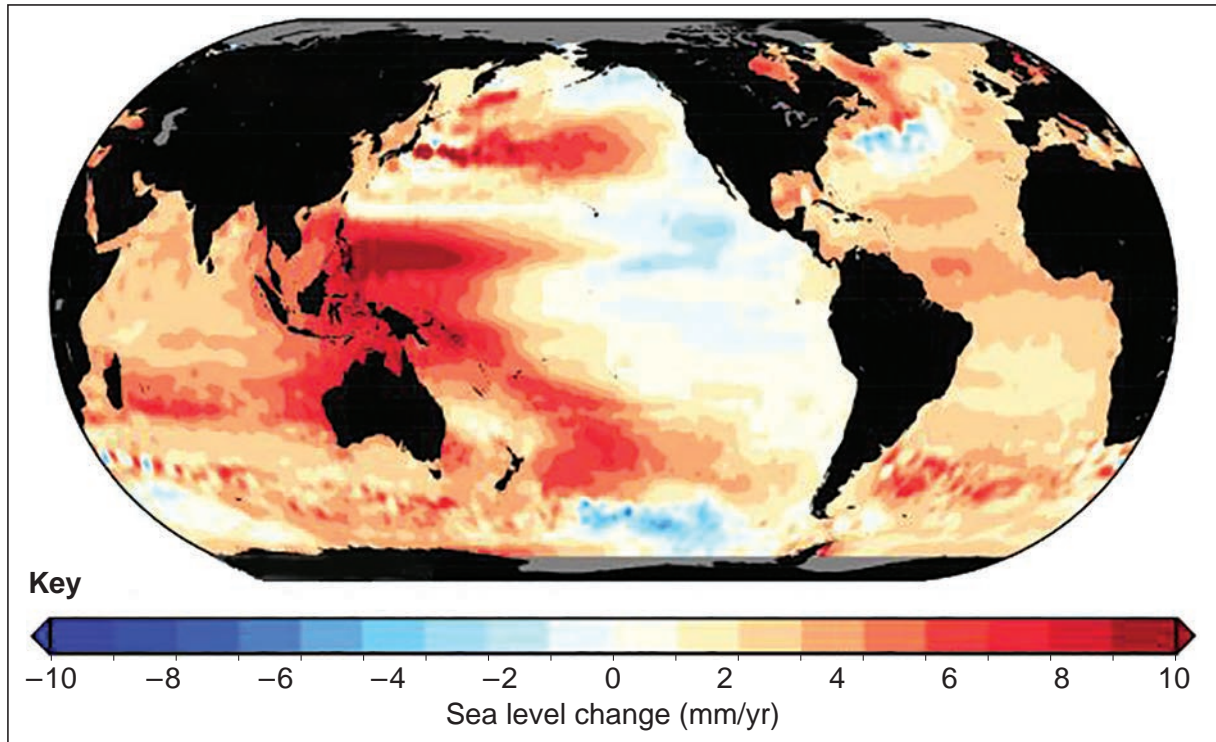
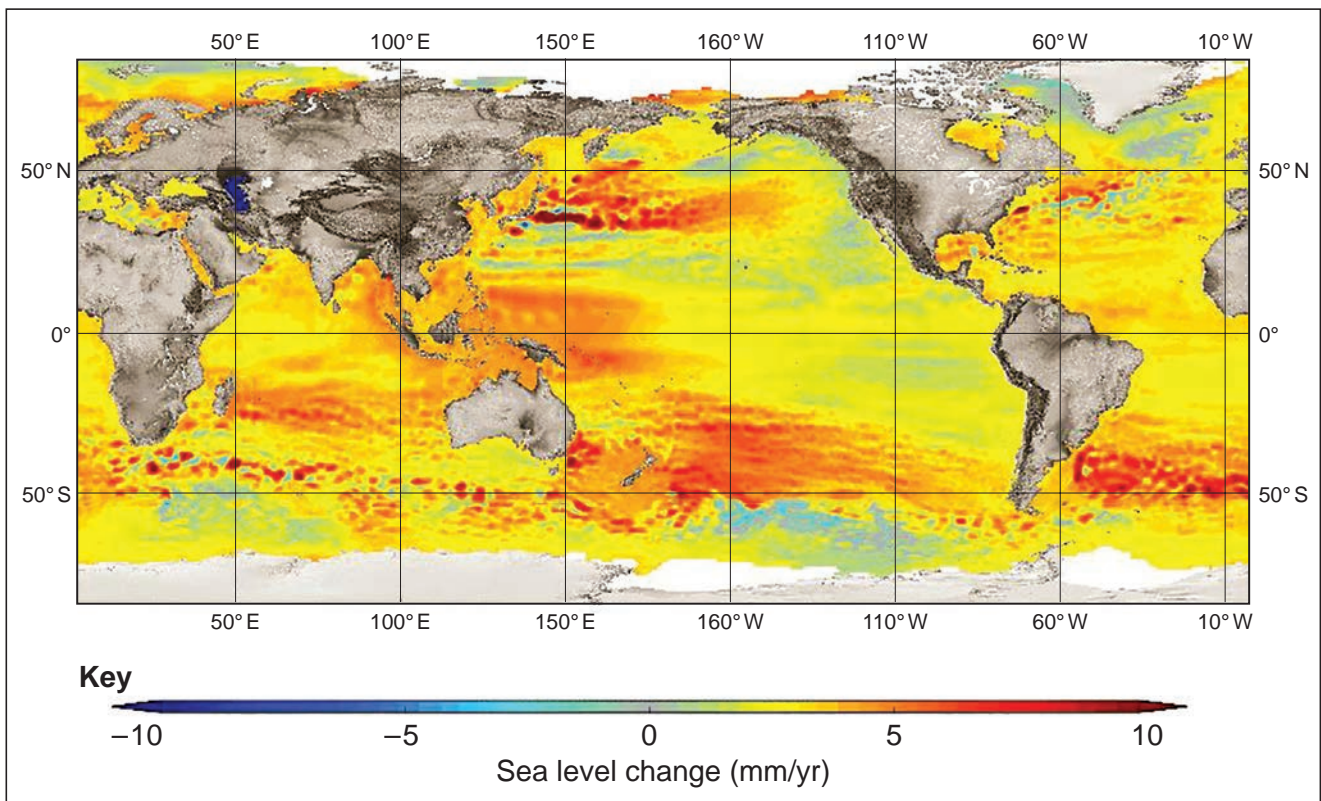


Figure 5b

Geographical variation in the 1992–2019 global sea level change using another source of satellite data



Turn over ►

Figure 7a

The distribution, size and type of selected Himalayan glaciers

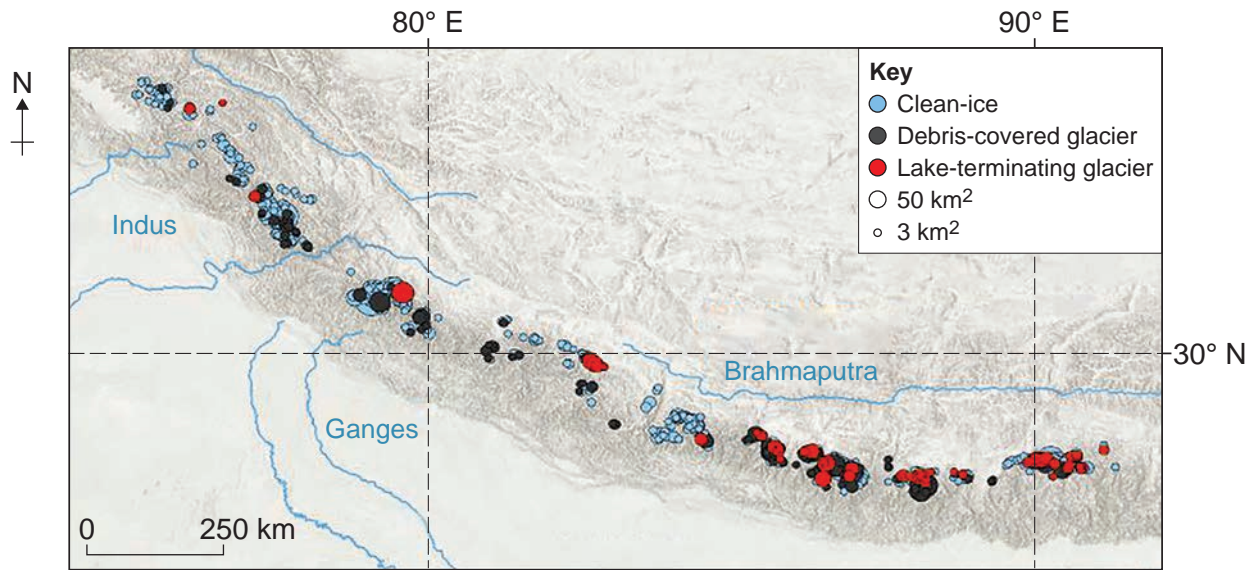


Figure 7b

The change in mass balance of the selected glaciers between 2000 and 2016

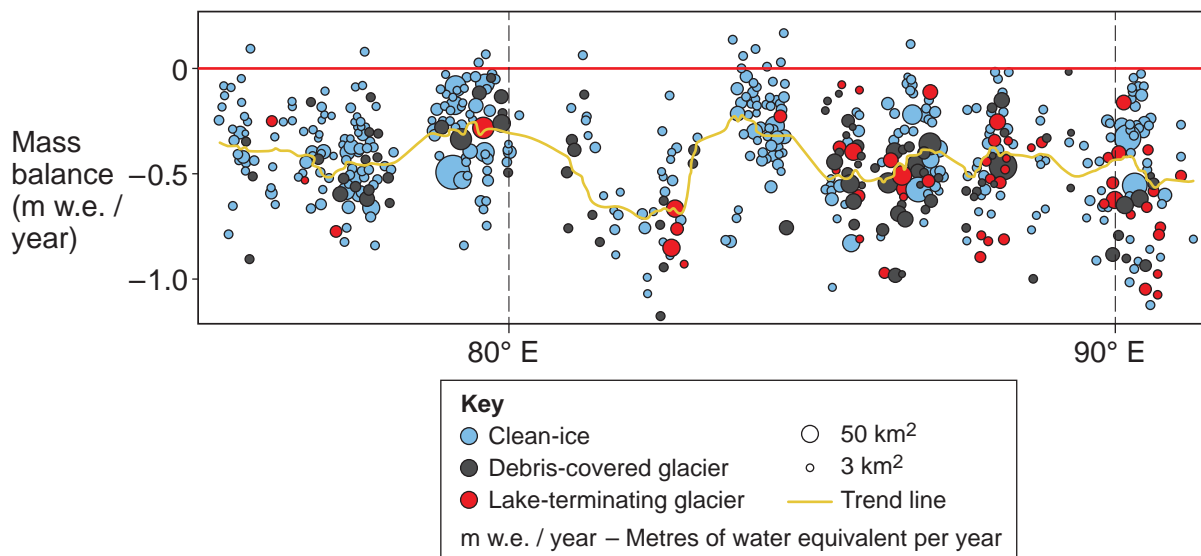
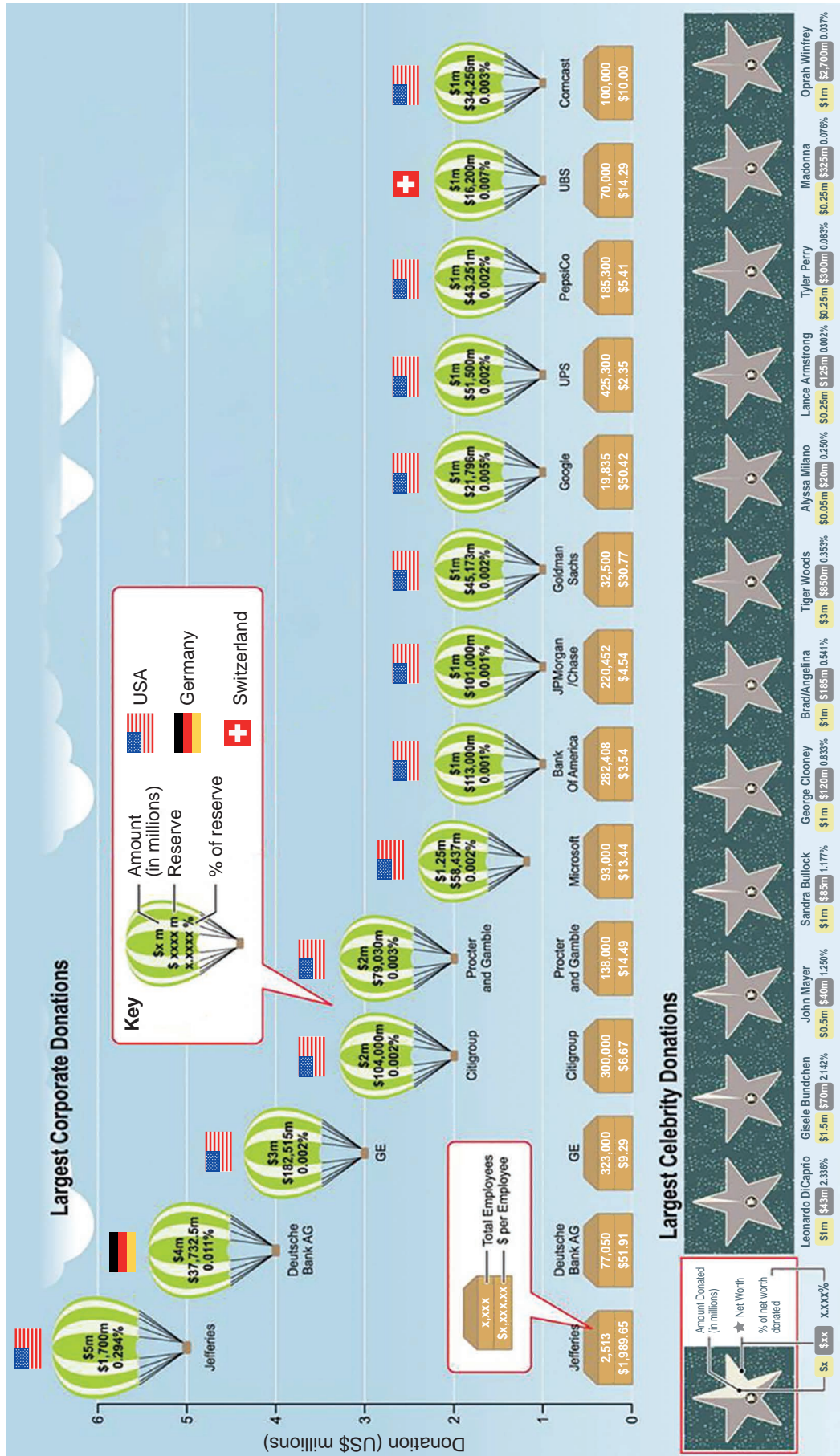




Figure 9

Responses by some companies and individuals to the Haiti earthquake, 2010

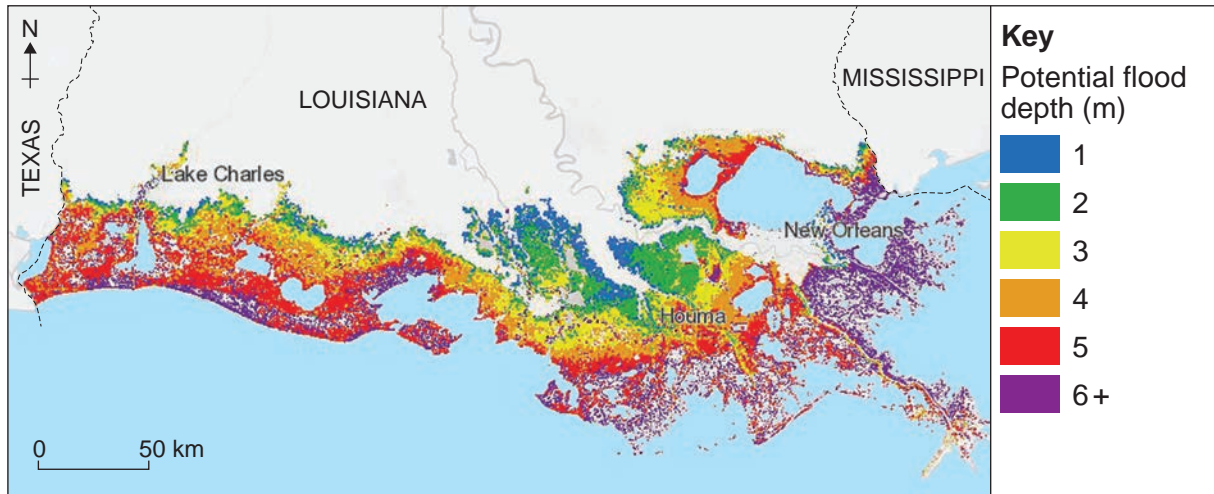


Turn over ▶

### Figures 10a, 10b and 10c

Data related to coastal flooding risk in Louisiana, USA, based upon a 2017 master plan. The information is based upon a 1 in 100 year extreme flood event.

Figure 10a



Note: Louisiana is located on the southern coast of the United States of America. Tropical storms are regular occurrences in the area. The local geomorphology is a contributory factor to the hazard.

Figure 10b

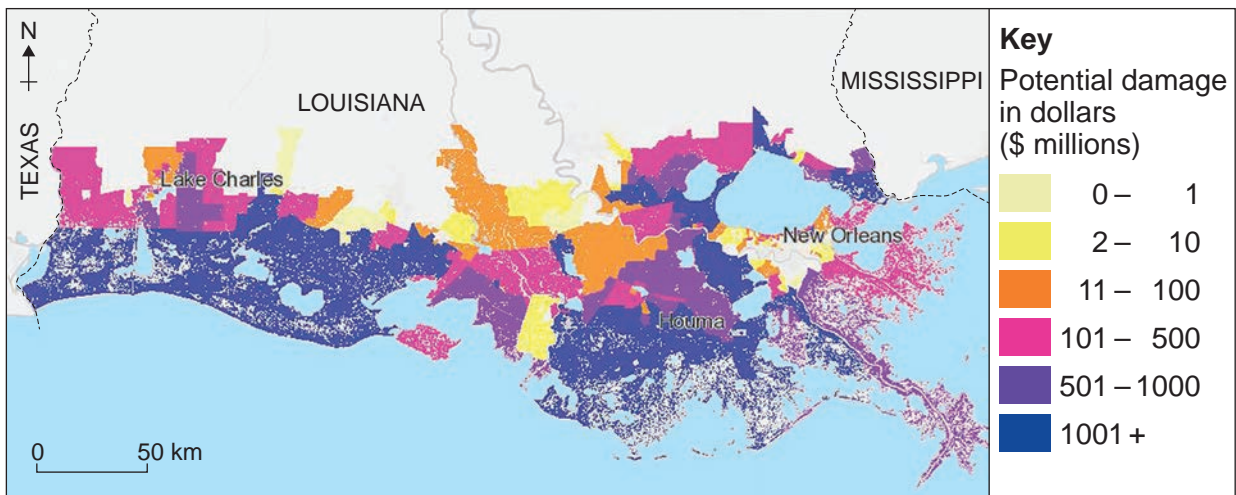
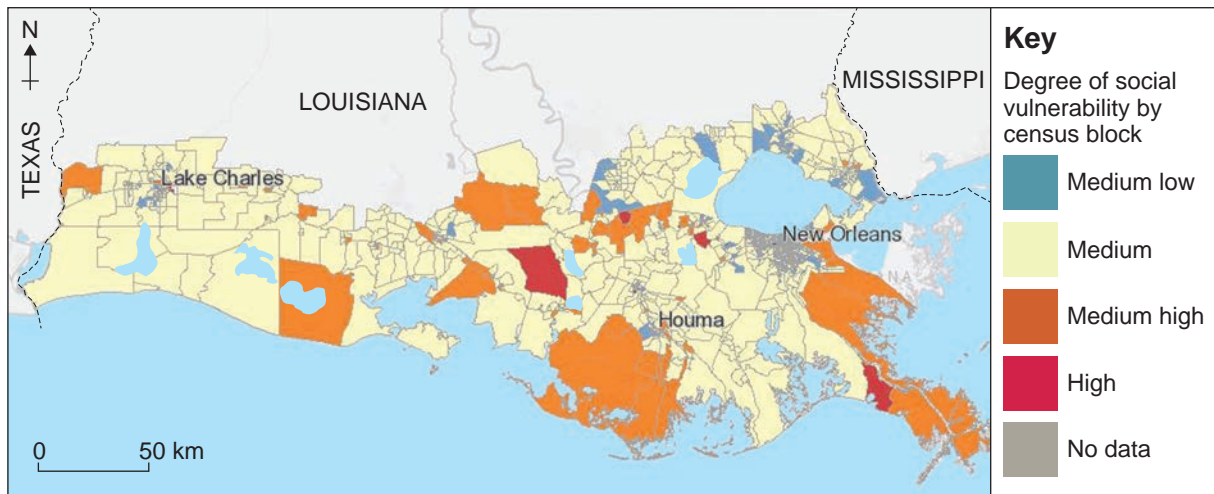


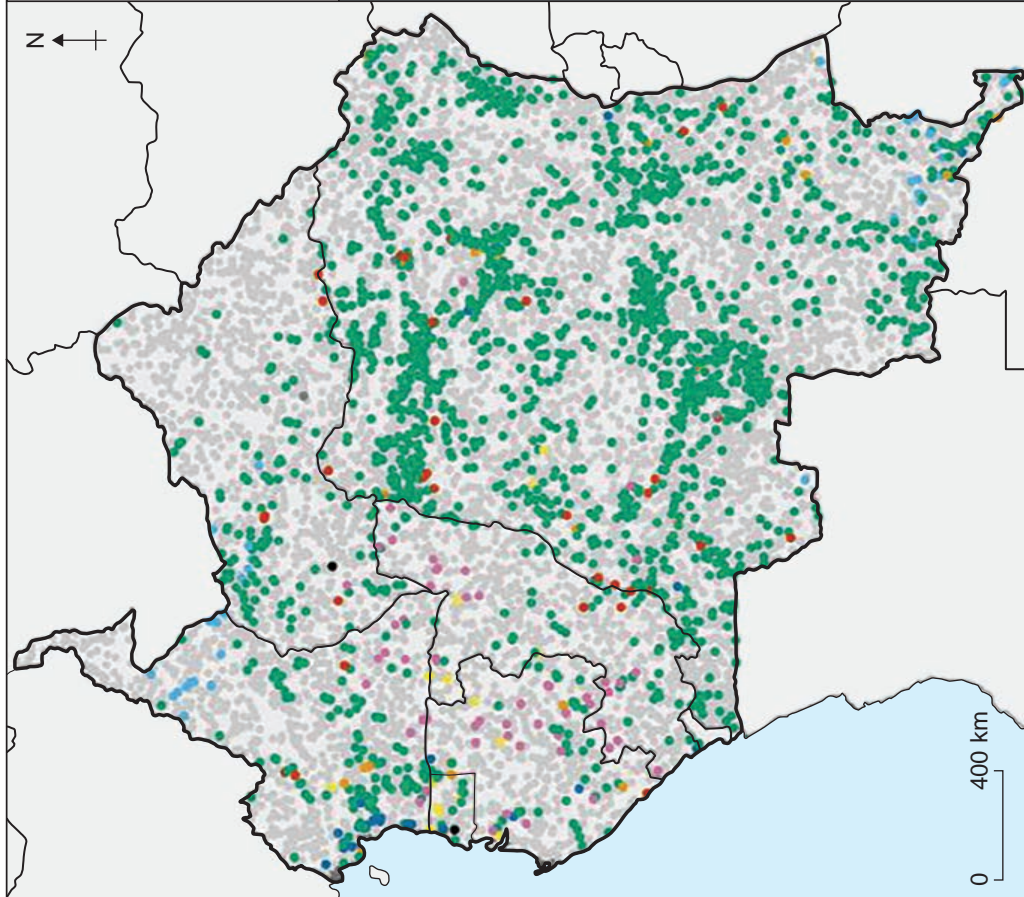


Figure 10c



Note: In broad terms, social vulnerability refers to the characteristics of a person or group that influences their capacity to anticipate, cope with, resist, or recover from the impact of the flood event.

**Figure 11a**  
The cause of deforestation  
in equatorial west Africa, 2000–2014



**Figure 11b**  
National estimates of forest loss by area  
and cause in equatorial west Africa, 2000–2014

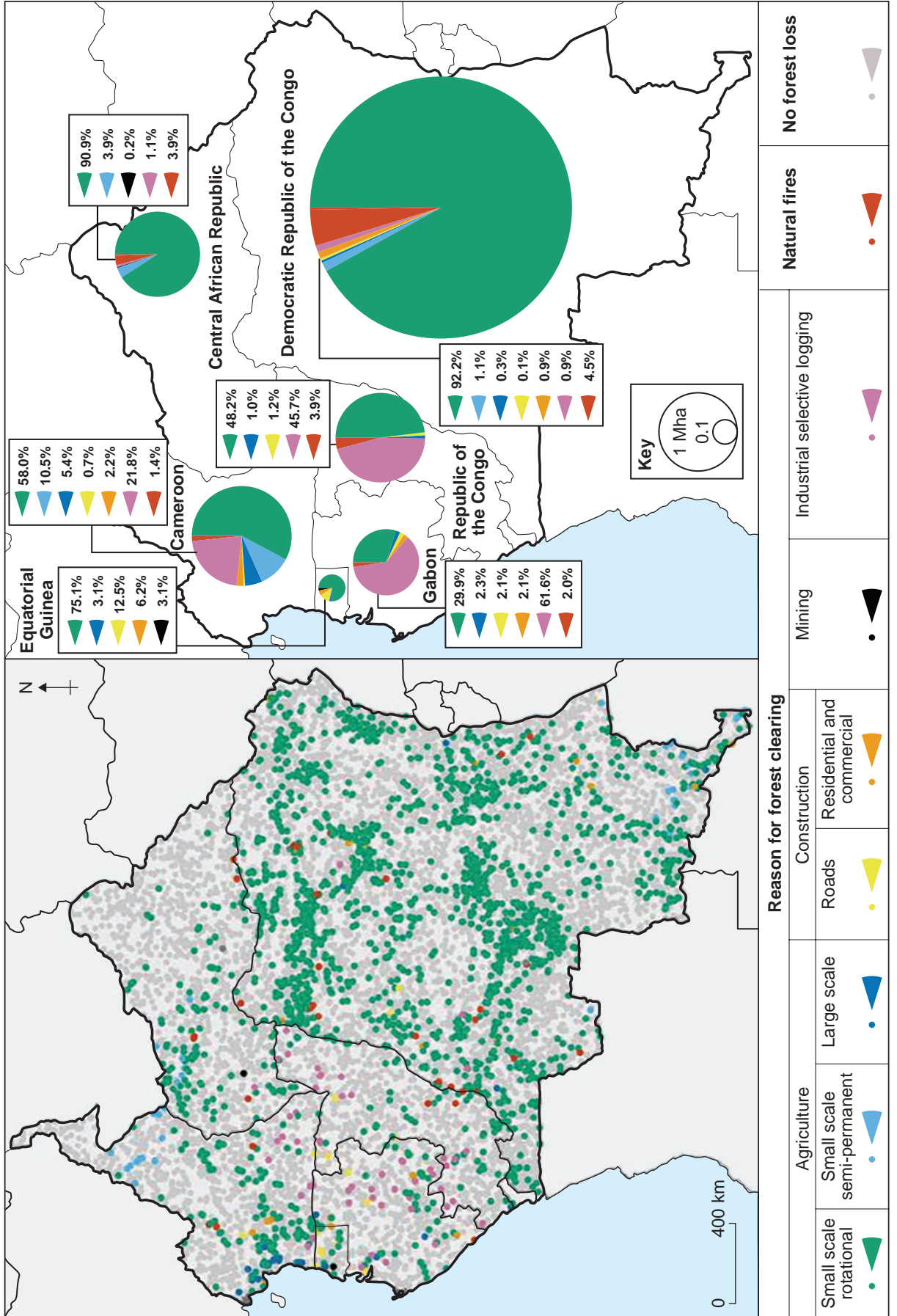
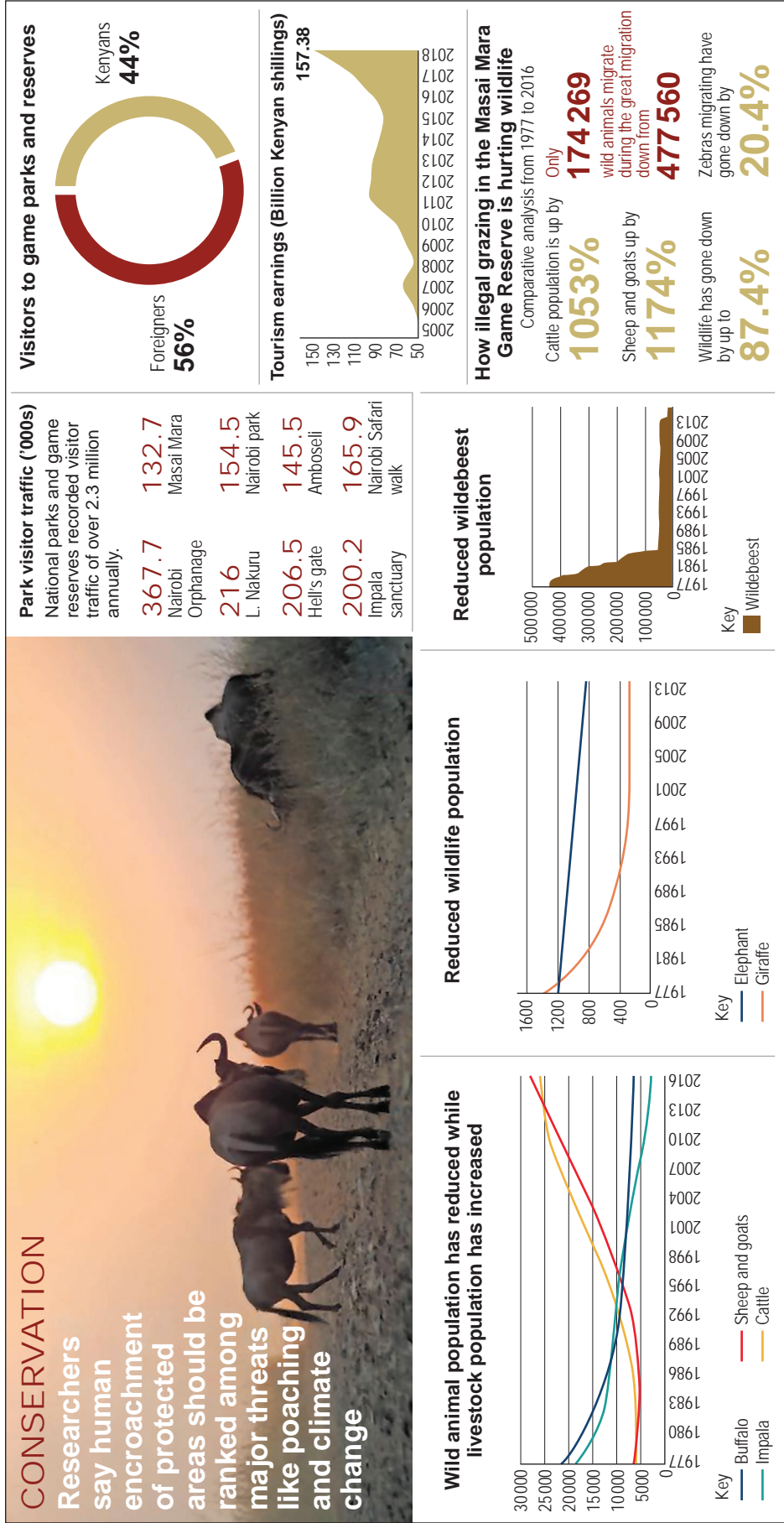


Figure 12

A range of issues facing game parks and reserves in Kenya, east Africa



END OF SOURCES



---

**There are no resources printed on this page**

**Copyright information**

For confidentiality purposes, all acknowledgements of third-party copyright material are published in a separate booklet. This booklet is published after each live examination series and is available for free download from [www.aqa.org.uk](http://www.aqa.org.uk).

Permission to reproduce all copyright material has been applied for. In some cases, efforts to contact copyright-holders may have been unsuccessful and AQA will be happy to rectify any omissions of acknowledgements. If you have any queries please contact the Copyright Team.

Copyright © 2022 AQA and its licensors. All rights reserved.

