

A-level GEOGRAPHY

Paper 2 Human Geography

Insert

This insert contains:

- Figures 2a and 2b for use with Question 1
- Figures 3a and 3b for use with Question 2
- Figure 5 for use with Question 3
- Figure 6 for use with Question 3
- Key for Figure 6
- Figures 7a and 7b for use with Question 4
- Figures 8a, 8b and 8c for use with Question 4
- Figures 10a and 10b for use with Question 5

Figure 2a – percentage breakdown of main tourist activities for visitors to Antarctica in 2016–17. In the 2016–17 season there were 44 202 visitors to Antarctica.

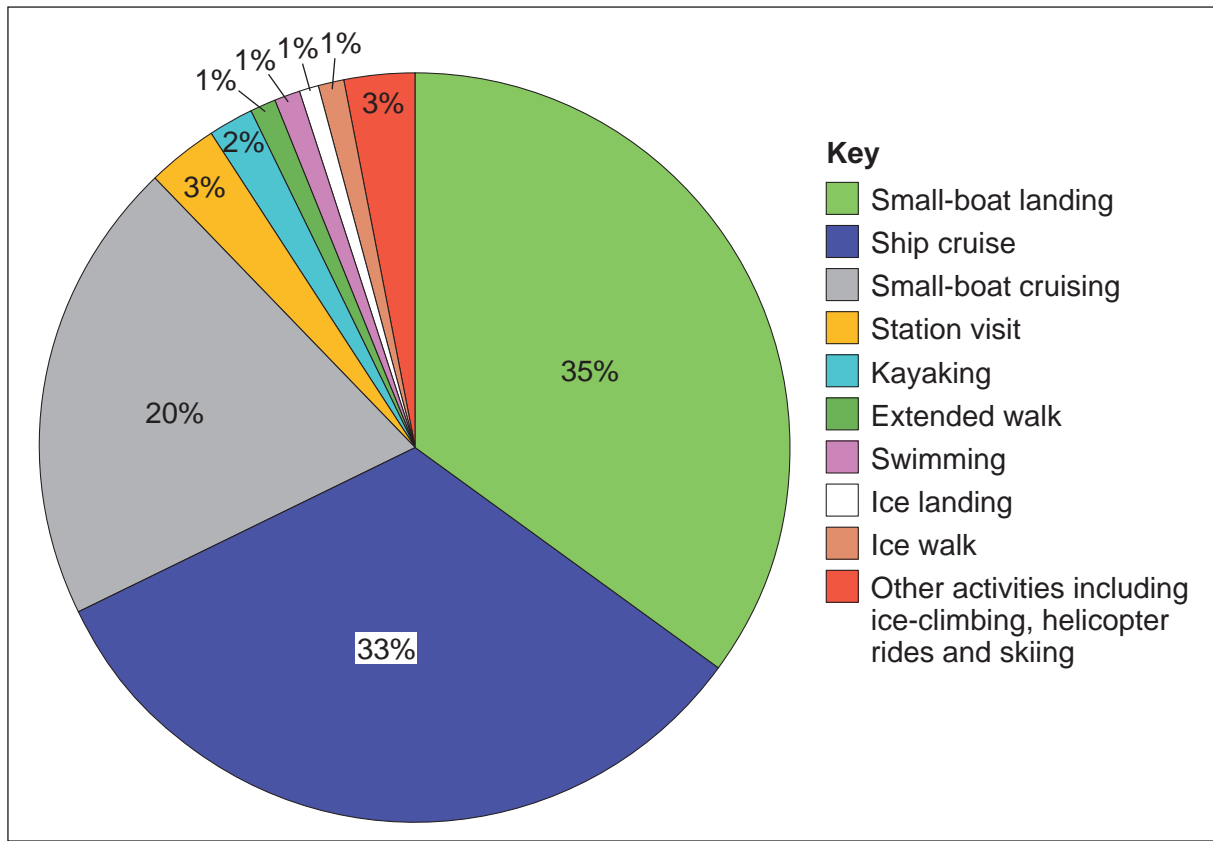


Figure 2b – a small-boat landing party of tourists visiting a penguin colony on South Orkney Islands in Antarctica



Figure 3a – the results of a survey asking residents about their perception of safety in Cardiff in 2016

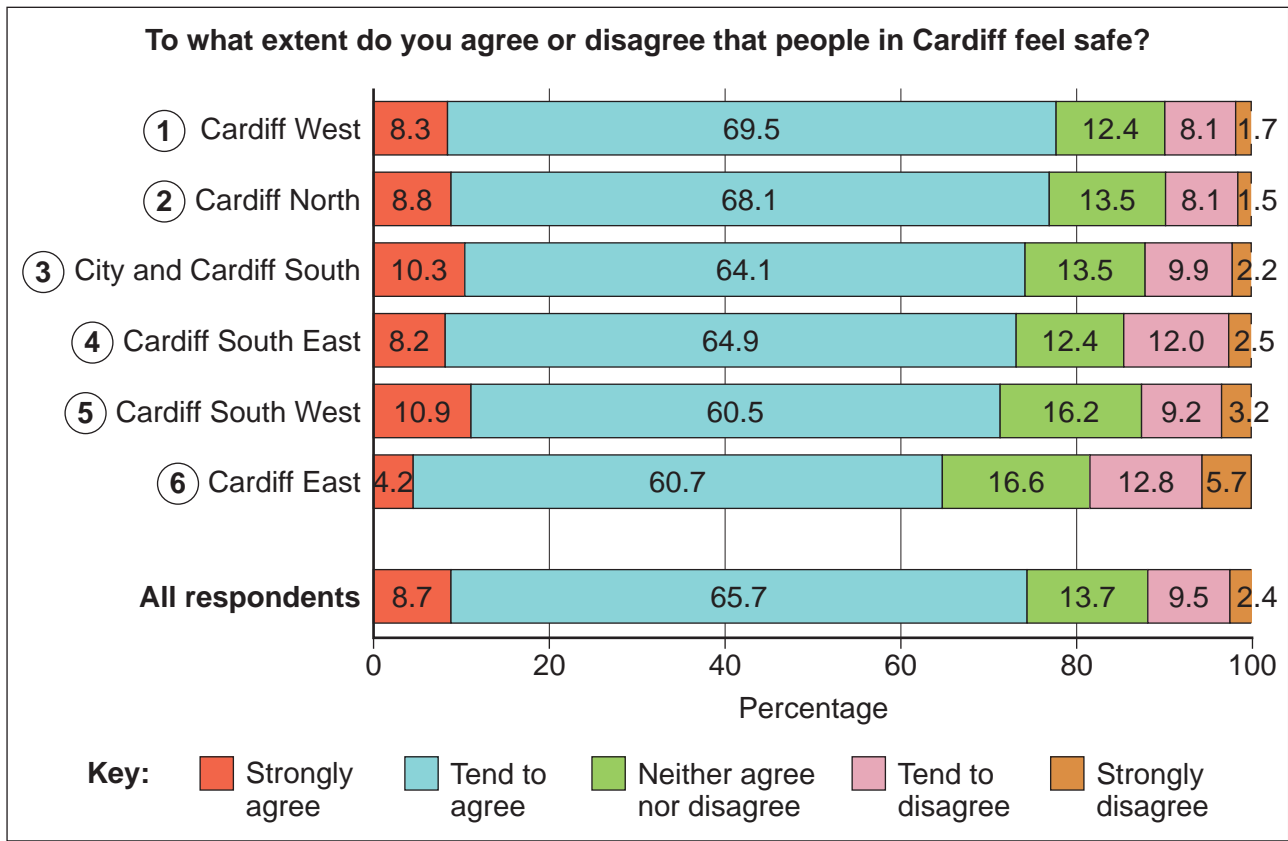


Figure 3b – the incidence of violent crime in Cardiff in 2016

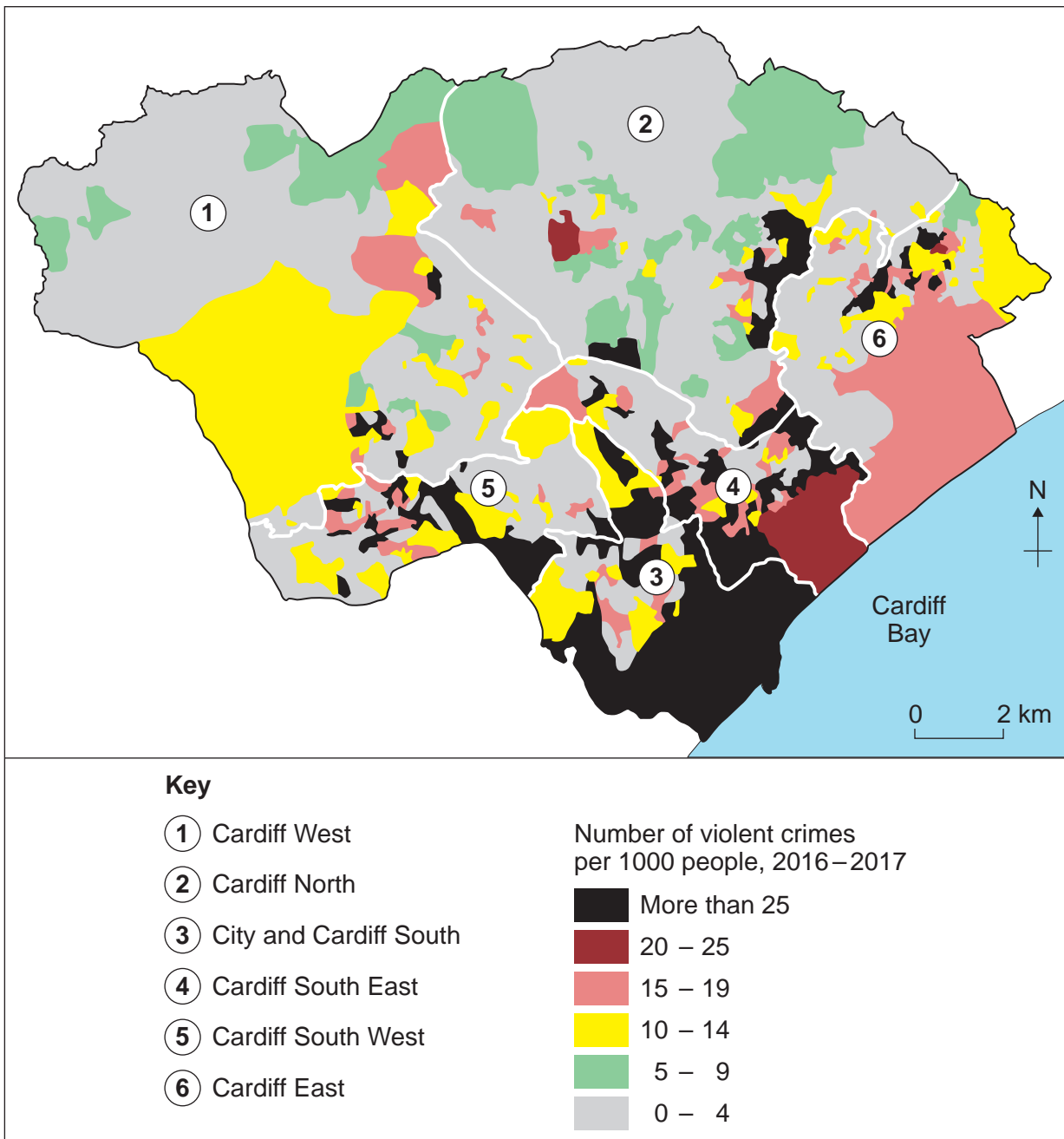
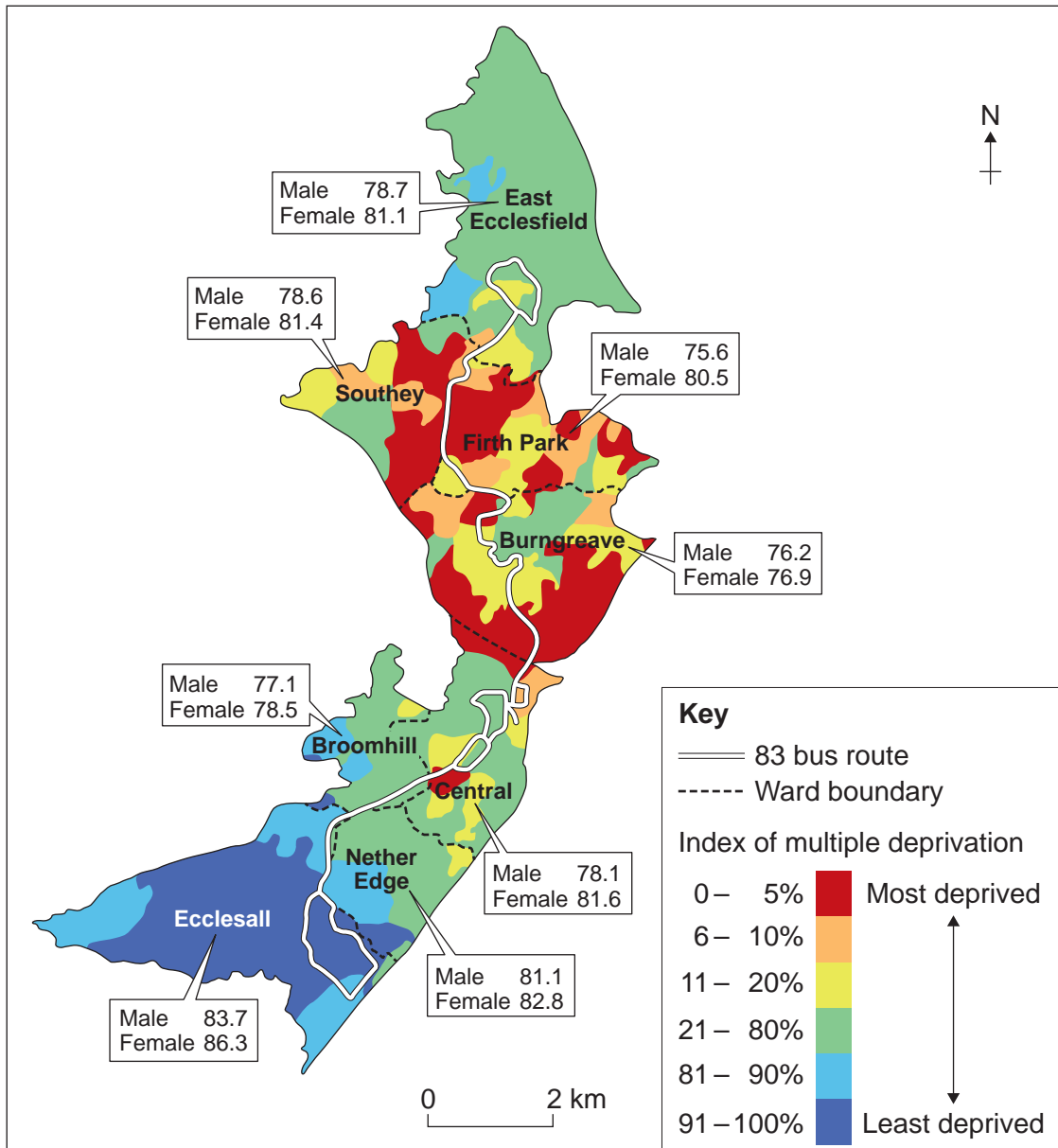


Figure 5 – the change in life expectancy along the number 83 bus route in Sheffield, a city in the UK. The index of multiple deprivation is also shown on the map.



Note: The life expectancy data provided is the average for each ward.

There are no resources printed on this page

Turn over for the next figure

Turn over ►

Figure 6 – an OS map extract of Plymouth, a city on the south west coast of England



Note: Map not reproduced to 1:50 000 scale.

Key for Figure 6, the OS map extract

ROADS AND PATHS

Not necessarily rights of way

Service area
Junction number
Elevated
Unfenced
Dual carriageway
Footbridge
Bridge
Gradient: steeper than 20% (1 in 5), 14% to 20% (1 in 7 to 1 in 5)
Gates, Road tunnel
Ferry (passenger), Ferry (vehicle)

Motorway (dual carriageway)
Primary Route (recommended through route)
Main road
Road under construction
Secondary road
Narrow road with passing places
Road generally more than 4m wide
Road generally less than 4m wide
Path / Other road, drive or track
Gradient: steeper than 20% (1 in 5), 14% to 20% (1 in 7 to 1 in 5)
Gates, Road tunnel
Ferry (passenger), Ferry (vehicle)

RAILWAYS

Track multiple or single
Track under construction
Siding
Tunnel, cuttings
Light rapid transit system, narrow gauge or tramway
Bridges, footbridge
Level crossing
Viaduct, embankment
Station, (a) principal
Light rapid transit system station

WATER FEATURES

Marsh or salting
Towpath
Lock
Ford
Beacon
Sand Dunes
Flat rock
Lighthouse (disused)
Lighthouse (in use)
Shingle
Low water mark
High water mark
Mud
Canal (dry)
Weir
Footbridge
Bridge
Normal tidal limit
Aqueduct
Lake

HEIGHTS

1 metre = 3.2808 feet

Contours are at 10 metres vertical interval

Heights are to the nearest metre above mean sea level

Where two heights are shown the first height is to the base of the triangulation pillar and the second (in brackets) to the highest natural point of the hill

PUBLIC RIGHTS OF WAY

Footpath
Bridleway
Restricted byway
Byway open to all traffic

The symbols show the defined route so far as the scale of mapping will allow.

The representation on this map of any other road, track or path is no evidence of the existence of a right of way. Not shown on maps of Scotland

Danger Area Firing and Test Ranges in the area. Danger! Observe warning notices.

BOUNDARIES

National
District
County, Unitary Authority, Metropolitan District or London Borough
National Park

ROCK FEATURES

Outcrop
Cliff
Scree

OTHER PUBLIC ACCESS

Other route with public access (not normally shown in urban areas). Alignments are based on the best information available. These routes are not shown on maps of Scotland.

On-road cycle route
Traffic-free cycle route
National Cycle Network number
Regional Cycle Network number
National Trail, European Long Distance Path, Long Distance Route, selected Recreational Routes

ANTIQUITIES

Site of antiquity
Battlefield (with date)
Visible earthwork
Roman
Non-Roman

TOURIST INFORMATION

Camp site / caravan site
Garden
Golf course or links
Information centre (all year / seasonal)
Nature reserve
Parking, Park and ride (all year / seasonal)
Picnic site
Recreation / leisure / sports centre
Selected places of tourist interest
Telephone, public / roadside assistance
Viewpoint
Visitor centre
Walks / Trails
World Heritage site or area
Youth hostel

LAND FEATURES

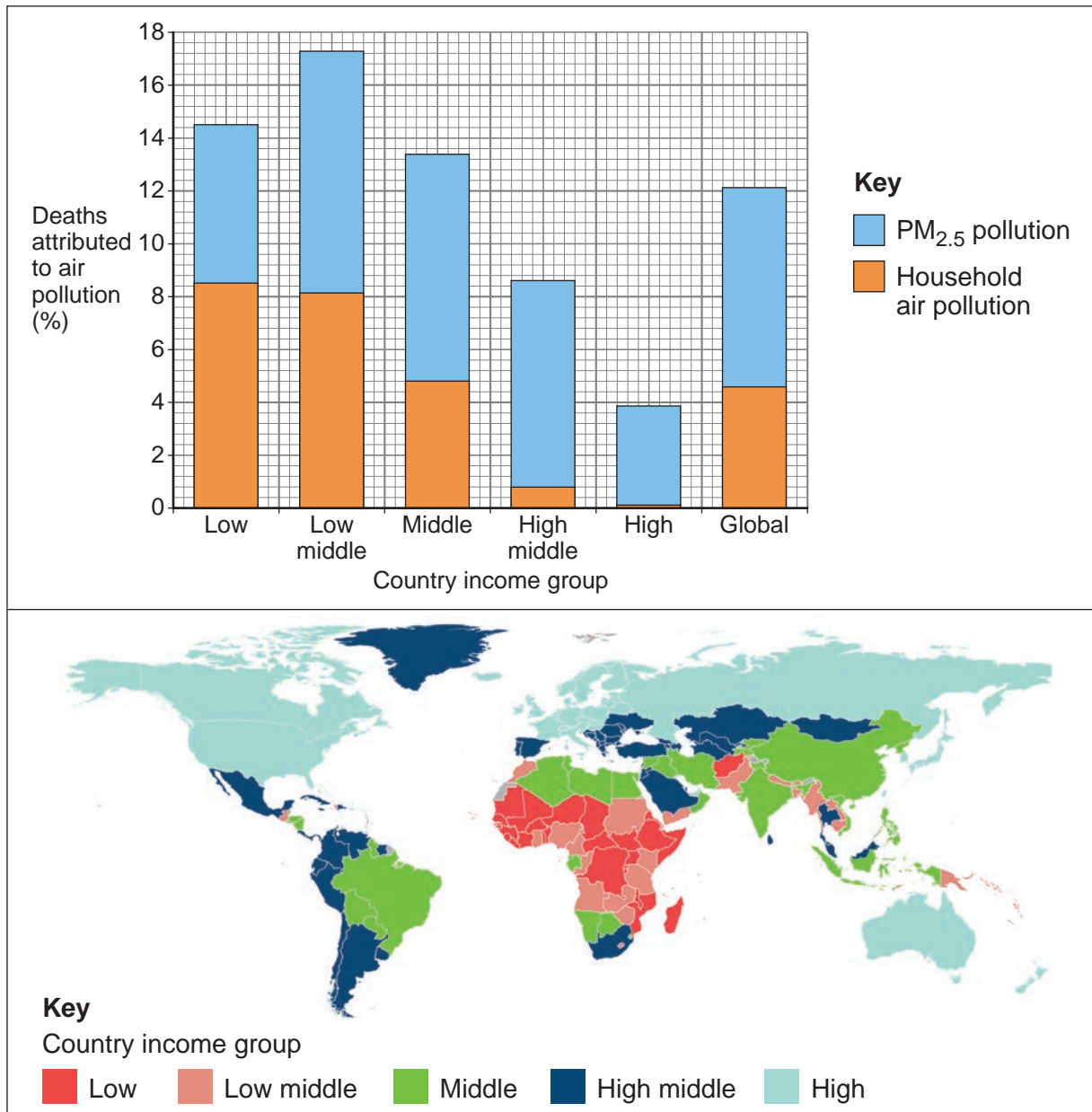
Electricity transmission line (pylons shown at standard spacing)
Pipe line (arrow indicates direction of flow)
Buildings
Important building (selected)
Bus or coach station
Current or former place of worship (with tower, with spire, minaret or dome)
Place of worship
Glass structure
Heliport
Triangulation pillar
Mast
Wind pump, wind turbine
Windmill with or without sails
Graticule intersection at 5' intervals
Cutting, embankment
Landfill site or slag/spoil heap
Coniferous wood
Non-coniferous wood
Mixed wood
Orchard
Park or ornamental ground
Forestry Commission land
National Trust (always open / limited access, observe local signs)
National Trust for Scotland (always open / limited access, observe local signs)

ABBREVIATIONS

Br Bridge MS Milestone
Cemy Cemetery MUS Museum
CG Cattle grid P Post office
CH Clubhouse PC Public convenience (in rural areas)
Fm Farm PH Public house
Ho House Sch School
MP Milepost TH Town Hall, Guildhall or equivalent

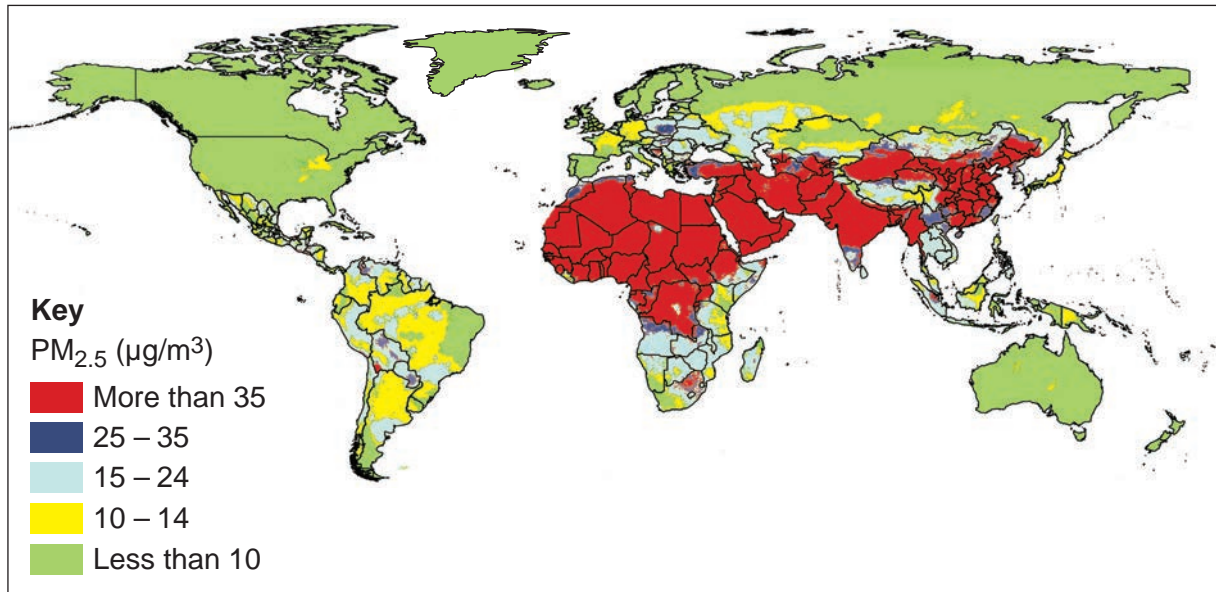
Turn over ►

Figure 7a – deaths attributed to air pollution by country income groups in 2016



Note: PM_{2.5} refers to fine particles with diameters less than 2.5 micrometers.

Figure 7b – the global distribution of the concentration of PM_{2.5} atmospheric pollution in 2016



Note: The WHO Guideline for healthy air is less than 10 PM_{2.5}

Figure 8a – the number of refugees received by selected European countries from 1 January to 30 June 2015

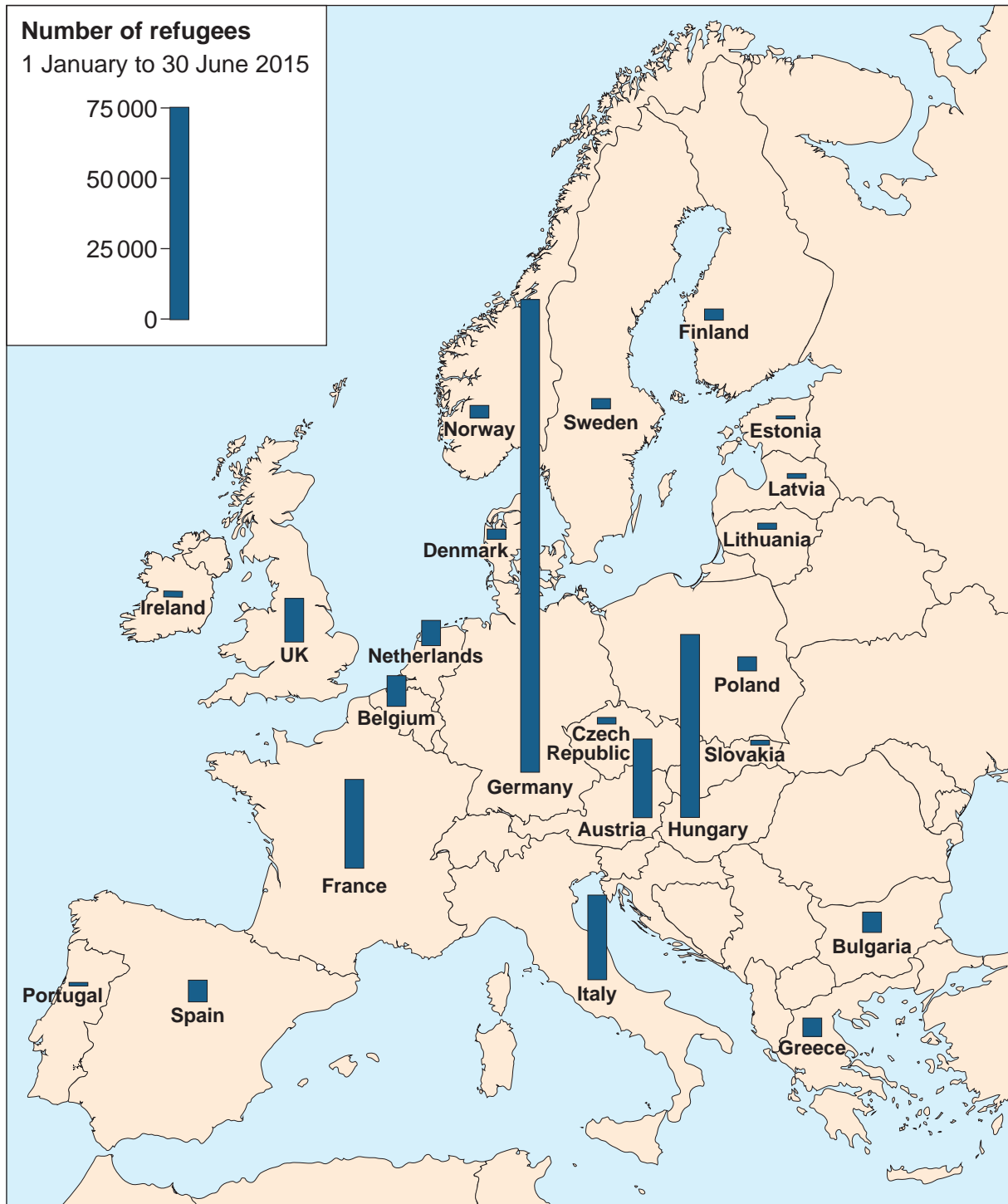
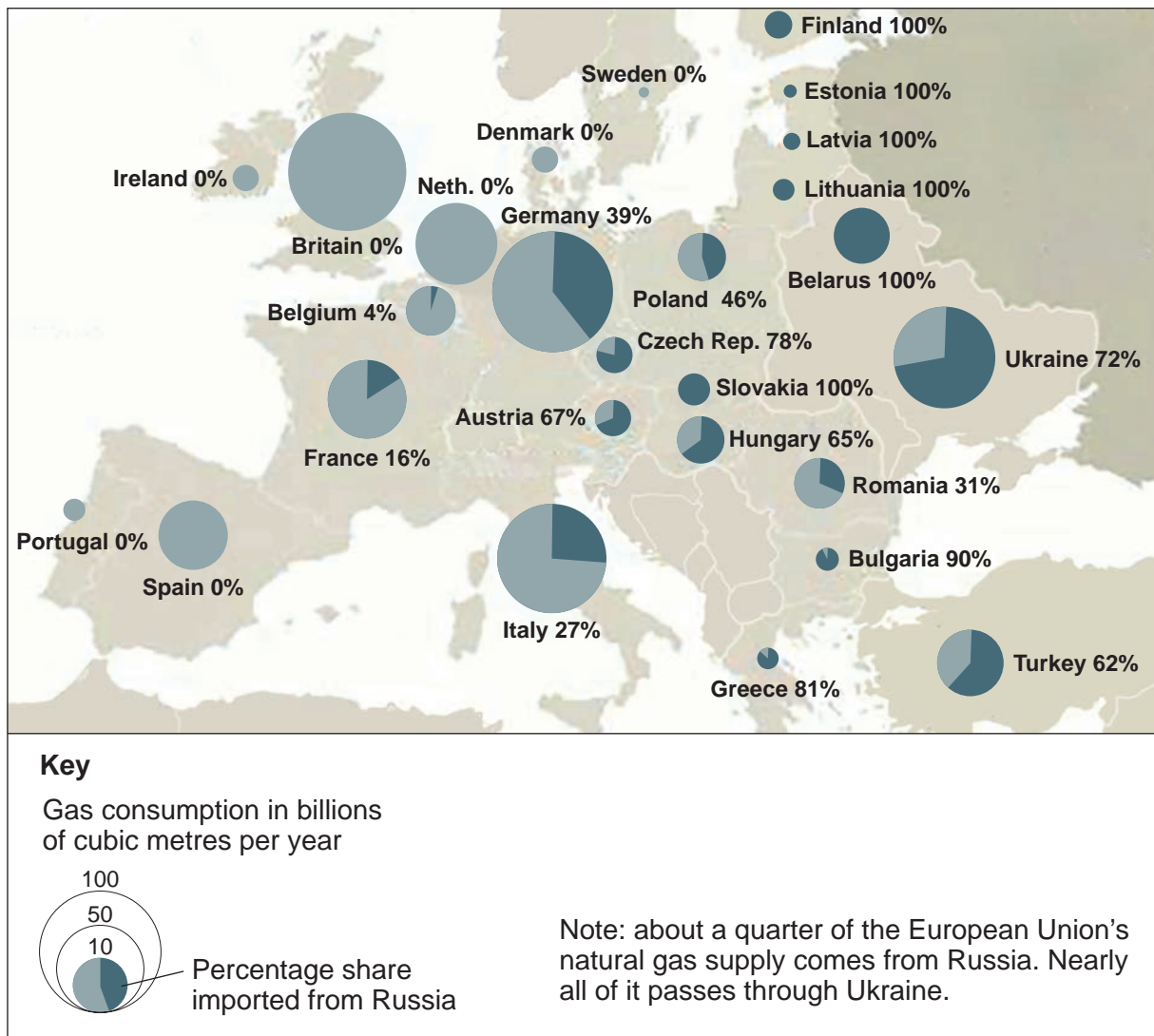


Figure 10a – selected gas pipelines and liquefied natural gas terminals in Europe in 2014



Figure 10b – gas consumption and the level of dependence on Russian gas in 2014



END OF SOURCES

There are no resources printed on this page

Copyright information

For confidentiality purposes, all acknowledgements of third-party copyright material are published in a separate booklet. This booklet is published after each live examination series and is available for free download from www.aqa.org.uk.

Permission to reproduce all copyright material has been applied for. In some cases, efforts to contact copyright-holders may have been unsuccessful and AQA will be happy to rectify any omissions of acknowledgements. If you have any queries please contact the Copyright Team.

Copyright © 2020 AQA and its licensors. All rights reserved.

