

## A-level GEOGRAPHY

Paper 1 Physical Geography

---

### Insert

This insert contains:

- Figure 1 for use with Question 1
- Figure 2 for use with Question 1
- Figures 3a and 3b for use with Question 2
- Figure 5 for use with Question 3
- Figure 7 for use with Question 4
- Figures 9a–9d for use with Question 5
- Figure 10 for use with Question 5
- Figures 11 for use with Question 6
- Figures 12 for use with Question 6

Figure 1

The impact of different rates of deforestation and afforestation upon land surface temperature (LST) at different latitudes. The data was collected between 2000 and 2011.

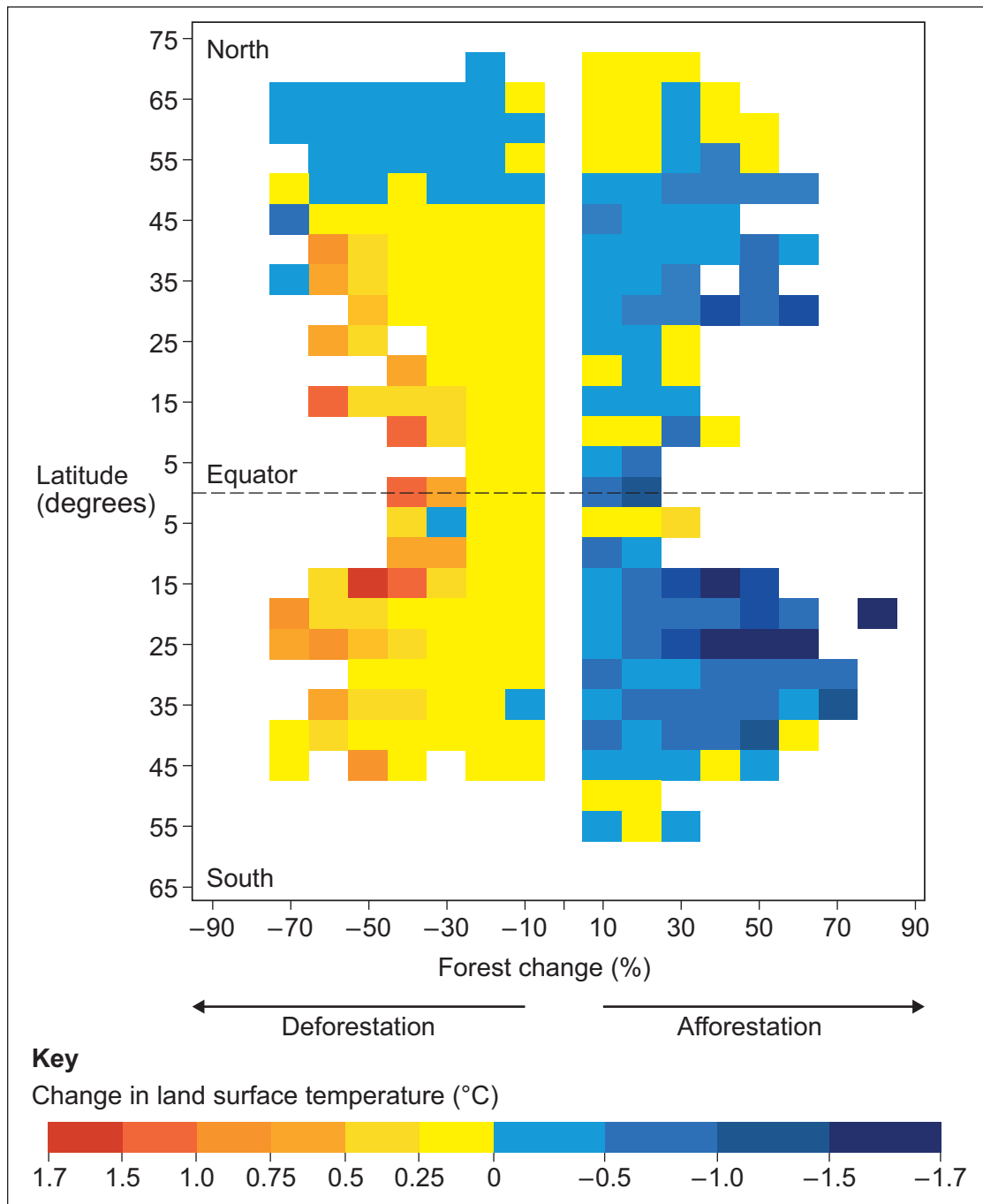
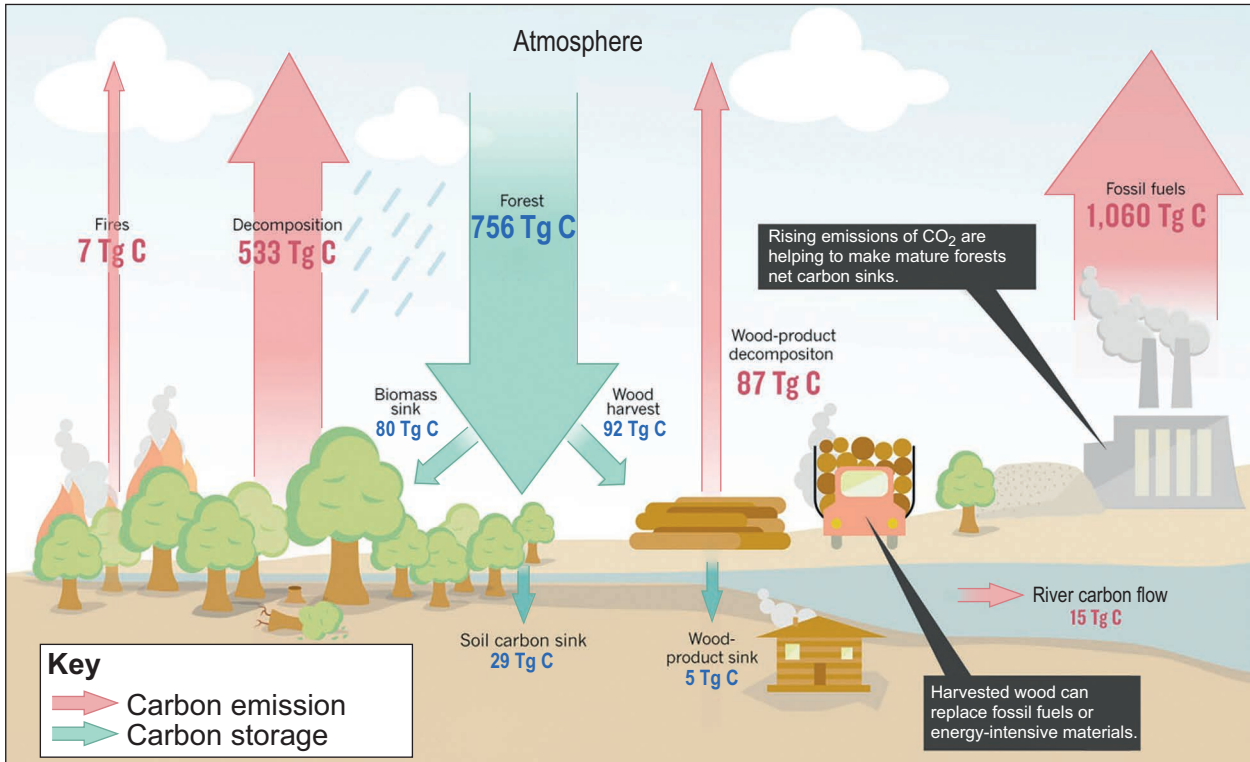


Figure 2

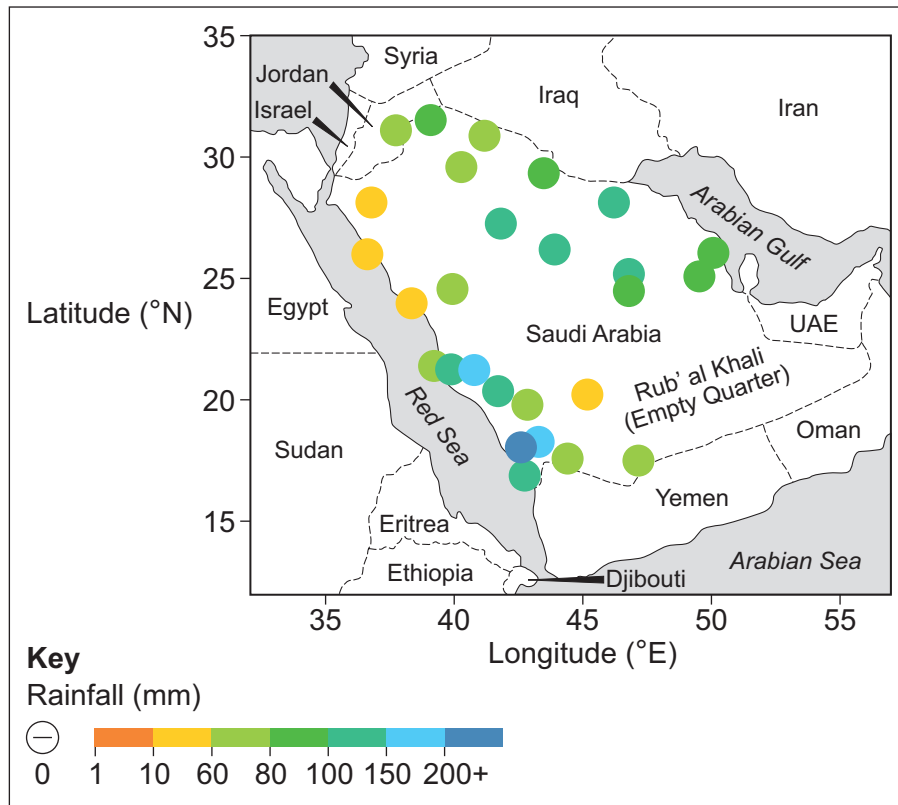
## A simplified version of Europe's forest carbon cycle



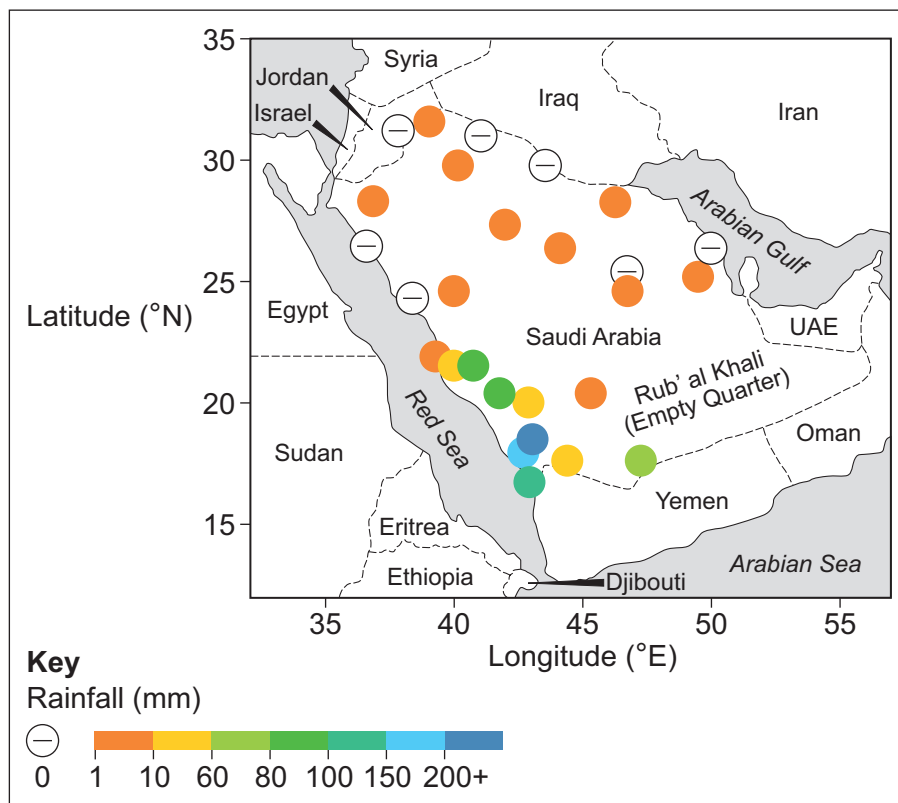
Note 1: Between 1990–2005, Europe's 1.5 million square kilometres of forests acted as a carbon sink absorbing about 120 teragrams of carbon more each year than they released, or 10% of the continent's fossil-fuel emissions.

Note 2: A teragram (Tg) is equal to one billion kilograms.

**Figure 3a – average total rainfall (1979–2009) between November and April measured at multiple recording stations across Saudi Arabia**



**Figure 3b – average total rainfall (1979–2009) between June and September measured at multiple recording stations across Saudi Arabia**



Note: The wet season runs from November to April and the dry season runs from June to September.

Figure 5

The distribution of coastal erosion and accretion (sediment build up) across selected European coastlines in 2004

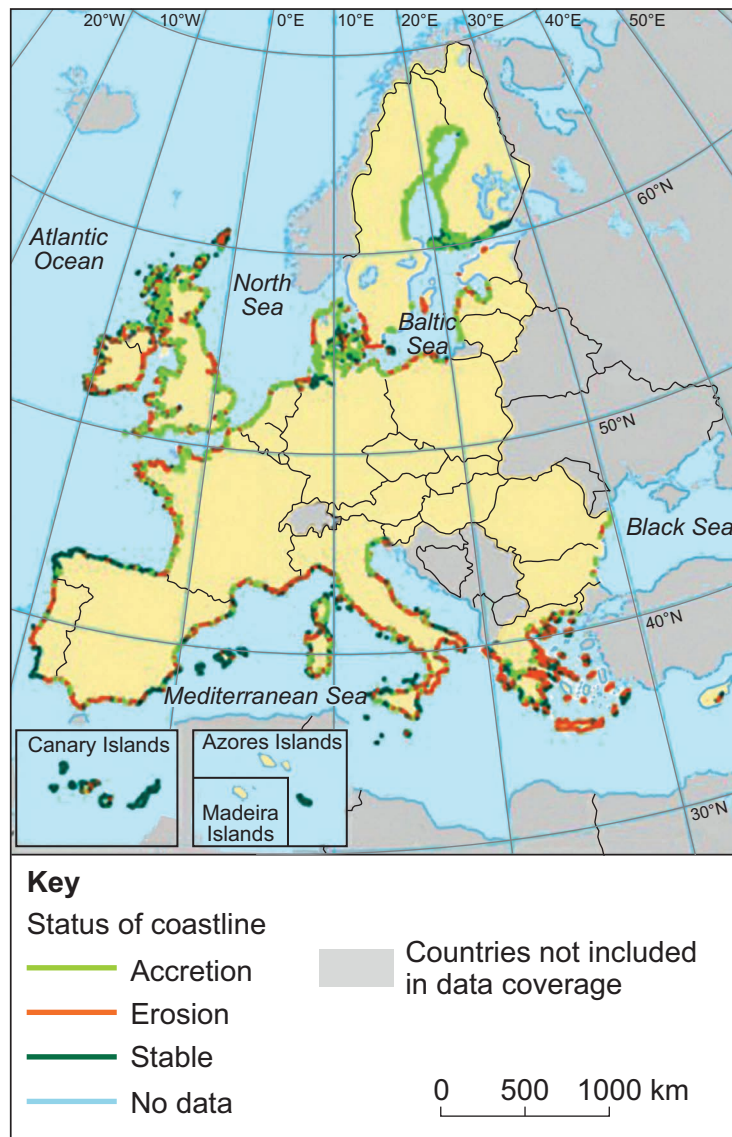
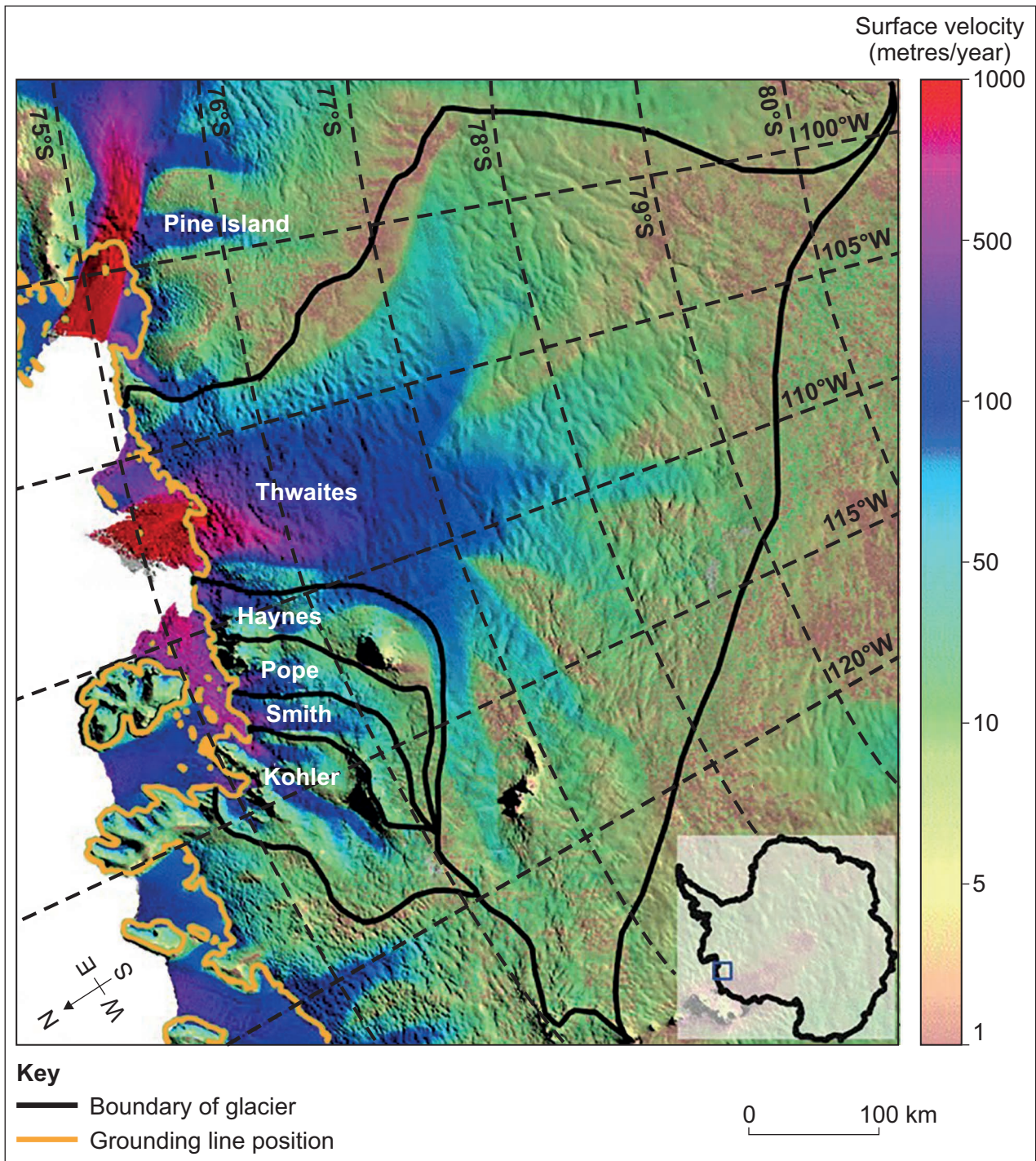


Figure 7

The surface velocity of various glaciers, including Thwaites Glacier, Antarctica



Note: At the grounding line, glacier ice comes into contact with the sea and starts to float.

Figures 9a – 9d

Information about volcanic eruptions

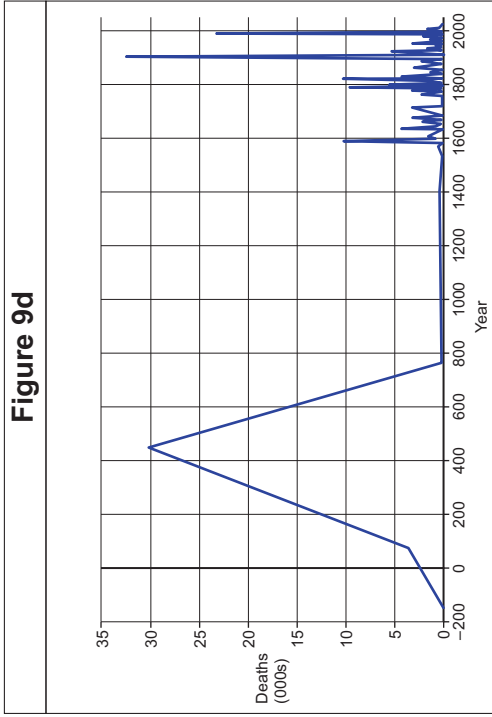
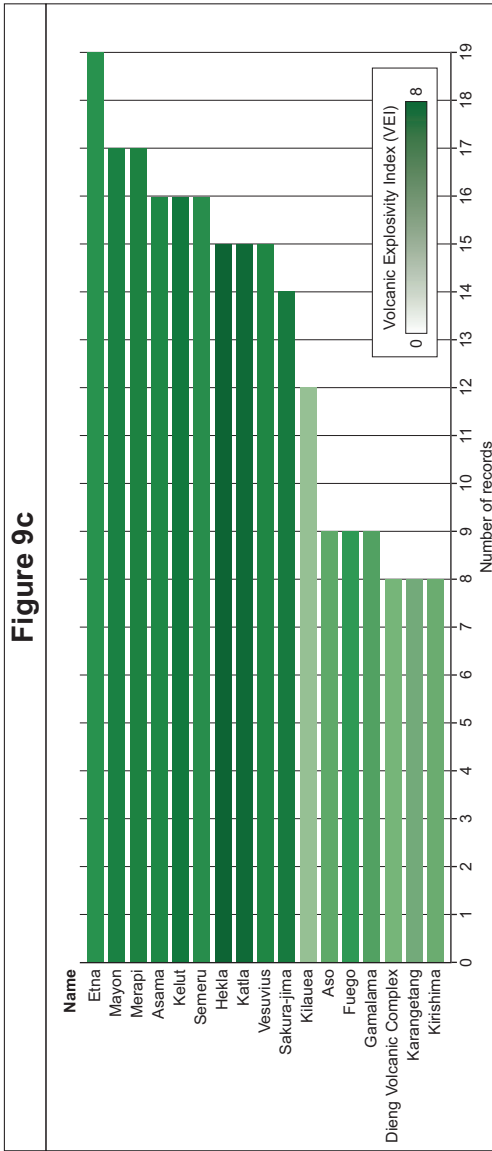
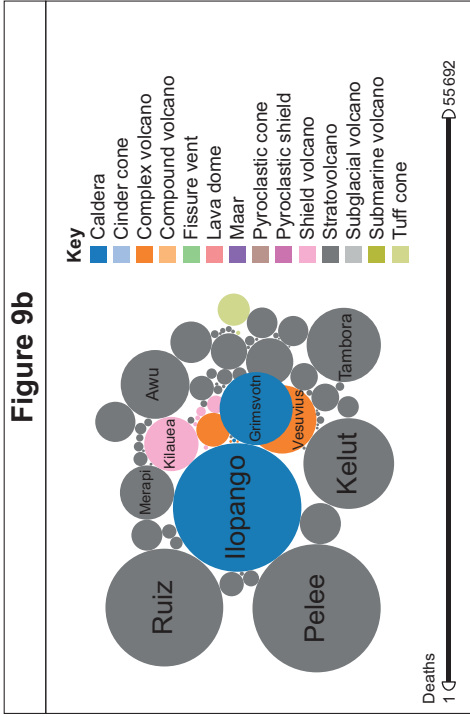
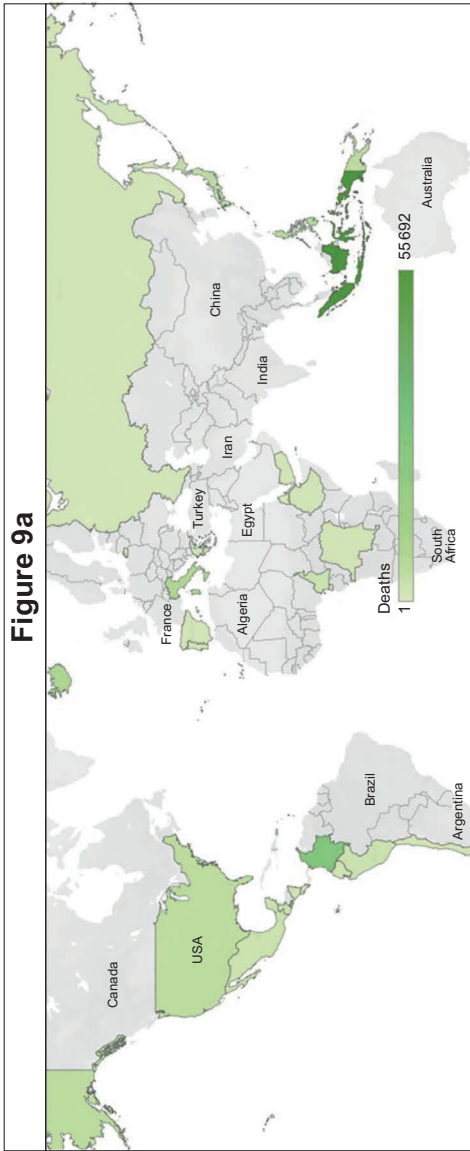


Figure 10

Information about the 2010 earthquake in Haiti

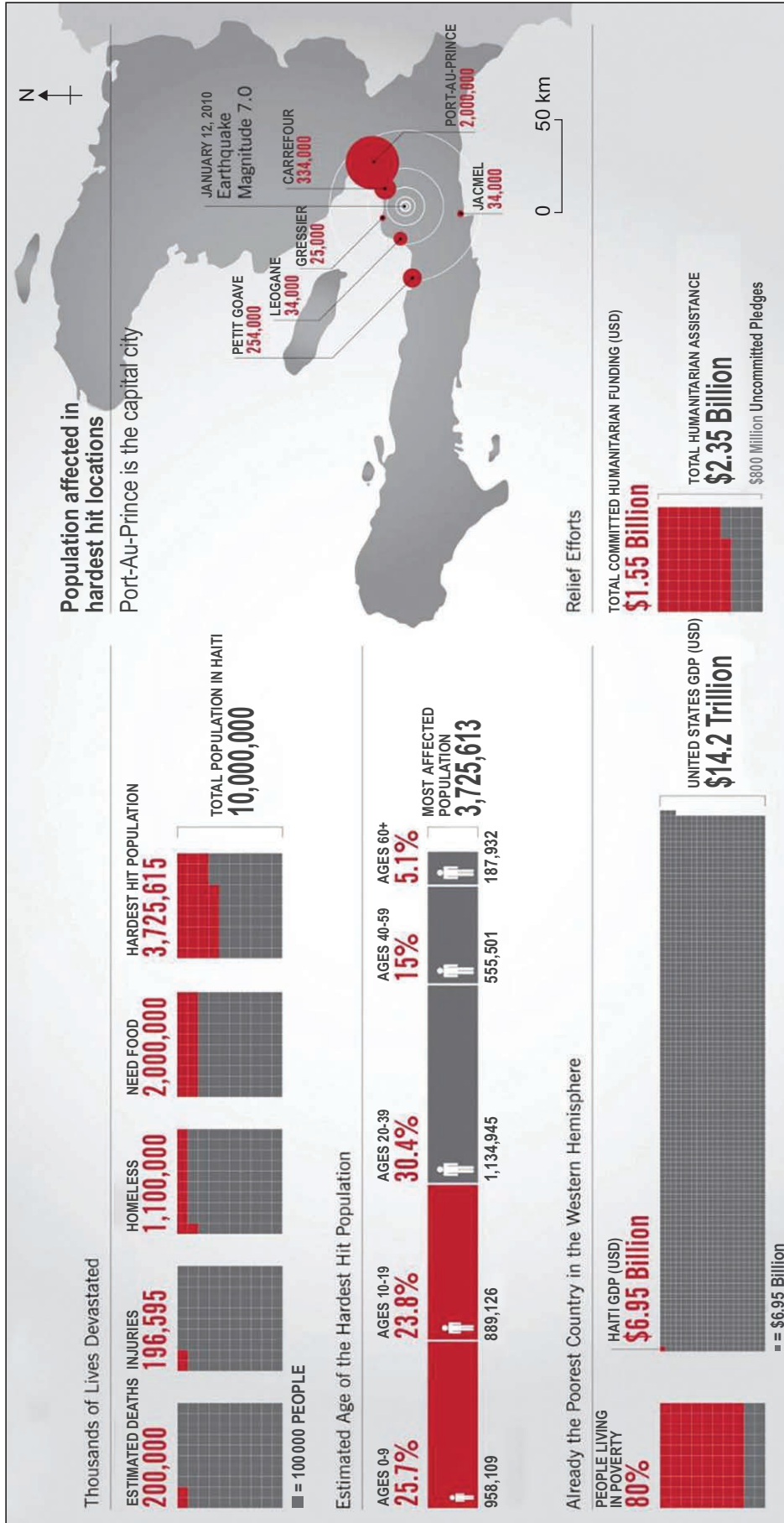




Figure 11

Selected climate extremes and impacts affecting coral and forests in tropical and sub-tropical regions

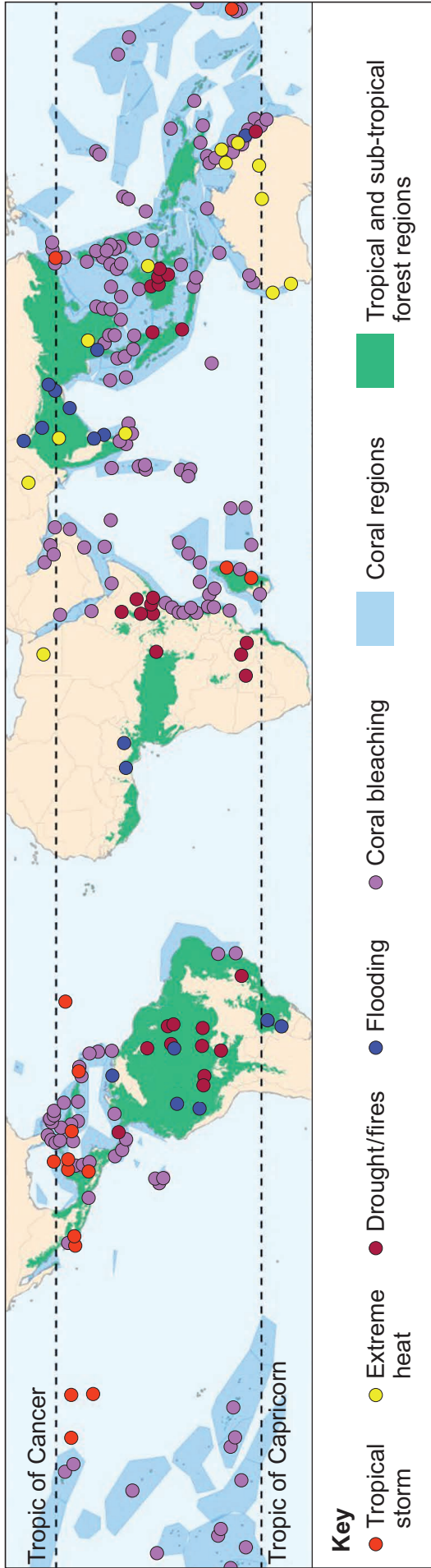
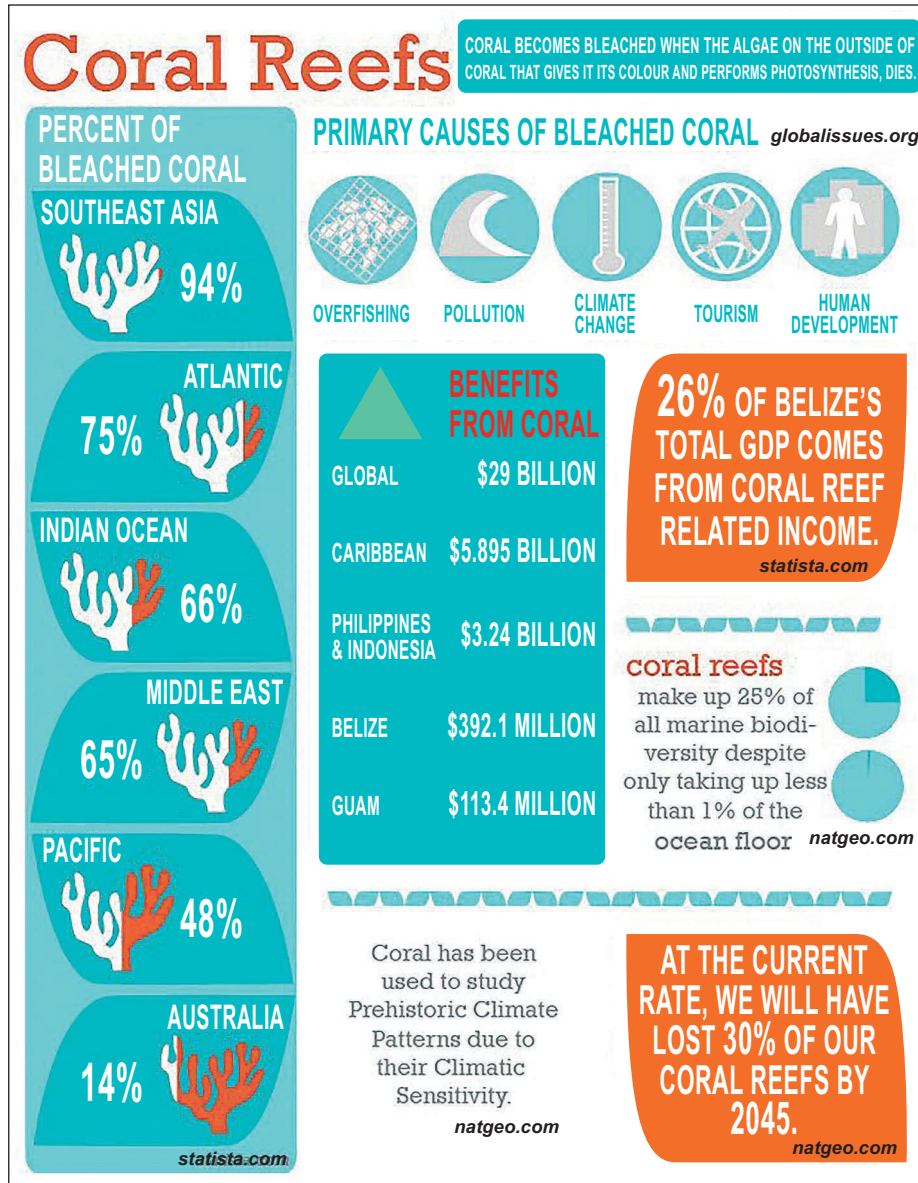


Figure 12

Information about coral reefs



END OF SOURCES

**There are no resources printed on this page**

---

**There are no resources printed on this page**

**Copyright information**

For confidentiality purposes, all acknowledgements of third-party copyright material are published in a separate booklet. This booklet is published after each live examination series and is available for free download from [www.aqa.org.uk](http://www.aqa.org.uk).

Permission to reproduce all copyright material has been applied for. In some cases, efforts to contact copyright-holders may have been unsuccessful and AQA will be happy to rectify any omissions of acknowledgements. If you have any queries please contact the Copyright Team.

Copyright © 2021 AQA and its licensors. All rights reserved.

