

GRAPHIC DESIGN Memphis Design – Nathalie Du Pasquier

Aim: To study the artist's style and technique to help you further explore the use of surface pattern, texture, collage, layout and composition; as well as develop your CAD skills.

Deadline: WEEK 5 homework set on FRIDAY 13/10/17. Due lesson THURSDAY 19/10/17

Task: Produce 2x A4 spread covering the work of NATHALIE DU PASQUIER (see EXAMPLES at end of document).

After your EXPLORING LETTERFORMS HW, please leave two pages blank and then present your Nathalie Du Pasquier homework across the next two pages (see RECAP on next page).



Selection of designs by Nathalie Du Pasquier 1981-1988.

UPDATED 3F1 RECAP OF HOMEWORK SKETCHBOOK 13.10.17

PLAN THE LAYOUT OF YOUR PAGES.
PRESENTATION IS VERY IMPORTANT
AS WELL AS SPACING

Inside cover Write your full name + Godalming College + Student ID number	Page 1 (leave blank) Your 8x patterned strips will go into your classwork sketchbook.
---	---

Page 2 Jasper Johns Make copies of his artwork (minimum of 4 small copies)	Page 3 Jasper Johns Make series of your designs in the style of Jasper Johns
--	--

Page 4 (leave blank)	Page 5 (leave blank)
-----------------------------	-----------------------------

SIDE TAB of written research + images of designer's artwork (+analysis of an artwork)
attach using double sided sticky tape.

WK2 PAUL KLEE HOMEWORK

Page 6 Paul Klee 1x copy (include a palette of colours, textures, patterns)	Page 7 Paul Klee Your designs in his style: 2x small squares; 1x large square. (include a palette of colours, textures, patterns)
--	--

Page 8 (leave blank)	Page 9 (leave blank)
-----------------------------	-----------------------------

WK3 HENRI MATISSE HOMEWORK

Page 10 Matisse 1x copy <small>HENRI MATISSE 31.12.1869-3.11.1954 (Type your research + analysis of one of his papercut out artworks. Print onto tracing paper.</small>	Page 11 Matisse Your designs in his style: 4x paper cutout collage pieces (based on plant observations).
--	--

Palette attach here and here use paper clip or double sided tape to attach.

SIDE TAB of written research + images of designer's artwork (+analysis of an artwork)
attach using double sided sticky tape.

Tracing paper FLAP of written research + analysis of an artwork.
Use double sided sticky tape to attach tracing paper FLAP to the side of page.
The FLAP will lay on top of your Matisse copy.

Page 12 (leave blank)	Page 13 (leave blank)
------------------------------	------------------------------

Page 14 Nathalie Du Pasquier 4x copies <small>Memphis Design & Nathalie Du Pasquier (Type your research + analysis of one of her artworks. Print onto transparent paper (tracing paper or clear acetate).</small>	Page 15 Nathalie Du Pasquier 4x your designs in her style ALL DIGITAL
--	---

Page 16 (leave blank)	Page 17 (leave blank)
------------------------------	------------------------------

Tracing paper FLAP of written research + analysis of an artwork.
Use double sided sticky tape to attach tracing paper FLAP to the side of page.
The FLAP will lay on top of your copies.
Ask technician for help with printing onto tracing paper or acetate.
Ask technician for acetate or tracing paper.

*include annotations, which could either be hand written or typed, printed onto tracing/acetate paper and then attached to page using double sided sticky tape.

1. Nathalie Du Pasquier homework to be presented on pages 14-15 of your A4 homework sketchbook.

Research the Memphis Design movement and the work by artist Nathalie Du Pasquier. Include: written research (300-500 words), include origins of Memphis Design movement, biography about Memphis founding member Nathalie Du Pasquier + analysis of one of her artworks that you are going to do a copy of – *this is to be typed up on computer (either type up on Word, straight into Photoshop or Illustrator. Print onto tracing paper or clear acetate; cut down to appropriate sized strip using the trimmer/guillotine (or cutting knife + cutting mat); attach to side of page 14 as a FLAP using a strip of double sided tape.*

Useful websites to help with research:

<https://designmuseum.org/memphis#memphis-today>

Remember: side flaps should not cover all of your artwork.

2. Page 14 – you are to create 4x copies of Nathalie Du Pasquier’s designs. Here is a [Dropbox link](#)

<https://www.dropbox.com/sh/wfedfjzdz49jpc/AACbmNB4Zx-Ut0Ro3P46tQBia?dl=0> - choose 4 artworks from this selection

The dimensions for each copy is approx. 13cm x 9cm (landscape). For your copies, please follow these instructions:

Copy 1 – monochrome – a neat black fine liner drawing copy on cartridge paper.

Copy 2 – coloured pencils + water colours on pre-prepared paper e.g. tea/coffee stained paper or monoprint paper.

Copy 3 – acrylic paint + mixed media collage on cartridge paper.

Copy 4 – digital copy using Adobe Illustrator – use the pen tool (P), brush tool (B), rectangle tool (M), eclipse tool (L)

Include annotation (hand written or typed and printed onto tracing paper) underneath each copy.

Include annotations (which can either be hand written or typed, printed onto tracing paper/transparent acetate paper and attached using double sided tape). Neat presentation when mounting your work into your sketchbook, please use double sided tape, no PVA glue.

3. Page 15 – you are to create 4x your own digital designs (landscape, dimensions 13cm x 9cm) in the style of Nathalie Du Pasquier.

All 4 of your designs are to be created digitally using Adobe Illustrator. Practise your CAD skills! Create interesting geometric shapes; digital patterns and mark making; varied stroke thickness; copy and paste marks and shapes to create your own patterns; take inspiration from Nathalie’s work! What colour palette will you use?

Websites for inspiration:

- Nathalie Du Pasquier website <http://www.nathaliedupasquier.com/design.html> & <https://theredlist.com/wiki-2-343-918-346-view-pattern-profile-du-pasquier-nathalie.html>
- Pinterest – ‘Memphis Design’ search <https://www.pinterest.co.uk/explore/memphis-design/?lp=true>
- Alecia Nicole – Memphis Inspired Vector Patterns - <https://www.behance.net/gallery/15382179/Memphis-Inspired-Vector-Patterns>
- Benjamin Rawson Memphis inspired primary colour work <https://www.itsnicethat.com/articles/benjamin-rawson-illustrator-310516>

REMINDERS:

Top menu bar > View > Rulers > Show Rulers. Remember to click on rulers and drag to create guidelines to help you with layout and composition.

Top menu bar > View > Show Grid

Make sure your Smart Guides is on: Top menu bar > View > Smart Guides should have a tick next to it. Also show grid, which is quite useful: Top menu bar > View > Show Grid.

Top menu bar > Window > Layers. Use layers to keep your document organised. Double click on ‘Layer...’ to rename it.

To create a new layer, on the layers window, bottom right corner next to the bin symbol, click on the post it note symbol to create a new layer.

Familiarise yourself with the tools panel (tools panel guide provided in this HW brief).

If you hover mouse over each tool, it will reveal the name of tool and shortcut will display in brackets e.g. Selection Tool (V).

At the bottom of the tools panel, remember the double arrow above the FILL and STROKE colour boxes; you can click on the double arrow to swap the FILL and STROKE colours.

Use the pen tool (P), brush tool (B), rectangle tool (M) and eclipse tool (L).

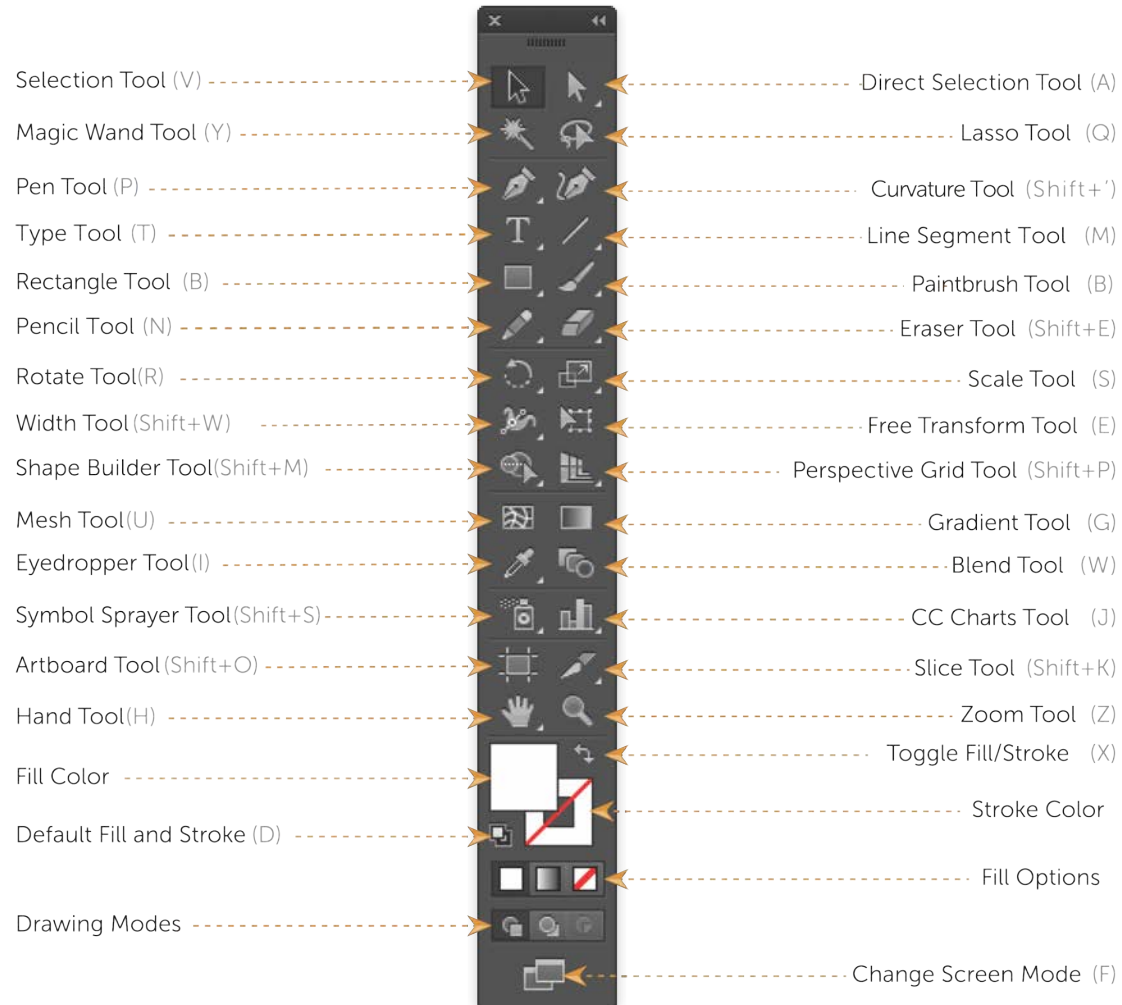
If you want to mask a pattern into an object (e.g. shape), the object must be on top of the pattern. You must select both (only two must be selected: the pattern and one object), right click and select ‘make clipping mask’.

To convert a typed letter/word, select *Type Tool* and type the letter/word. Choose the *Selection Tool* (black arrow at top of tools panel) and click on your letter/word, now right click and select 'create outlines'. The letter/word is now an object, which is grouped. To ungroup, use the Selection Tool to click on object, and then right click and select 'ungroup'.

However, if you want to mask an image (pattern or photograph etc.) into more than one object e.g. three initials – the three objects (initials) need to be grouped > click on grouped objects with Selection Tool > go to Object on top menu bar > Compound Path > Make. Now your initials are ready for an image to be masked into them.

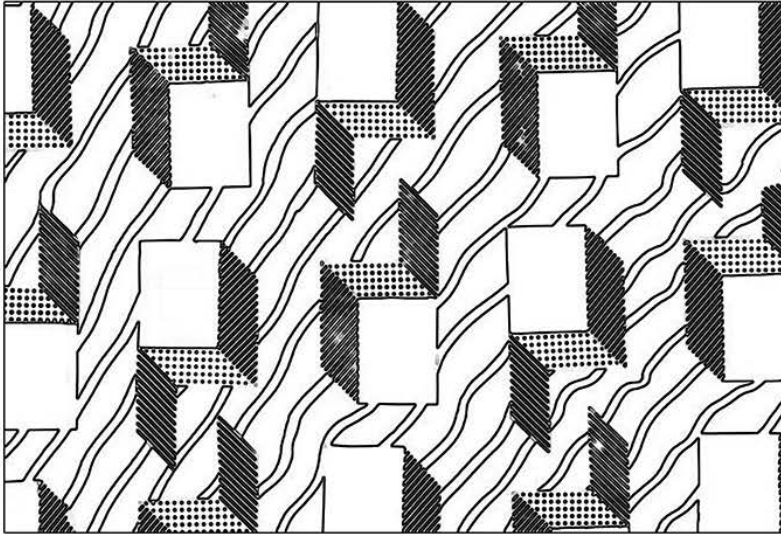
Remember to be organised and gather the materials you need for the homework. You could pre-prepare papers (e.g. acrylic painted surfaces).

TOOLS PANEL GUIDE



Example of page 14, 4x copies

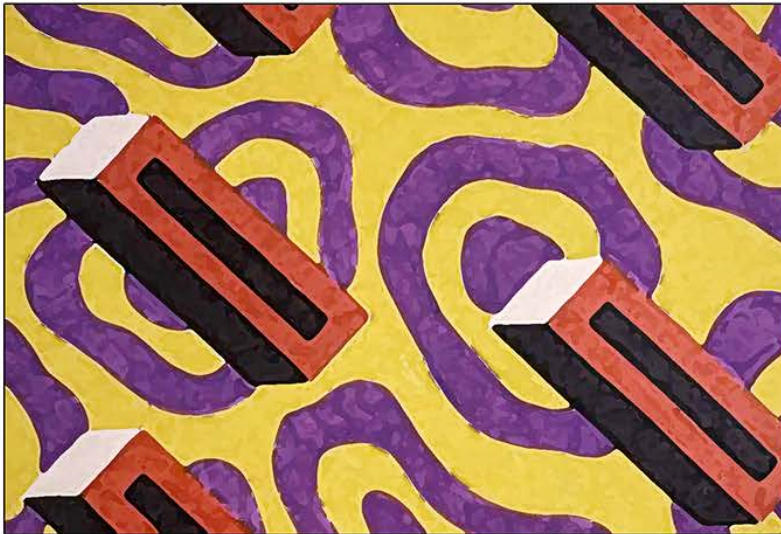
EXAMPLES



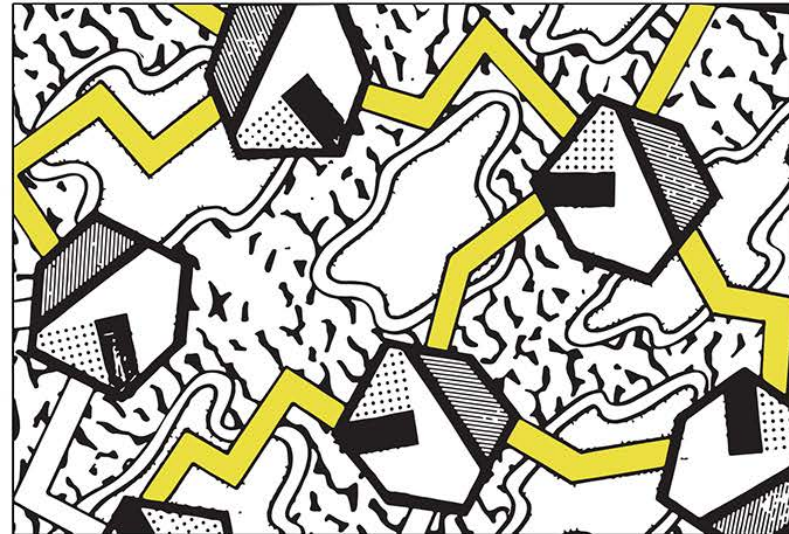
COPY 1



COPY 2



COPY 3



COPY 4

Examples of page 15, 4x your designs

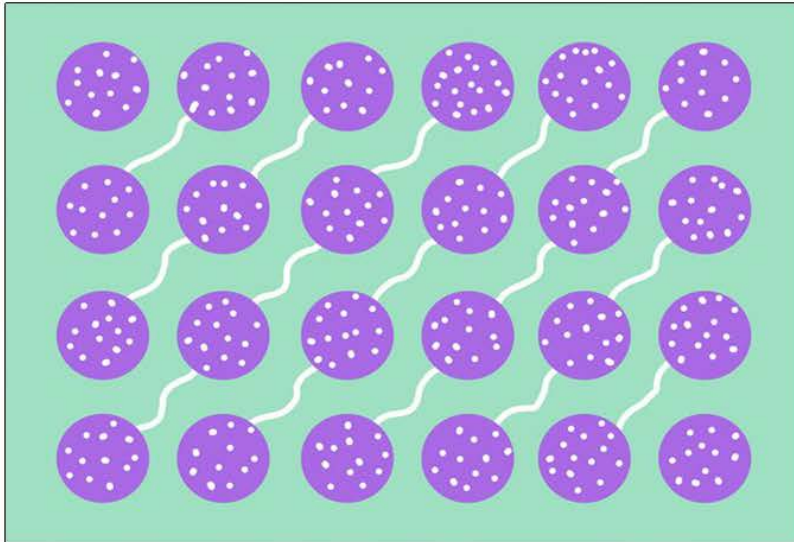
EXAMPLES



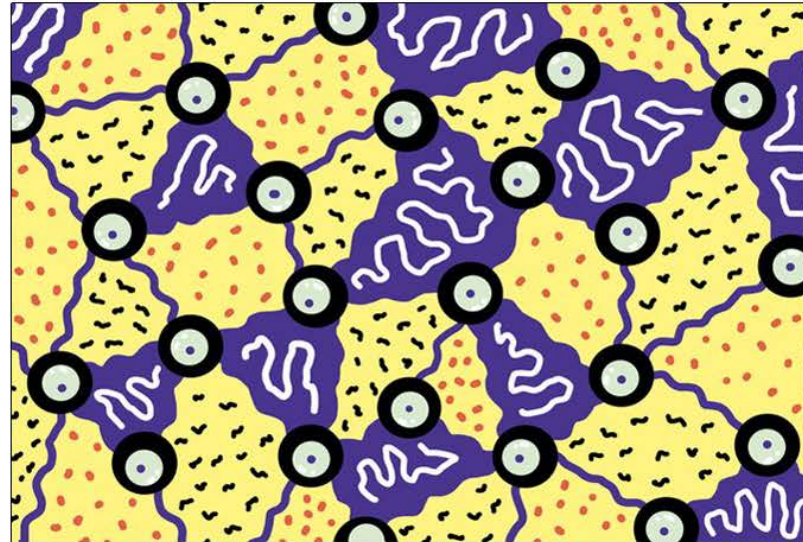
YOUR DESIGN 1



YOUR DESIGN 2



YOUR DESIGN 3



YOUR DESIGN 4