

# GRAPHIC DESIGN

## Stephen Smith | Neasden Control Centre

**Aim:** To study the artist's style and technique to help you further explore the use of surface pattern, mark making and mixed media.

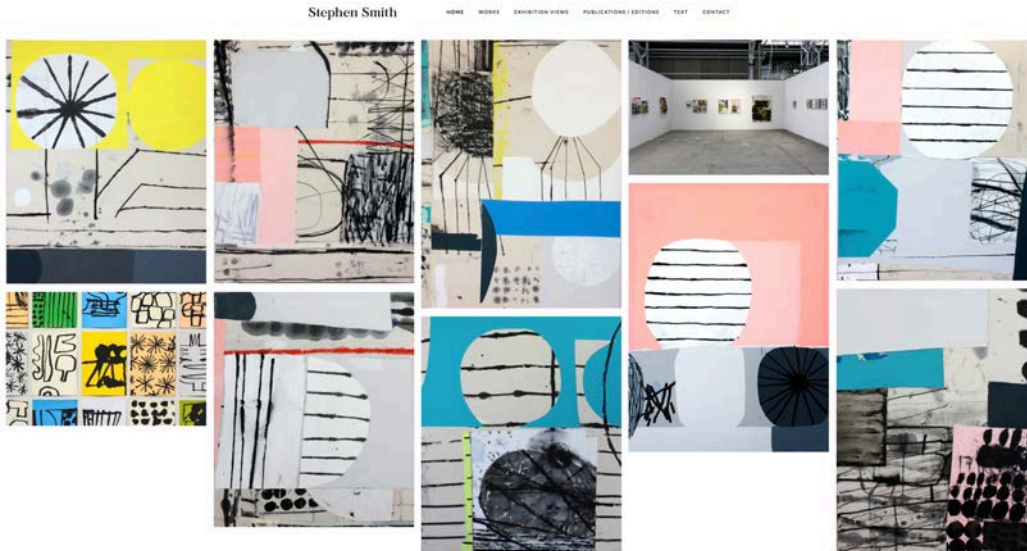
**Deadline:** WEEK 6 HALF TERM homework set on FRIDAY 20/10/17. Due lesson WEDNESDAY 01/11/17

**Task:** Produce 4x A4 spread covering the work of STEPHEN SMITH (Neasden Control Centre).

### Stephen Smith - Visual Artist.

<http://stephen-smith.com/> | <https://www.neasdencontrolcentre.com/about/> |

<https://www.instagram.com/neasdencontrolcentre/> | <https://www.instagram.com/nccstudio/>



**Stephen Smith (Neasden Control Centre) is an illustrator / graphic artist. His work is known for its multi-disciplined process led hand drawn style within graphic compositions.**

Clients commission Stephen on a range of projects including: editorial illustration, illustrated maps, hand drawn lettering & advertising. His output also includes site specific installation for interiors such as hotels, offices & institutions, motion graphics / animation / music videos, surface pattern design & illustrated packaging. He has exhibited his work internationally. Get in touch if you have an idea you would like to discuss further by emailing: [info@neasdencontrolcentre.com](mailto:info@neasdencontrolcentre.com)

**Represented by:**

Snyder New York (USA / Canada)

A-Gent (Japan)

INSIDE COVER

PAGE 1

INSIDE COVER  
WRITE YOUR  
FULL NAME  
+ GODALMING COLLEGE  
+ STUDENT ID NUMBER

LEAVE BLANK

PAGE 2

PAGE 3

WEEK 1 HW  
JASPER JOHNS

WEEK 1 HW  
JASPER JOHNS

PAGE 4

PAGE 5

LEAVE BLANK

LEAVE BLANK

PAGE 6

PAGE 7

WEEK 2 HW  
PAUL KLEE

WEEK 2 HW  
PAUL KLEE

PAGE 8

PAGE 9

LEAVE BLANK

LEAVE BLANK

PAGE 10

PAGE 11

WEEK 3 HW  
HENRI MATISSE

WEEK 3 HW  
HENRI MATISSE

PAGE 12

PAGE 13

LEAVE BLANK

LEAVE BLANK

PAGE 14

PAGE 15

WEEK 4 HW  
EXPLORING LETTERFORMS

WEEK 4 HW  
EXPLORING LETTERFORMS

PAGE 16

PAGE 17

LEAVE BLANK

LEAVE BLANK

PAGE 18

PAGE 19

WEEK 5 HW  
NATHALIE DU PASQUIER

WEEK 5 HW  
NATHALIE DU PASQUIER

PAGE 20

PAGE 21

LEAVE BLANK

WEEK 6 HALF TERM HW  
STEPHEN SMITH SIDE 1

PAGE 22

PAGE 23

WEEK 6 HALF TERM HW  
STEPHEN SMITH SIDE 2

WEEK 6 HALF TERM HW  
STEPHEN SMITH SIDE 3

PAGE 24

PAGE 25

WEEK 6 HALF TERM HW  
STEPHEN SMITH SIDE 4

-

PAGE 26

PAGE 27

-

-

PAGE 28

PAGE 29

-

-

PAGE 30

PAGE 31

-

-

PAGE 32

PAGE 33

-

-

PAGE 34

PAGE 35

-

-

PAGE 36

PAGE 37

-

-

PAGE 38

PAGE 39

-

-

PAGE 40

PAGE 41

-

-

PAGE 42

PAGE 43

-

-

PAGE 44

PAGE 45

-

-

PAGE 46

PAGE 47

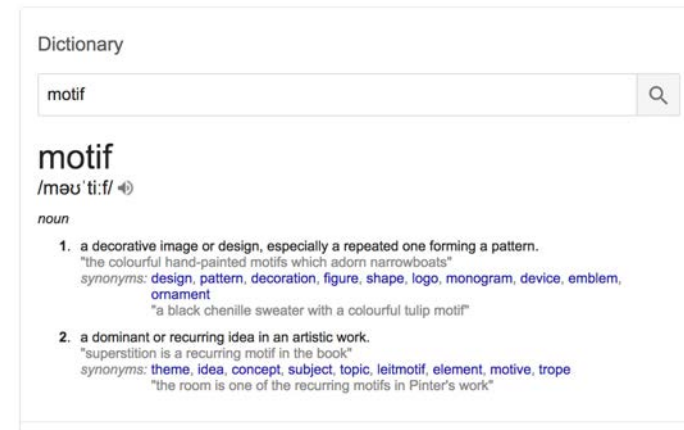
-

-

Stephen Smith homework to go on pages 21, 22, 23 and 24.

Stephen Smith makes work drawn from conspiracy theory, bit-rot, black holes, psycho-geographic post-traumatic landscapes. Stephen works predominately with painting, drawing, print and installation. He uses a process of formal abstraction to deconstruct and reconstruct the form and language of the work. Through this themes, forms and motifs are built up and re-worked over time, with each iteration new works are formed in which the dialogue is in a state of flux.

I recently discovered Stephen Smith's artwork whilst browsing in the shop Heals. His screen-prints are sold in Heals:



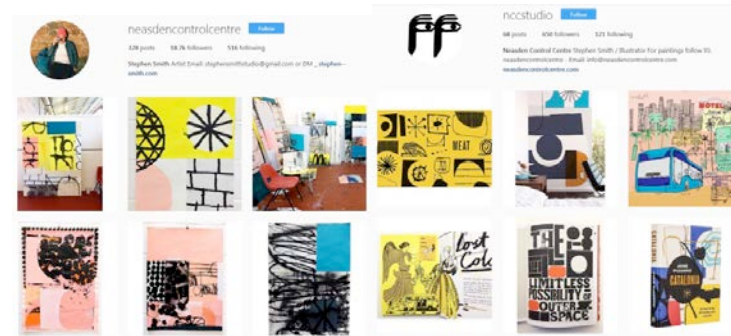
As you can see his work consists of surface pattern, mark making and texture - all relevant to what you have been studying in previous and current cw/hw projects.

**TASK A. SIDE TAB/FLAP - Research work by the artist STEPHEN SMITH**

Create a side tab/flap using cartridge or tracing paper, which will include written research (250 words), biography about Stephen Smith (+ analysis of his artwork) + selection of artworks by Stephen Smith.

**TASK B. Please visit Stephen Smith's Instagram accounts: [@neasdencontrolcentre](#) features his ART; and [@nccstudio](#) features his ILLUSTRATION/DESIGN.**

**You are to create 2x A5 sized copies of his work; select 1 from [@neasdencontrolcentre](#) and 1 from [@nccstudio](#) - you must use a mixed media approach. Think about layering; using various pens, pencils, different thicknesses, different papers (you could collage), pre prepared papers, painted surfaces – be creative in your approach! Present these on side 1 of Stephen Smith HW.**



## WEEK 6 HALF TERM HW STEPHEN SMITH SIDE 1 2X COPIES OF STEPHEN SMITH'S DESIGNS

Colour and/or black and white. Mixed media approach.  
A5 size papers (trim so that they fit neatly in your sketchbook).

For copy no.1, choose a design from his  
Art Instagram ([@neasdencontrolcentre](#))

For copy no.2, choose a design from his  
Illustration/Design Instagram ([@nccstudio](#)).

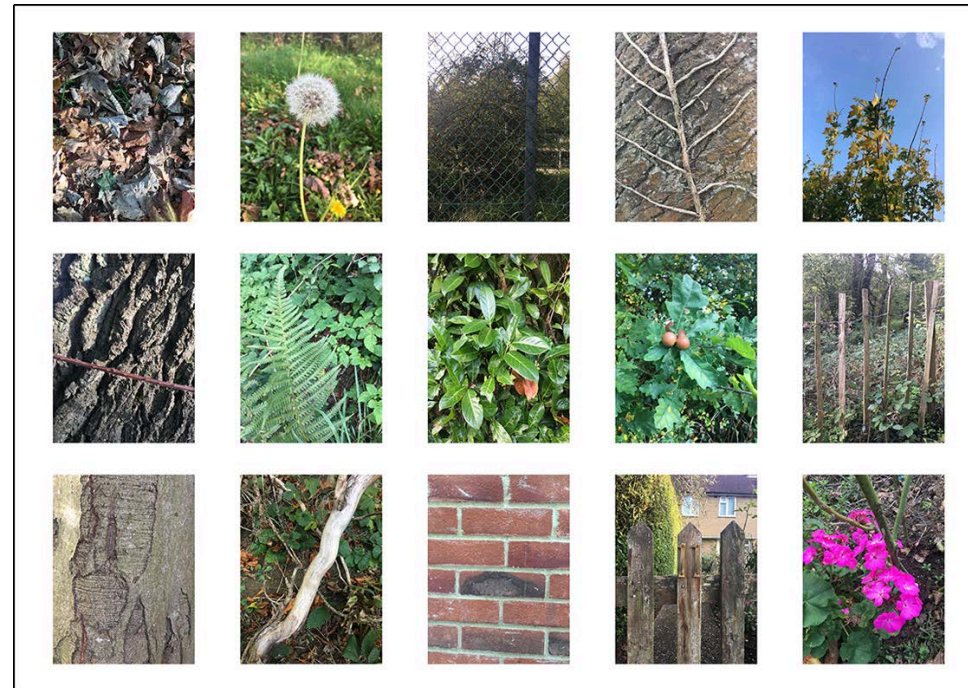
**SIDE TAB/FLAP - Research work by the artist STEPHEN SMITH**  
Create a side tab/flap using cartridge or tracing paper, which will include written research (250 words), biography about Stephen Smith (+ analysis of his artwork) + selection of artworks by Stephen Smith.

Copy no.1

Copy no.2



**TASK C. Reference photos: Journey - go for a walk; use camera or your phone to take 15 photos of your journey; photograph range of interesting textures, surfaces and patterns e.g. my example below shows photos of a walk from Milford station. Annotate below each photo.**



## WEEK 6 HALF TERM HW STEPHEN SMITH SIDE 2

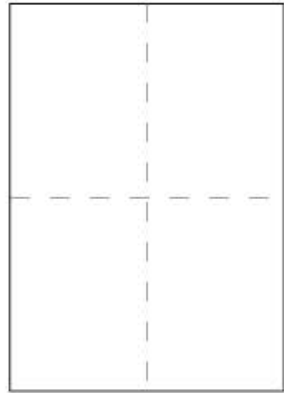
Go on a journey and take photos of a range of interesting textures, surfaces and patterns. Present your 15x reference photos on side 2 (example right).  
Use Adobe Illustrator or Photoshop to present your photos.  
I recommend your photos to be 4.5cm x 6cm so that they neatly fit on the page.



**TASK D. Make 15x small drawings from your photos:**

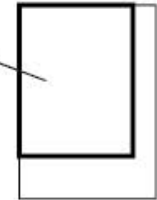
## WEEK 6 HALF TERM HW STEPHEN SMITH SIDE 2 continued

Next, you will need 4x A6 size paper. Cut each A6 piece of paper into rectangles - you will end up with 16 portrait rectangles.



16 portrait rectangles.

Next, trim each rectangle to the dimensions:  
width 4.5cm x height 6cm



On 15 of the portrait rectangles (4.5cm x 6cm), you are to make drawings from your 15 reference photos, in the style of Stephen Smith. Incorporate marks, patterns, motifs, simplified detail, silhouettes, fills, no fills, solid shapes and outlines etc. Use monochrome, earth and neutral colours for these 15 drawings. Use quill/nib and ink; wooden stirrer and ink; black acrylic; graphite; charcoal; pencils and pens of different thickness etc.

Example of Stephen Smith's work (below).



Example of 15 drawings in the style of Stephen Smith (below).



Present your 15 drawings on an A4 piece of transparent paper (tracing paper/clear acetate) that will attach to SIDE 2 of Stephen Smith HW as an A4 flap on top of your 15 photos (please trim your A4 transparency paper so that it fits neatly in your HW sketchbook).

**TASK E. Create IN COLOUR 2x (A5 size) of your own designs in the style of Stephen Smith:**

## WEEK 6 HALF TERM HW

### STEPHEN SMITH SIDE 3

## 2X YOUR OWN DESIGNS IN THE STYLE OF STEPHEN SMITH

Next: Use all of the skills you have acquired and practised so far to create IN COLOUR 2x your own designs in the style of Stephen Smith (A5 size - trim papers to make sure designs fit neatly in sketchbook). Use your 15 drawings to create interesting layouts and compositions, mixed media approach (use collage, ink, paint, pre prepared painted surfaces etc., exploring patterns and motifs created with elements from your 15 drawings. Present these on side 3 of Stephen Smith HW. Annotate page.

Your design no.1

Your design no.2



*TIP: I recommend trimming your A5 size papers (by 0.5mm on all sides) so that they fit neatly in your sketchbook.*



**TASK F: Create IN COLOUR 2x (A5 size) of your own DIGITAL designs in the style of Stephen Smith:**

# WEEK 6 HALF TERM HW

## STEPHEN SMITH SIDE 4

### 2X YOUR OWN DIGITAL DESIGNS IN THE STYLE OF STEPHEN SMITH

Next: you are to create IN COLOUR 2x (A5 size) of your own digital designs in the style of Stephen Smith; using Adobe Illustrator (and/or Photoshop) – use your 2x own designs from side 3, as well as your 15 observational drawings as reference. Annotate page.

Your digital design no.1    Your digital design no.2



PAGE 20

LEAVE BLANK

PAGE 21

WEEK 6 HALF TERM HW  
STEPHEN SMITH SIDE 1

PAGE 22

WEEK 6 HALF TERM HW  
STEPHEN SMITH SIDE 2

PAGE 23

WEEK 6 HALF TERM HW  
STEPHEN SMITH SIDE 3

PAGE 24

WEEK 6 HALF TERM HW  
STEPHEN SMITH SIDE 4

PAGE 25

-

**Deadline: Due lesson WEDNESDAY 01/11/17**