

ND054244764



Write your name here

Surname	Other names
---------	-------------

Pearson Edexcel Centre Number Candidate Number
Level 3 GCE

--	--	--	--	--	--	--	--	--	--

Music
Advanced Subsidiary
Component 3: Appraising

Monday 22 May 2017 – Morning Time: 1 hour 30 minutes	Paper Reference 8MU0/03
----------------------------------------------------------------	-----------------------------------

You must have:
Resource booklet (enclosed)
CD and individual CD player

Total Marks

Instructions

- Use **black** ink or ball-point pen. You may use pencil for rough work on Question 4.
- **Fill in the boxes** at the top of this page with your name, centre number and candidate number.
- Answer **all** questions.
- Answer the questions in the spaces provided
– *there may be more space than you need.*

Information

- The total mark for this paper is 80.
- You may listen to excerpts as many times as you wish.
- The marks for **each** question are shown in brackets
– *use this as a guide as to how much time to spend on each question.*

Advice

- Read each question carefully before you start to answer it.
- Try to answer every question.
- Check your answers if you have time at the end.
- You are reminded of the importance of clear and orderly presentation in your answers.

Turn over ►

P53495A

©2017 Pearson Education Ltd.

1/1/1/1/1/1




Pearson

SECTION A

Answer ALL questions. Write your answers in the spaces provided.

Some questions must be answered with a cross in a box ☒. If you change your mind about an answer, put a line through the box ☒ and then mark your new answer with a cross ☒.

1 Bach: *Ein feste Burg ist unser Gott*, movement I

Listen to Track 1 of the CD and refer to Excerpt 1 in the resource booklet.

(a) Identify the first vocal part to enter.

(1)

- A Alto
- B Bass
- C Soprano
- D Tenor

(b) Describe the vocal melody in bars 1 to 2.

(3)

.....

.....

.....

(c) Identify the melodic interval heard in the Soprano part at:

(1)

(i) bar 8 beat 1 to 2

(1)

(ii) bar 8 beat 2 to 3

(d) Identify the key at bar 11.

(1)

.....

(e) Name the instrument that enters at the start of bar 12.

(1)

.....

DO NOT WRITE IN THIS AREA

DO NOT WRITE IN THIS AREA

DO NOT WRITE IN THIS AREA



(f) Describe the texture from bar 16 beat 3 to the end of the excerpt.

(3)

.....

.....

.....

(Total for Question 1 = 11 marks)

DO NOT WRITE IN THIS AREA

DO NOT WRITE IN THIS AREA

DO NOT WRITE IN THIS AREA



2 Debussy: Estampes No.1 'Pagodes'

Listen to Track 2 of the CD and refer to Excerpt 2 in the resource booklet.

(a) Name the harmonic device heard in the bass in bars 1 to 10. (1)

(b) Identify **two** words or phrases from the list below that describe the melodic line heard in the right hand in bar 4. (2)

- A** Ascending
- B** Chromatic
- C** Minor key
- D** Scalic
- E** Staccato
- F** Three-note motif

(c) Identify a bar between 1 and 10 where the tempo becomes slower. (1)

Bar

(d) State **two** ways in which the right hand melody in bar 11 differs from that in bar 3. (2)

1

2

(e) Name the device heard in bars 15 to 22. (1)

(f) Describe the rhythm and texture heard in bars 23 to 26. (3)



(g) Explain how the influence of Javanese gamelan is heard in this excerpt.

(3)

.....

.....

.....

(Total for Question 2 = 13 marks)

DO NOT WRITE IN THIS AREA

DO NOT WRITE IN THIS AREA

DO NOT WRITE IN THIS AREA



3 Courtney Pine: Back in the Day – ‘Lady Day and (John Coltrane)’

Listen to Track 3 of the CD and refer to Excerpt 3 in the resource booklet.

(a) Name the section from bars 1–4.

(1)

(b) Identify **two** words or phrases from the list below that describe the vocal melody in bars 3 to 4 (2nd time).

(2)

- A** Ascending
- B** Blue note
- C** Major key
- D** Riff
- E** Syllabic
- F** Vocalisation

(c) Name the section which starts at bar 5.

(1)

(d) State **two** ways in which the vocal melody of bars 9 to 11 differs from the vocal melody of bars 5 to 7.

(2)

1

2

(e) (i) Name the instrument that plays between the vocal phrases.

(1)

(ii) Describe the music played by this instrument.

(2)



DO NOT WRITE IN THIS AREA

(f) Identify the bar where the following are found:

(3)

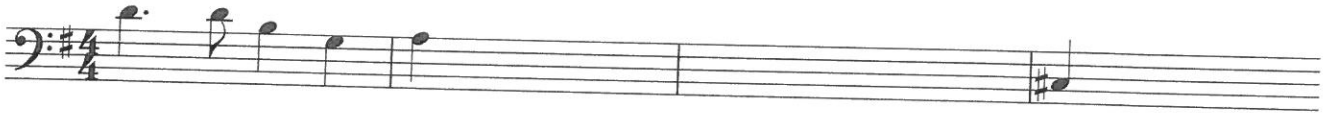
Harmonic feature	Bar number
A subdominant chord / F ⁷ begins for 4 bars	
A bar of chord Gm ⁷	
A bar of chord Fm ⁷	

(Total for Question 3 = 12 marks)

4 Listen to Track 4 of the CD.

(a) Complete the melody in bars 2 to 3.

(6)

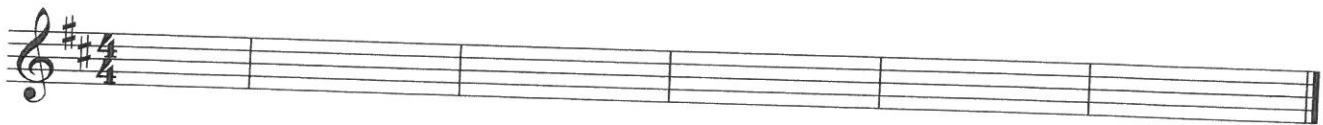


Listen to Track 5 of the CD.

The written music given below contains **three** errors.

(b) Identify the errors by writing a correct version of the melody on the staff below.

(3)



(Total for Question 4 = 9 marks)

TOTAL FOR SECTION A = 45 MARKS



SECTION B

Write your answers in the spaces provided.

5 INSTRUMENTAL MUSIC

Listen to Track 6 of the CD.

Discuss how this piece is characteristic of 19th century chamber music, giving musical reasons for your answer.

Relate your discussion to other relevant works. These may include set works, wider listening or other music.

(15)



DO NOT WRITE IN THIS AREA

DO NOT WRITE IN THIS AREA

DO NOT WRITE IN THIS AREA

Main writing area with horizontal dotted lines.



DO NOT WRITE IN THIS AREA

DO NOT WRITE IN THIS AREA

DO NOT WRITE IN THIS AREA

(Total for Question 5 = 15 marks)



**You must answer either (a) INSTRUMENTAL MUSIC
or (b) MUSIC FOR FILM or (c) NEW DIRECTIONS**

EITHER

6 (a) INSTRUMENTAL MUSIC

Discuss the use of melody and harmony in Vivaldi's Concerto in D minor, Op. 3 No. 11.

Relate your discussion to other relevant works. These may include set works, wider listening or other music.

(20)

OR

6 (b) MUSIC FOR FILM

Discuss the use of melody and rhythm (including metre) in the music you have studied from Danny Elfman's *Batman Returns*.

Relate your discussion to other relevant works. These may include set works, wider listening or other music.

(20)

OR

6 (c) NEW DIRECTIONS

Discuss the use of sonority in Kaija Saariaho's *Petals* for Violoncello and Live Electronics.

Relate your discussion to other relevant works. These may include set works, wider listening or other music.

(20)



DO NOT WRITE IN THIS AREA

Indicate which question you are answering by marking a cross in the box ☒. If you change your mind, put a line through the box ☒ and then indicate your new question with a cross ☒.

If you answer part (a) put a cross in the box .

If you answer part (b) put a cross in the box .

If you answer part (c) put a cross in the box .



DO NOT WRITE IN THIS AREA

DO NOT WRITE IN THIS AREA

DO NOT WRITE IN THIS AREA

Main writing area with horizontal lines.



A large rectangular area with rounded corners, containing numerous horizontal dotted lines for writing. The lines are evenly spaced and extend across most of the page width.



DO NOT WRITE IN THIS AREA

Handwriting practice area with ten horizontal dotted lines.

(Total for Question 6 = 20 marks)

TOTAL FOR SECTION B = 35 MARKS
TOTAL FOR PAPER = 80 MARKS

DO NOT WRITE IN THIS AREA

DO NOT WRITE IN THIS AREA

