

Edexcel

**AS
MUSIC**

Section A (Questions 1 - 4)

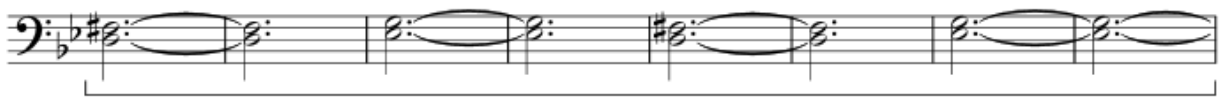
Music for Film: Rachel Portman

Q1 Portman: Mistake of Your Life (excerpt 1)



(a) harmonic interval?

9



(b) timpani rhythm

17



(c) use of tonality

25



(d) identify chords bars 35 - 42

32



(e) compare accompaniment with bars 19 - 22

38



44



(g) identify chord

51



58



64

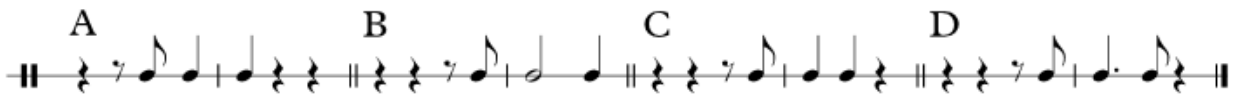


Listen to Portman track 1 and refer to Excerpt 1 (above).

(a) Identify the harmonic interval use in bars 3 and 4. (1)

.....

(b) Which of the following is the correct rhythm played by the timpani in bars 1 – 16? Circle your answer. (1)



(c) (i) Describe the tonality in bars 19 – 26. (1)

.....

(ii) Give one reason for your choice of tonality in bars 19 – 26. (1)

.....

(d) Four different chords are used in bars 35 – 42. Complete the table below to show the four chords in the correct order. Use the following chords in your answer: (2)

chord V (Dm)

chord VI (E flat)

chord VII (F)

chord I (Gm)

bar numbers	chord used
35 and 36	
37 and 38	
39 and 40	
41 and 42	

(e) Compare bars 43 to 46 with bars 19 to 22. The same melody is used in both passages but describe differences in the **accompaniment**. Make two points in your answer. (2)

1

.....

2

.....

(f) Give the bar numbers of a **five** bar phrase in this excerpt. (1)

.....

(g) Describe fully (including inversion) the final chord in this excerpt. (1)

.....

(h) Identify any features of this excerpt that might be considered typical of a minimalist style of composition. (2)

.....

.....

.....

.....

.....

.....

Total for Question Portman 1 = 12 marks

Q2 Portman: Never See Your Children Again (excerpt 2)



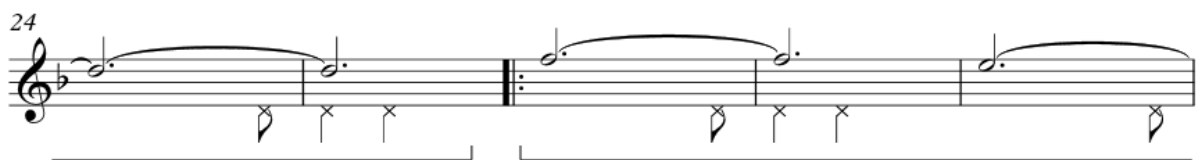
(a) chord patterns and use of harmony in bars 5 - 14



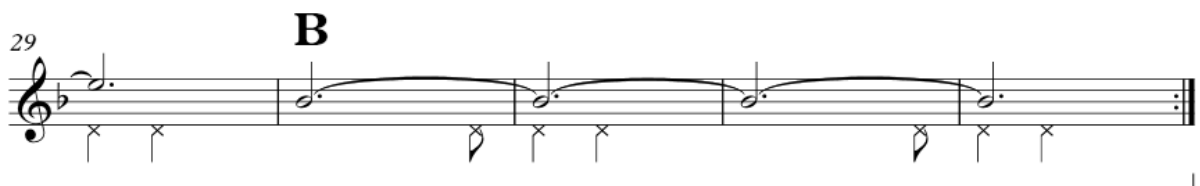
(b) outline of the bass part bars 7 - 11



(d) describe bass line from bar 22 to end



(e) identify features of the harp melody



Listen to Portman track 2 and refer to Excerpt 2 (above).

(a) Identify features of the chord patterns in the **inner** parts and the use of harmony in bars 5 to 14. Make **two** points in each answer.

accompaniment chord patterns – bars 5 to 14, inner parts

1

2 (2)

use of harmony – bars 5 to 14

1

2 (2)

(b) Describe the melodic outline of the bass part in bars 7 to 11. (1)

.....

(c) **In addition to the timpani**, which other percussion instrument is used in this excerpt? (1)

.....

(d) Describe the bass line from bar 22 to the end of the excerpt. (1)

.....

(e) Identify features of the harp melody in bars 26 to 33.

(2)

.....

.....

.....

.....

.....

.....

(f) Identify the chords used in the bars marked A, B and C on the skeleton score.
Complete the table below, choosing your answers from the following options:

(3)

G minor second inversion, plus flat 5

D minor first inversion

B flat root position, plus natural 4

G minor first inversion

D minor root position, plus flat 9

G minor second inversion

location	chord used
A (bar 15)	
B (bar 30)	
C (bar 34)	

Total for Question Portman 2 = 12 marks

Q3 Portman: End Titles (excerpt 3)



(a) features of the accompaniment



(c) identify chord

(c) identify chord



(c) identify chord



(d) rhythmic feature

(e) texture



Listen to Portman track 3 and refer to Excerpt 3 (above).

(a) Describe features of the **accompaniment** in bars 1 to 8.

(3)

.....

.....

.....

.....

.....

.....

(b) Identify features used in the melody line at the locations marked A, B, C and D on the skeleton score.

Complete the table below, choosing your answers from the following options:

(4)

upper auxiliary

lower auxiliary

anticipation

appoggiatura

passing note

disjunct

location	melodic feature
A (bar 6 – second note)	
B (bar 7 – last note)	
C (bar 10 – first note)	
D (bar 12 – last note)	

(c) Identify the chords used in bars 25, 27(+28) and 31. Complete the table below, choosing your answers from the following options: (3)

Em7

A7

G^{sus4}

D9

Am⁺⁴

C9

location	chord
bar 25	
bar 27 + 28	
bar 31	

(d) Examine bars 33 – 34 and bars 35 – 38 and identify a rhythmic feature used in the second passage. (1)

.....

(e) Describe the texture in bars 41 - 46. (1)

.....

Total for Question Portman 3 = 12 marks